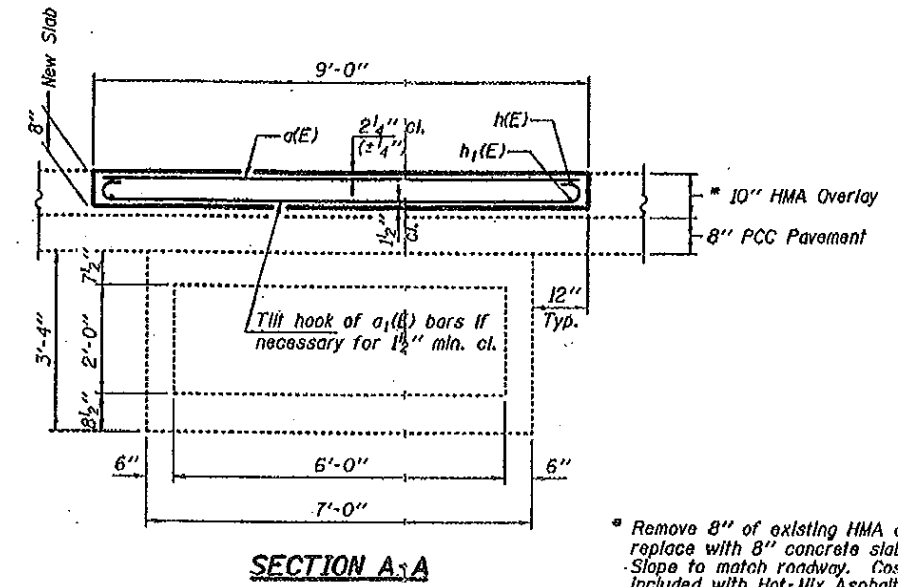
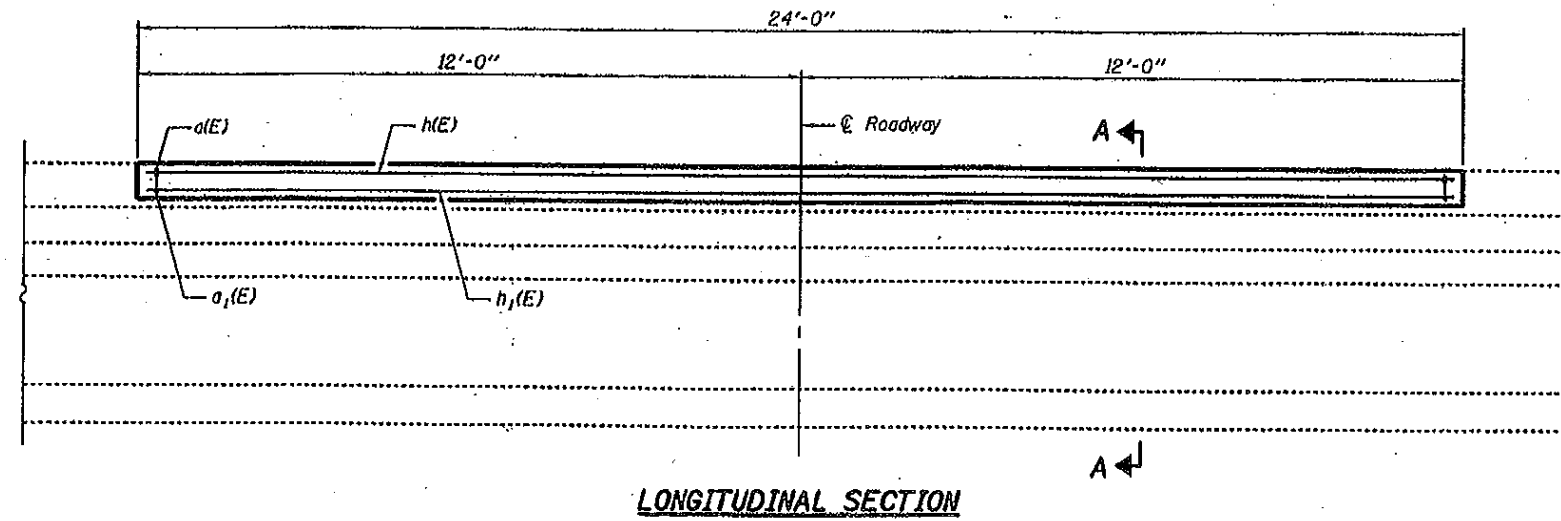
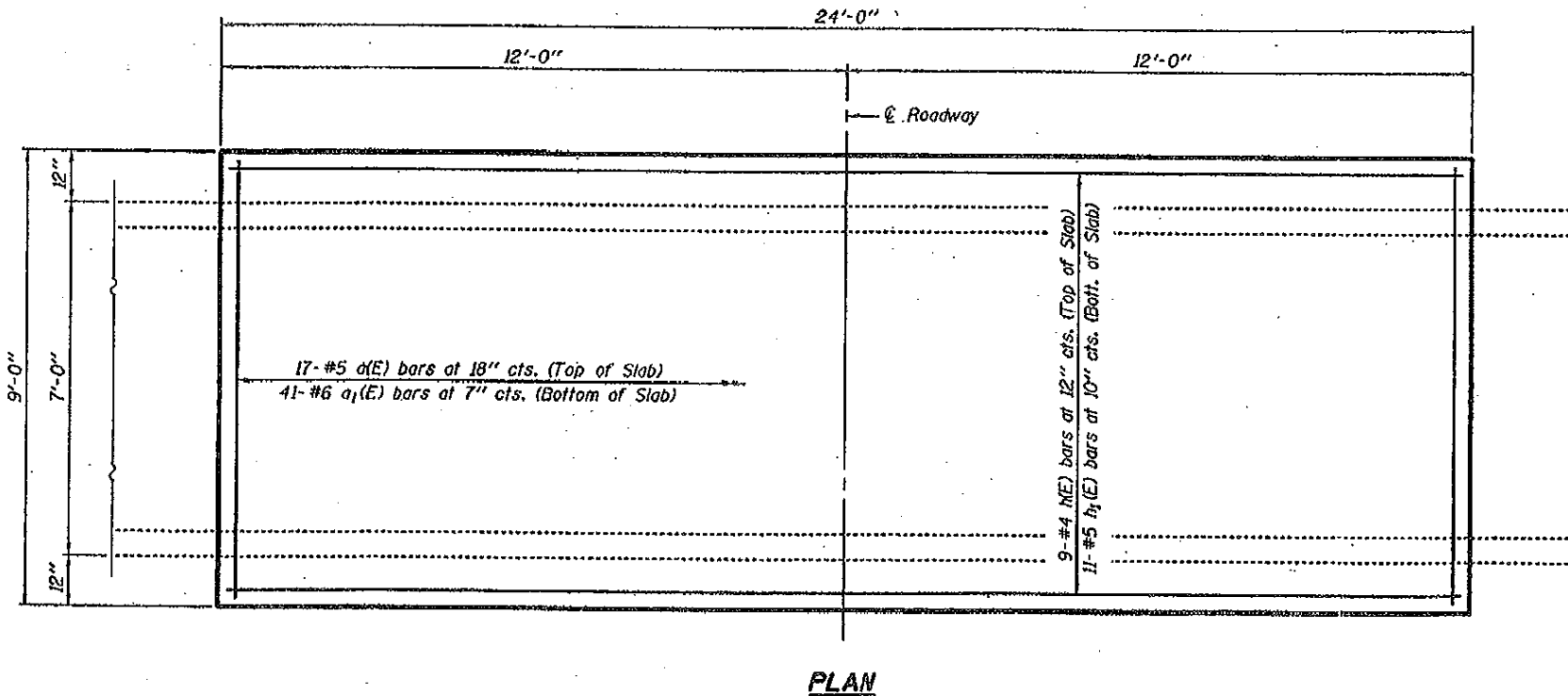


AS-BUILT PLANS – FOR INFORMATION ONLY

DETAIL OF EXISTING CONCRETE SLAB INSTALLED FOR POSTING MITIGATION



* Remove 8" of existing HMA overlay and replace with 8" concrete slab as shown. Slope to match roadway. Cost of removal included with Hot-Mix Asphalt Surface Removal.



GENERAL NOTES

Plan dimensions and details relative to existing plans are subject to nominal construction variations. The Contractor shall field verify existing dimensions and details affecting new construction and make necessary approved adjustments prior to construction or ordering of materials. Such variations shall not be cause for additional compensation for a change in scope of the work, however, the Contractor will be paid for the quantity actually furnished at the unit price bid for the work.

Reinforcement bars shall conform to the requirements of ASTM A 706 Gr 60. See Special Provisions.

Reinforcement bars designated (E) shall be epoxy coated.

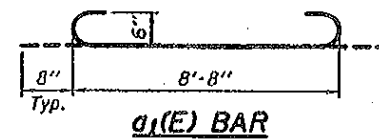
The deck surface shall have its final finish lined according to Article 420.09(a)(1) of the Standard Specifications. Cost included with Concrete Superstructures.

BILL OF MATERIAL

Bar	No.	Size	Length	Shape
a(E)	17	#5	8'-8"	—
a1(E)	41	#6	10'-0"	—
h(E)	9	#4	23'-8"	—
h1(E)	11	#5	23'-8"	—
Hot-Mix Asphalt Surface Removal			Sq. Yds.	24.0
Reinforcement Bars, Epoxy Coated			Pound	1180
Concrete Superstructure			Cu. Yds.	5.4

DESIGN STRESSES

FIELD UNITS
 $f'_c = 3,500$ psi
 $f_y = 60,000$ psi (Relnf.)

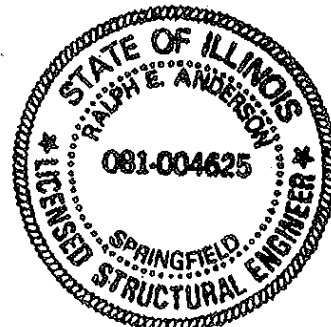


SLAB DETAILS SN 010-8115

SHEET NO.	F.A.S. RTE.	SECTION	COUNTY	TOTAL SHEETS	SHEET NO.
1 SHEETS	1514	-	CHAMPAIGN	-	-
CONTRACT NO.					
FED. ROAD DIST. NO.		ILLINOIS	FED. AID PROJECT		

DESIGNED: *V. H. Voliz*
 CHECKED: *R. M. Babin*
 DRAWN: *Kyle M. Steffen*
 CHECKED: *V. H. Voliz*

EXAMINED: *R. E. Anderson*
 PASSED: *R. E. Anderson*



Expires: November 30, 2010

FILE NAME =	USER NAME = blackrt	DESIGNED -	REVISED -
cs:\pwwork\pwwork\BLACKRT\d0132092\0570701-sht-Details.dgn		DRAWN -	REVISED -
PLOT SCALE = 40.0000' / IN.		CHECKED -	REVISED -
PLOT DATE = 3/30/2010		DATE -	REVISED -

**STATE OF ILLINOIS
DEPARTMENT OF TRANSPORTATION**

DETAIL OF EXISTING CONCRETE SLAB

SCALE: SHEET NO. 1 OF 3 SHEETS STA. TO STA.

F.A.S. RTE.	SECTION	COUNTY	TOTAL SHEETS	SHEET NO.
1514	4CR	CHAMPAIGN	29	19
CONTRACT NO. 70701				
ILLINOIS		FED. AID PROJECT		