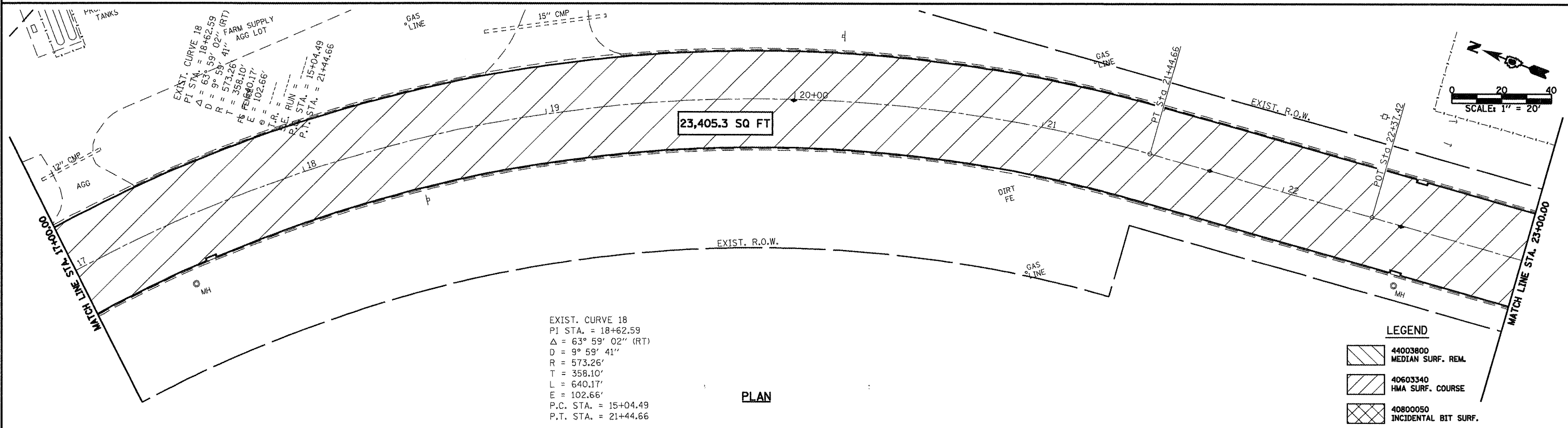


PLAN

LEGEND

- 44003800
MEDIAN SURF. REM.
- 40603340
HMA SURF. COURSE
- 40800050
INCIDENTAL BIT SURF.



PLAN

LEGEND

- 44003800
MEDIAN SURF. REM.
- 40603340
HMA SURF. COURSE
- 40800050
INCIDENTAL BIT SURF.

EXIST. CURVE 18
 PI STA. = 18+62.59
 $\Delta = 63^\circ 59' 02''$ (RT)
 D = $9^\circ 59' 41''$
 R = 573.26'
 T = 358.10'
 L = 640.17'
 E = 102.66'
 P.C. STA. = 15+04.49
 P.T. STA. = 21+44.66

FILE NAME =	USER NAME = laughl1nrv1	DESIGNED -	REVISED -	Allen Henderson & Associates, Inc. Civil and Structural Engineers Springfield, IL 62708 Phone: (217)544-8033 IL Design Firm No. 184-001907	PAVEMENT REMOVAL PLAN			F.A.P. RTE. =	SECTION	COUNTY	TOTAL SHEETS	SHEET NO.
	PLOT SCALE = 1/4" = 20'	DRAWN -	REVISED -		SCALE: 1" = 20'	SHEET NO. 13 OF 32 SHEETS	STA. 11+00.00 TO STA. 23+00.00	320	(242)RS-4, Nj 11GRS-5	LOGAN	32	13
	PLOT DATE = Mar-18-2018 02:16:50PM	CHECKED -	REVISED -					CONTRACT NO. 72998				
		DATE -	REVISED -					FED. ROAD DIST. NO. ILLINOIS FED. AID PROJECT				

c:\pwwork\p\1007\LAUGHLIN\181122\0672998\sh-t-plan-removal.dgn