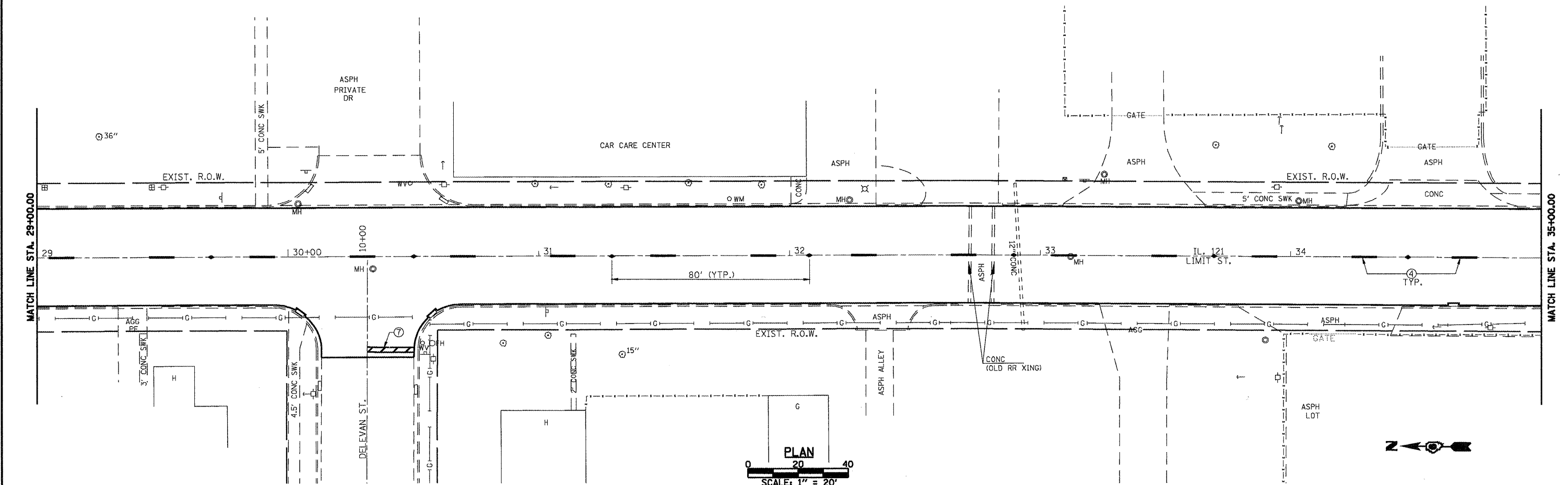
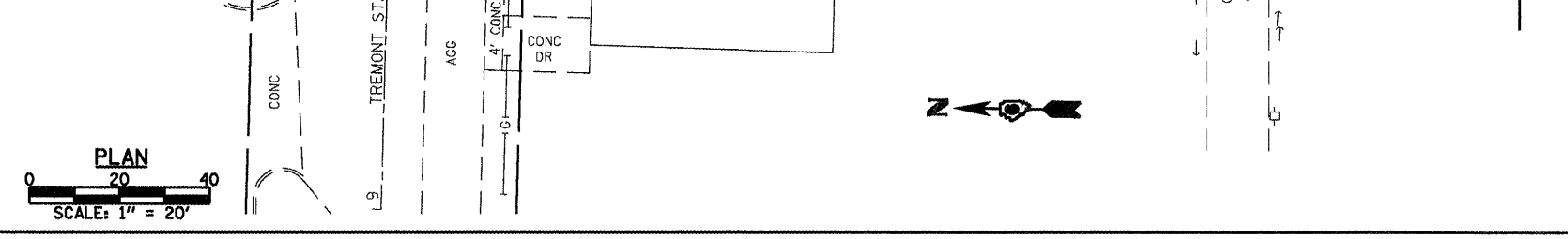


PREFORMED PLASTIC PAVEMENT MARKING LEGEND		RAISED REFLECTIVE PAVEMENT MARKER LEGEND
① THERMOPLASTIC PAVEMENT MARKING, - LINE 5" (SOLID WHITE)	⑥ THERMOPLASTIC PAVEMENT MARKING, - LINE 12" (SOLID YELLOW)	— YELLOW STRIPE
② THERMOPLASTIC PAVEMENT MARKING, - LINE 5" (SOLID YELLOW)	⑦ PREFORMED PLASTIC PAVEMENT MARKING, - TYPE B INLAID LINE 24" (SOLID WHITE)	— WHITE STRIPE
③ PREFORMED PLASTIC PAVEMENT MARKING, - TYPE B INLAID LINE 5" (10' DASH, 30' SKIP, WHITE)	⑧ PREFORMED PLASTIC PAVEMENT MARKING, - TYPE B INLAID LETTERS AND SYMBOLS (WHITE)	◀ ONE-WAY AMBER MARKER
④ PREFORMED PLASTIC PAVEMENT MARKING, - TYPE B INLAID LINE 5" (10' DASH, 30' SKIP, YELLOW)	⑨ THERMOPLASTIC PAVEMENT MARKING, - LINE 12" (SOLID WHITE)	◀ ONE-WAY CRYSTAL/OPAQUE MARKER
⑤ THERMOPLASTIC PAVEMENT MARKING, - LINE 6" (SOLID WHITE)	⑩ PREFORMED PLASTIC PAVEMENT MARKING TYPE B INLAID LINE - 6" (2' DASH 6' SKIP) (WHITE)	◀ TWO-WAY AMBER MARKER



FILE NAME =	USER NAME = laughlinr1	DESIGNED -	REVISED -	Allen Henderson & Associates, Inc. Civil and Structural Engineers Springfield, IL 62703 Phone: (217)544-8033 IL Design Firm No. 184-001907	STRIPING AND PAVEMENT MARKER PLAN		F.A.P. RTE.	SECTION	COUNTY	TOTAL SHEETS	SHEET NO.	
PLOT SCALE = 48,0000' / IN.	DRAWN -	REVISED -	320				(24Z)RS-4, N; 116RS-5	LOGAN	32	25		
PLOT DATE = Mar-16-2018 02:17:23PM	CHECKED -	REVISED -	REVISED -		SCALE: 1" = 20'		SHEET NO. 25 OF 32 SHEETS		STA. 23+00.00 TO STA. 35+00.00		CONTRACT NO. 72998	
	DATE -	REVISED -	REVISED -				FED. ROAD DIST. NO.		ILLINOIS FED. AID PROJECT			

c:\pwwork\pwwork\laughlinr1\d0181122\d672998-sht-plan.dgn