

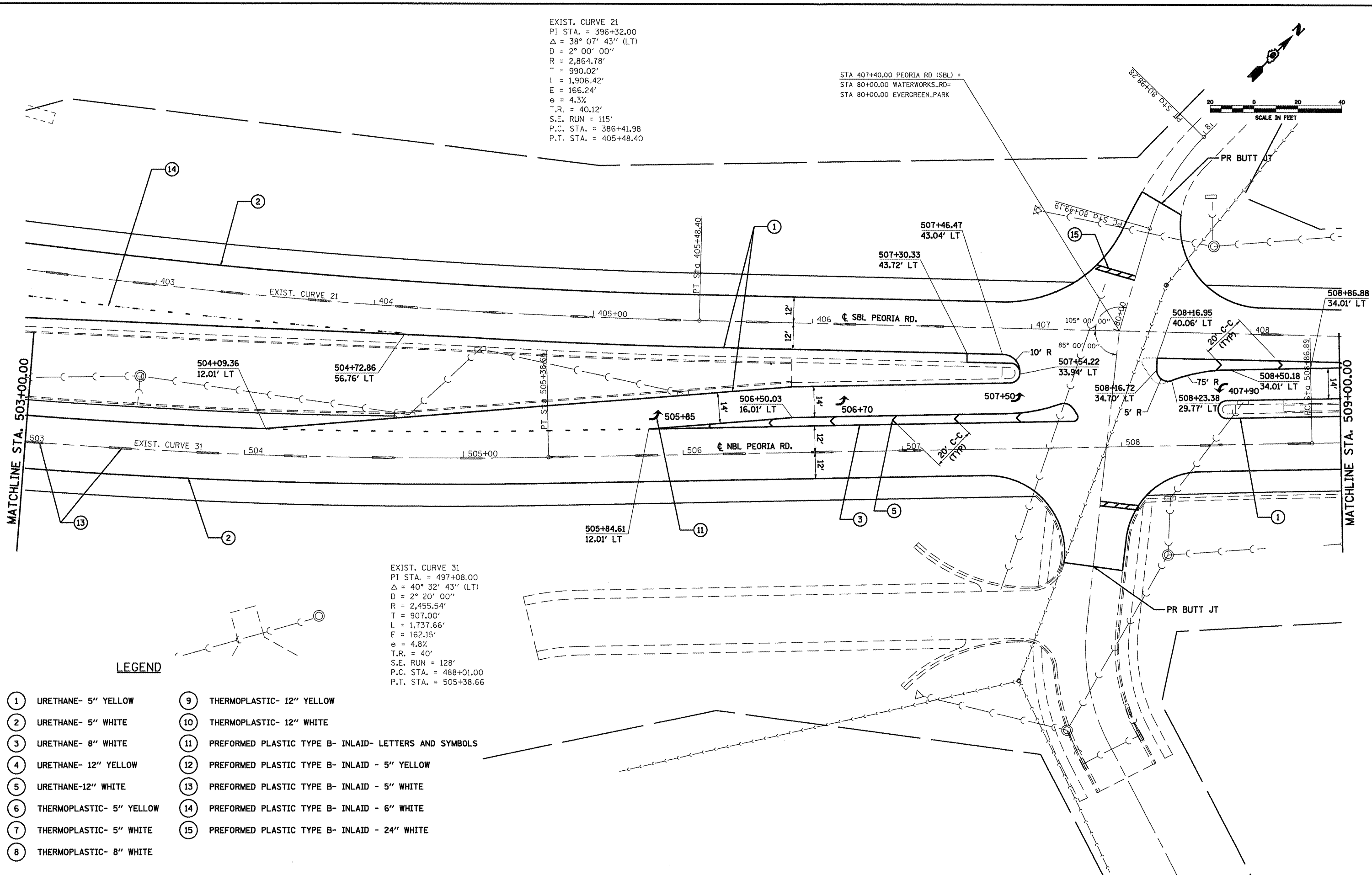
EXIST. CURVE 21
 PI STA. = 396+32.00
 $\Delta = 38^\circ 07' 43''$ (LT)
 $D = 2^\circ 00' 00''$
 $R = 2,864.78'$
 $T = 990.02'$
 $L = 1,906.42'$
 $E = 166.24'$
 $e = 4.3\%$
 $T.R. = 40.12'$
 $S.E. RUN = 115'$
 $P.C. STA. = 386+41.98$
 $P.T. STA. = 405+48.40$

STA 407+40.00 PEORIA RD (SBL) =
 STA 80+00.00 WATERWORKS RD =
 STA 80+00.00 EVERGREEN PARK

EXIST. CURVE 31
 PI STA. = 497+08.00
 $\Delta = 40^\circ 32' 43''$ (LT)
 $D = 2^\circ 20' 00''$
 $R = 2,455.54'$
 $T = 907.00'$
 $L = 1,737.66'$
 $E = 162.15'$
 $e = 4.8\%$
 $T.R. = 40'$
 $S.E. RUN = 128'$
 $P.C. STA. = 488+01.00$
 $P.T. STA. = 505+38.66$

LEGEND

- | | |
|----------------------------|---|
| ① URETHANE- 5" YELLOW | ⑨ THERMOPLASTIC- 12" YELLOW |
| ② URETHANE- 5" WHITE | ⑩ THERMOPLASTIC- 12" WHITE |
| ③ URETHANE- 8" WHITE | ⑪ PREFORMED PLASTIC TYPE B- INLAID- LETTERS AND SYMBOLS |
| ④ URETHANE- 12" YELLOW | ⑫ PREFORMED PLASTIC TYPE B- INLAID - 5" YELLOW |
| ⑤ URETHANE-12" WHITE | ⑬ PREFORMED PLASTIC TYPE B- INLAID - 5" WHITE |
| ⑥ THERMOPLASTIC- 5" YELLOW | ⑭ PREFORMED PLASTIC TYPE B- INLAID - 6" WHITE |
| ⑦ THERMOPLASTIC- 5" WHITE | ⑮ PREFORMED PLASTIC TYPE B- INLAID - 24" WHITE |
| ⑧ THERMOPLASTIC- 8" WHITE | |



**STATE OF ILLINOIS
 DEPARTMENT OF TRANSPORTATION**

PLAN SHEET - SECTION "C" (PEORIA RD.)

FILE NAME =	USER NAME = laughlinr1	DESIGNED -	REVISED -	F.A.P. RTE. SECTION COUNTY TOTAL SHEETS SHEET NO. 658 SANGAMON 206 116 CONTRACT NO. 72C35 ILLINOIS FED. AID PROJECT
er\pwwork\PMIDOT\LAUGHLINR1\dms47710\672C35-SHT-plan-peoriardb1.dgn	DRAWN -	REVISED -	SCALE: SHEET NO. 12 OF 13 SHEETS STA. TO STA.	
PLOT SCALE = 40.0000' / IN.	CHECKED -	REVISED -		
PLOT DATE = Apr-30-2010 02:35:00PM	DATE -	REVISED -		

• 1-1(RS,TS-1127RS-6179Z&102RS-4