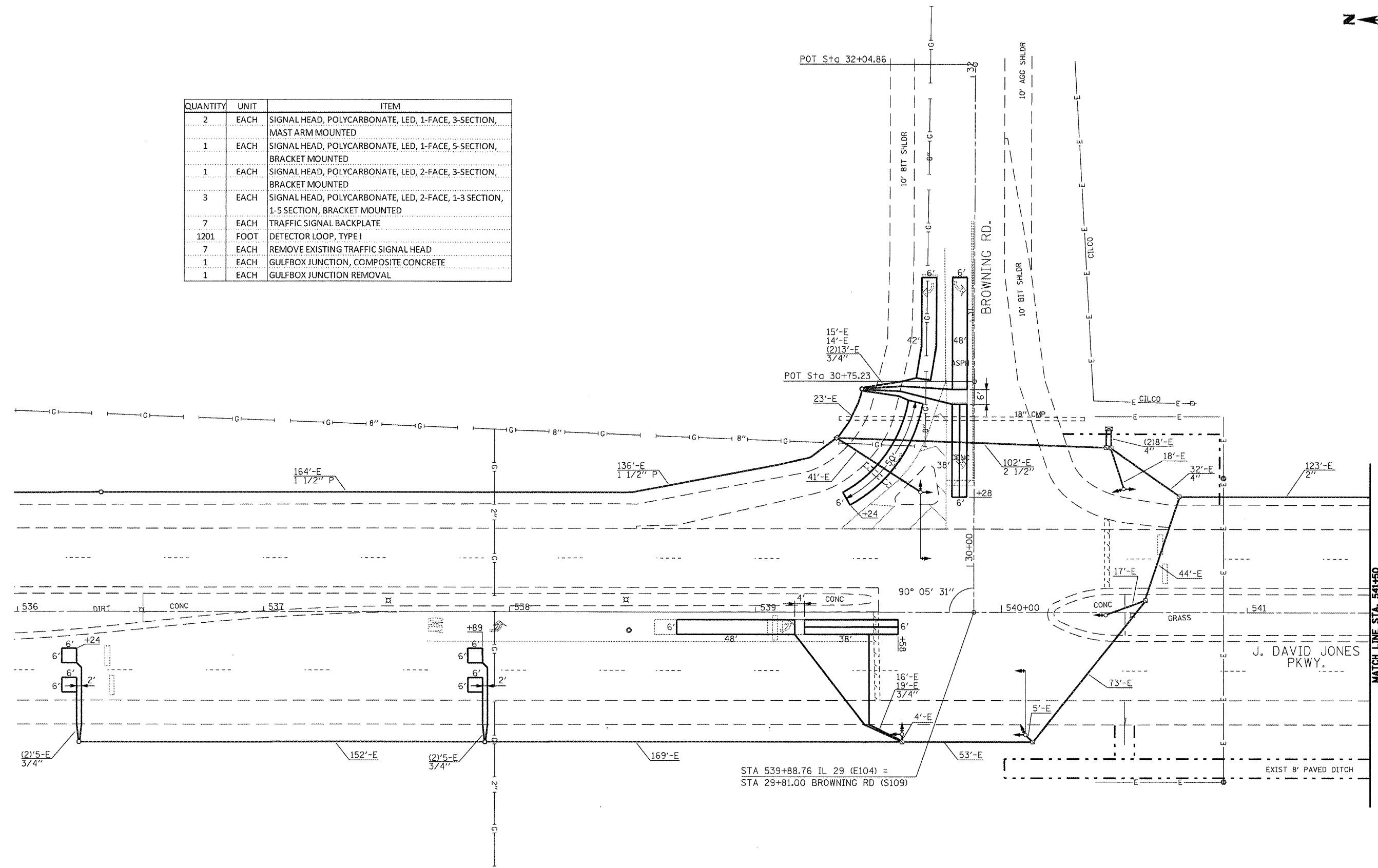




QUANTITY	UNIT	ITEM
2	EACH	SIGNAL HEAD, POLYCARBONATE, LED, 1-FACE, 3-SECTION, MAST ARM MOUNTED
1	EACH	SIGNAL HEAD, POLYCARBONATE, LED, 1-FACE, 5-SECTION, BRACKET MOUNTED
1	EACH	SIGNAL HEAD, POLYCARBONATE, LED, 2-FACE, 3-SECTION, BRACKET MOUNTED
3	EACH	SIGNAL HEAD, POLYCARBONATE, LED, 2-FACE, 1-3 SECTION, 1-5 SECTION, BRACKET MOUNTED
7	EACH	TRAFFIC SIGNAL BACKPLATE
1201	FOOT	DETECTOR LOOP, TYPE I
7	EACH	REMOVE EXISTING TRAFFIC SIGNAL HEAD
1	EACH	GULFBOX JUNCTION, COMPOSITE CONCRETE
1	EACH	GULFBOX JUNCTION REMOVAL



STA 539+88.76 IL 29 (E104) =  
STA 29+81.00 BROWNING RD (S109)

FILE NAME =	USER NAME = laughlinr1	DESIGNED -	REVISED -	<b>STATE OF ILLINOIS DEPARTMENT OF TRANSPORTATION</b>	<b>PROPOSED PLAN IL 29 (J. DAVID JONES PKWY.) &amp; BROWNING RD.</b>	F.A.P. RTE.	SECTION	COUNTY	TOTAL SHEETS	SHEET NO.
ca:\pwork\PMIDOT\LAUGHLINRL\d0203326\672C35.sht.tz_26.dgn	PLOT SCALE = 40.0000' / IN.	DRAWN -	REVISED -			* 1-1(RS,TS-1), 27RS-6, 102RS-4	SANGAMON	206	192	
PLOT DATE = Apr-29-2010 03:00:39PM	DATE -	CHECKED -	REVISED -			* FAP 656 (IL 29), FAP 662 (IL 4)	CONTRACT NO. 72C35			
						* FAP 658 (IL 29)	ILLINOIS FED. AID PROJECT			

SCALE: SHEET NO. 22 OF 33 SHEETS STA. TO STA.