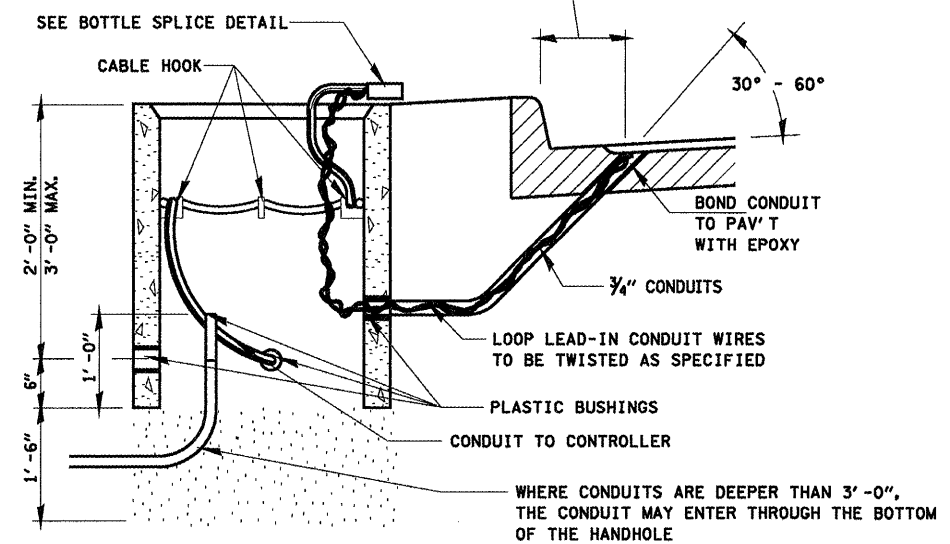
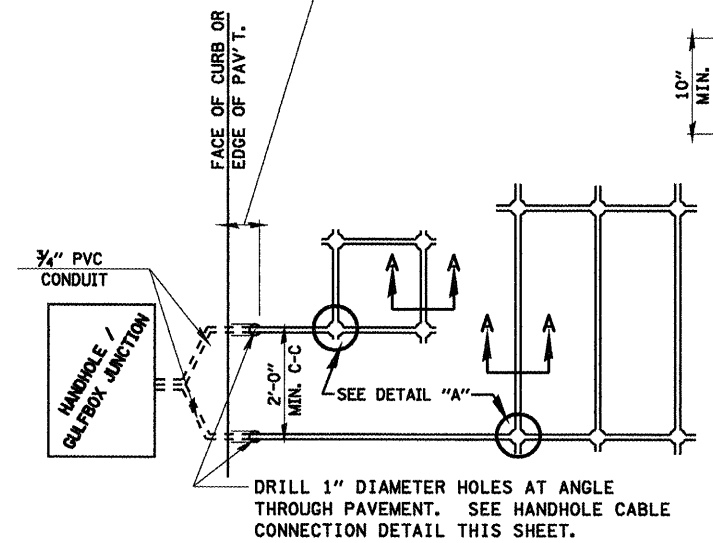


LENGTH OF SLACK FOR LOOP LEAD-INS SHALL PROVIDE FOR MAKING THE SPLICE ON TOP OF THE HANDHOLE AND ONE COMPLETE LOOP OF THE INTERIOR OF THE HANDHOLE, THE SPLICE SHALL BE SUPPORTED BY A CABLE HOOK.

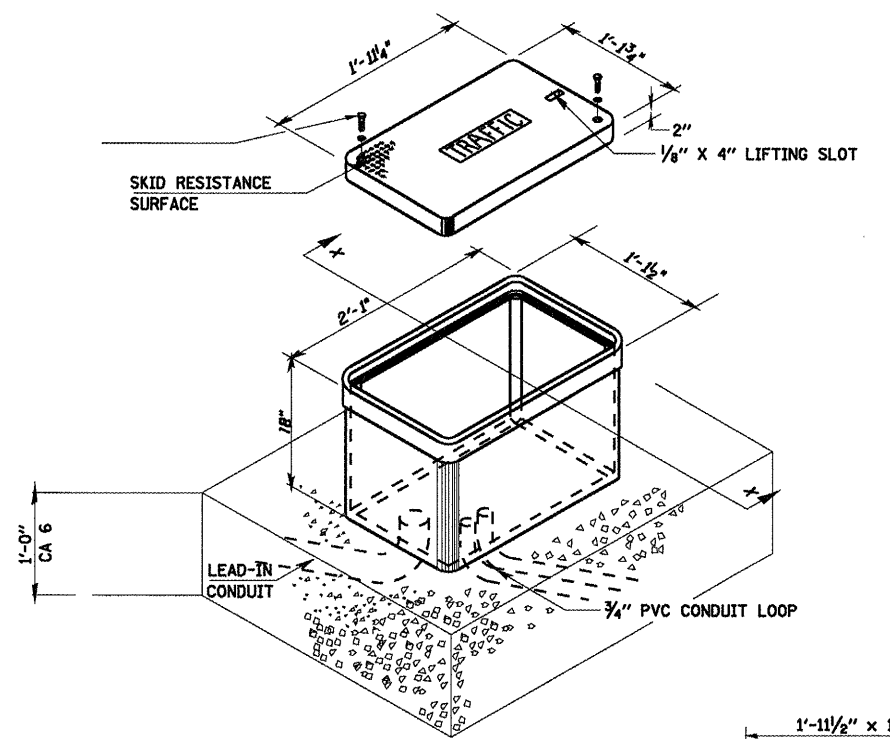
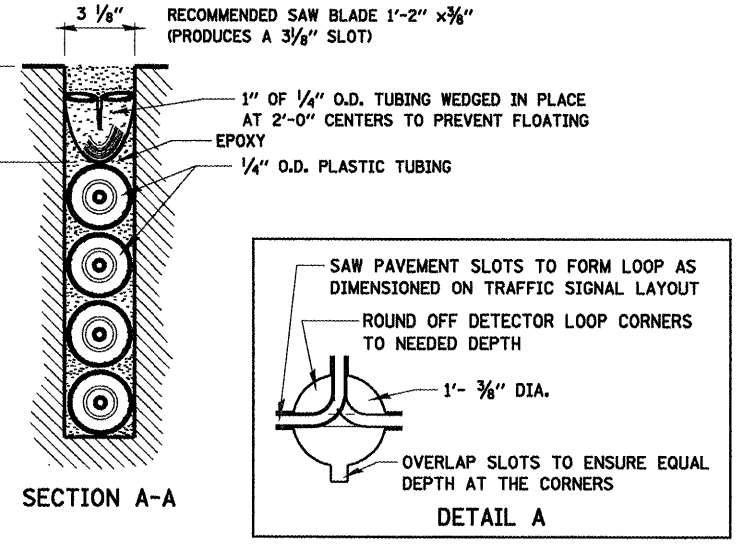
THE LOOP LEAD-IN CONDUIT HOLES SHALL BE PLACED AS CLOSE TO THE CURB AS POSSIBLE TO PERMIT SAW OVERLAP WITHOUT SCARRING FACE OF CURB. IN NON-CURB LOCATIONS THE DISTANCE SHALL NOT BE LESS THAN 6".



**HANDHOLE CABLE CONNECTIONS**

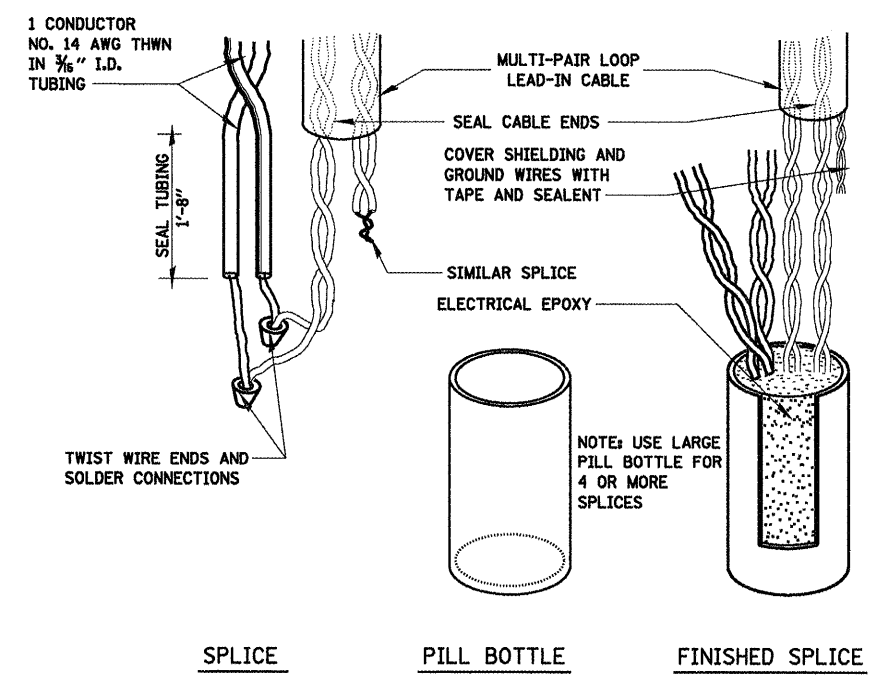
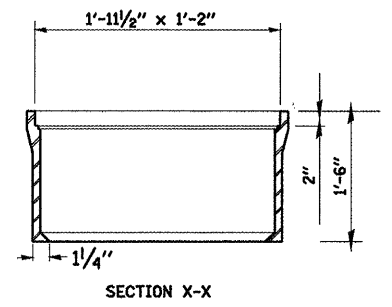


**PAVEMENT SAWING DETAIL FOR TUBE ENCASED DETECTOR LOOP WIRE**



MINIMUM DIMENSIONS

**GULFBOX JUNCTION**



**BOTTLE SPLICE DETAIL**

FILE NAME =	USER NAME = laughlinr1	DESIGNED -	REVISED -	<b>STATE OF ILLINOIS DEPARTMENT OF TRANSPORTATION</b>	<b>TRAFFIC SIGNAL DETECTOR LOOP DETAILS</b>	F.A.P. RTE.	SECTION	COUNTY	TOTAL SHEETS	SHEET NO.
es:\pwwork\pwwidot\LAUGHLINRL\d0223326	672C35_sht.ts_36.dgn	DRAWN -	REVISED -			* 1-(RS,TS-1), 27RS-6, 102RS-4	SANGAMON	206	202	
	PLOT SCALE = 48,000/1 / IN.	CHECKED -	REVISED -			* FAP 658 (IL-55), FAP 662 (IL 4)			CONTRACT NO. 72C35	
	PLOT DATE = Apr-29-2010 03:01:17PM	DATE -	REVISED -			* FAP 658 (IL 29)			ILLINOIS FED. AID PROJECT	
					SCALE:	SHEET NO. 32 OF 33 SHEETS		STA.	TO STA.	