

PROPOSED HOT-MIX ASPHALT
SURFACE REMOVAL, 2"
PROPOSED HOT-MIX ASPHALT
SURFACE COURSE, MIX "D",
N70, 2" DEPTH

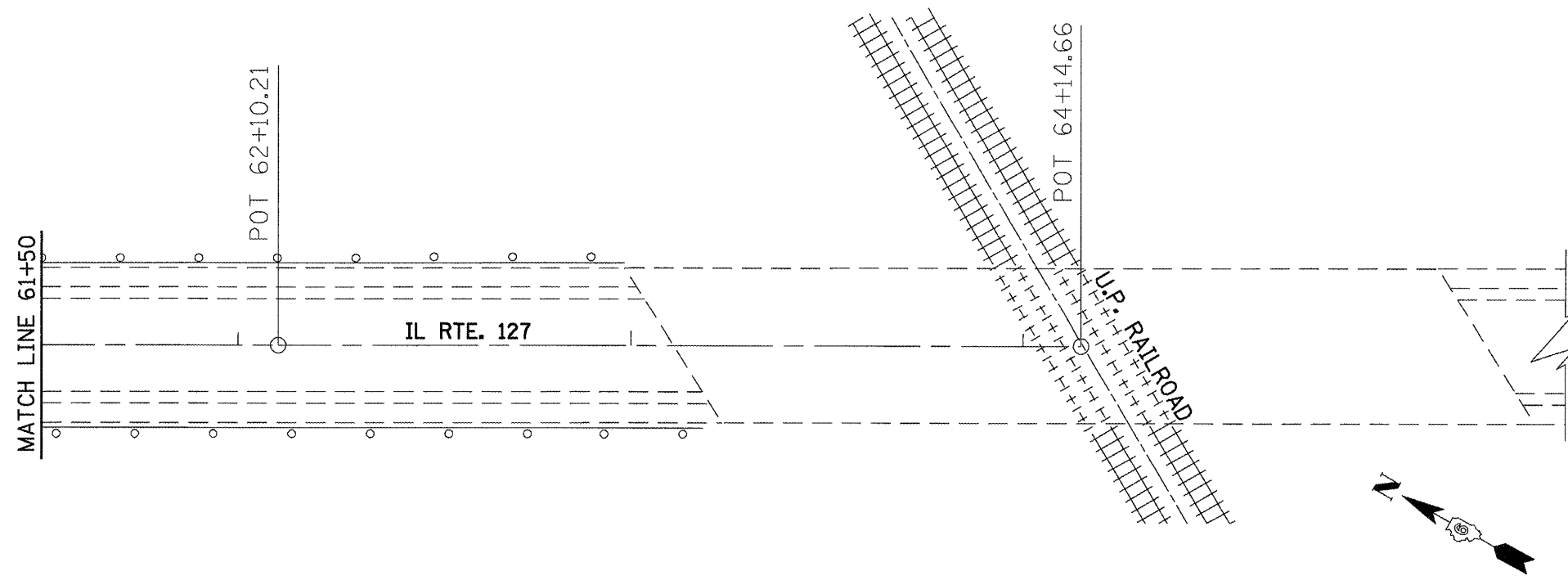
PROPOSED HOT-MIX ASPHALT
SURFACE REMOVAL, 2"
PROPOSED INCIDENTAL HOT-MIX
ASPHALT SURFACING, 2" DEPTH

PROPOSED AGGREGATE
SHOULDER WEDGE, TYPE B

IL RTE. 127

60+00

END OF PROJECT
IL RTE. 127
STA. 58+08.91



•-20RS-7, 21RS-6, 104RS, 105RS-4
•-325, 24

FILE NAME =	USER NAME = laughlrv1	DESIGNED - RTS	REVISED -
c:\pwork\pwork\DOT\LAUGHLIN\LD0105356\0672C52-shv-plan.dgn		DRAWN - RTS	REVISED -
	PLT SCALE = 40,0000 ' / IN.	CHECKED - RTS	REVISED -
	PLT DATE = Mar-26-2010 11:59:59AM	DATE - 3-10-10	REVISED -

**STATE OF ILLINOIS
DEPARTMENT OF TRANSPORTATION**

PLAN SHEET			
SCALE:	SHEET NO. 15 OF 15 SHEETS	STA.	TO STA.

F.A.P. RTE.	SECTION	COUNTY	TOTAL SHEETS	SHEET NO.
••	•	MONTGOMERY	60	36
CONTRACT NO. 72C52			ILLINOIS FED. AID PROJECT	