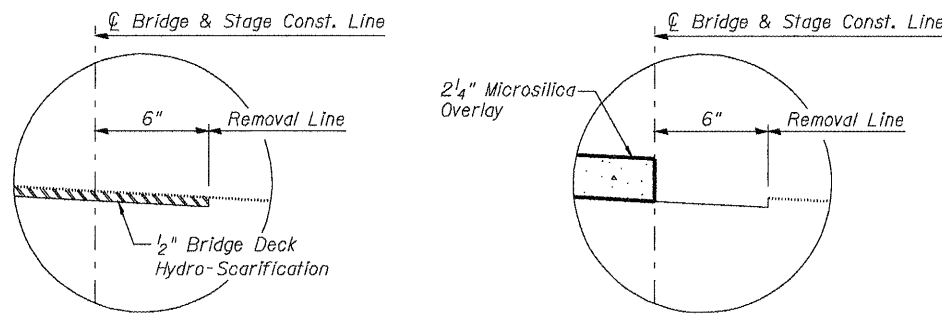
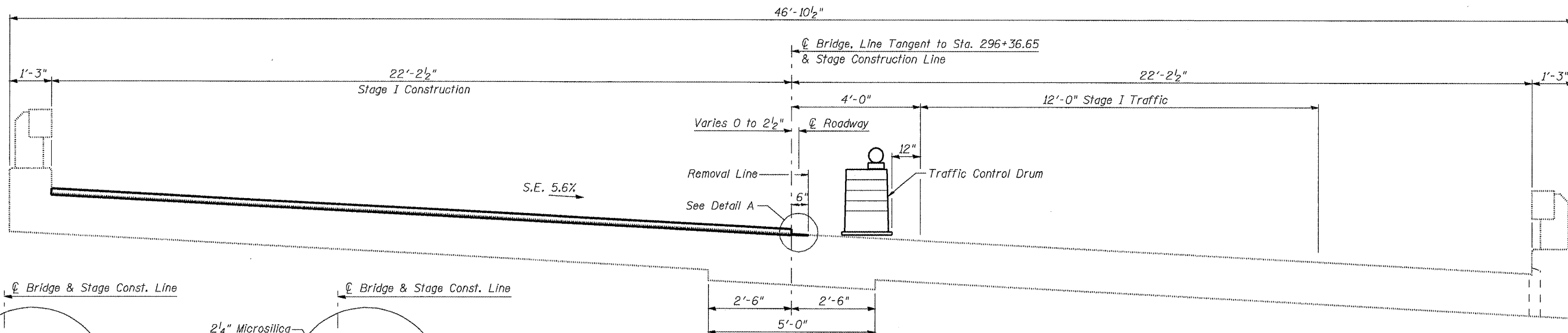


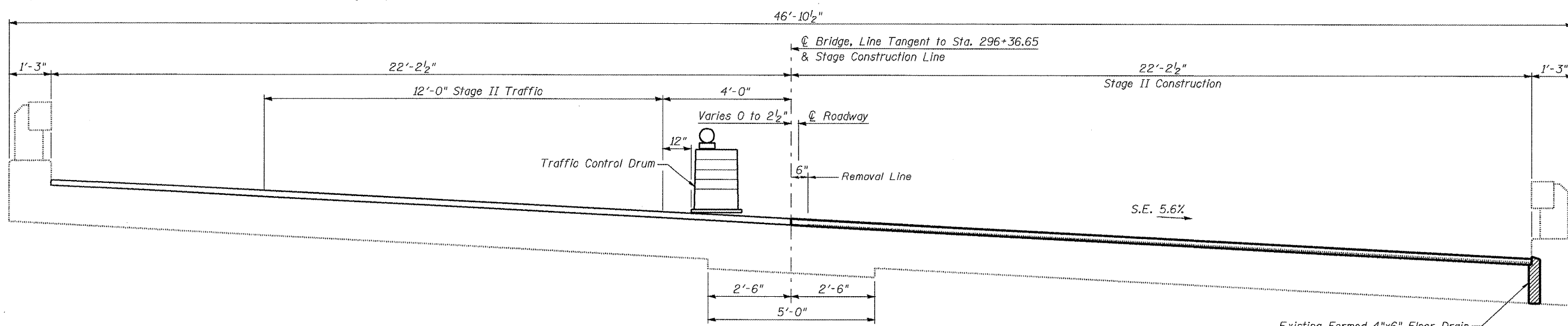
Feb-10-2010 01:52:38PM



DETAIL A
(Showing Removal)

DETAIL A
(Showing Proposed)

STAGE I CONSTRUCTION
(Looking East)



STAGE II CONSTRUCTION
(Looking East)

Existing Formed 4"x6" Floor Drain
Coat the Interior with a Bonding
Agent & Plug with Concrete

STAGING
IL 106 OVER THE SNY RIVER
SN 075-0024

DESIGNED	KTH
CHECKED	ADL
DRAWN	KTH/BGJ
CHECKED	ADL

KLINGNER & ASSOCIATES, P.C.
Engineers • Architects • Surveyors

615 North Park Street, Chicago, IL Ph: (312) 223-2678 • Fax: (312) 223-2683
 6388 Perry Street, Rock Hill, SC Ph: (716) 221-8818 • Fax: (315) 221-8822
 100 N. 10th Street, Suite 100, Burlington, IA Ph: (319) 753-1536 • Fax: (319) 753-1585
 111 North Perry Street, Galesburg, IL Ph: (309) 342-1842 • Fax: (309) 341-3788
 Internet: klingen.com www.klingen.com

STATE OF ILLINOIS DESIGN FIRM • 1842738

SHEET NO. 2	F.A.P. RTE.	SECTION	COUNTY	TOTAL SHEETS	SHEET NO.
	751	D6 BRIDGE REPAIR 2009	PIKE	22	14
5 SHEETS	CONTRACT NO. 72D44				
FED. ROAD DIST. NO.		ILLINOIS	FED. AID PROJECT		

Klingner & Associates P.C.