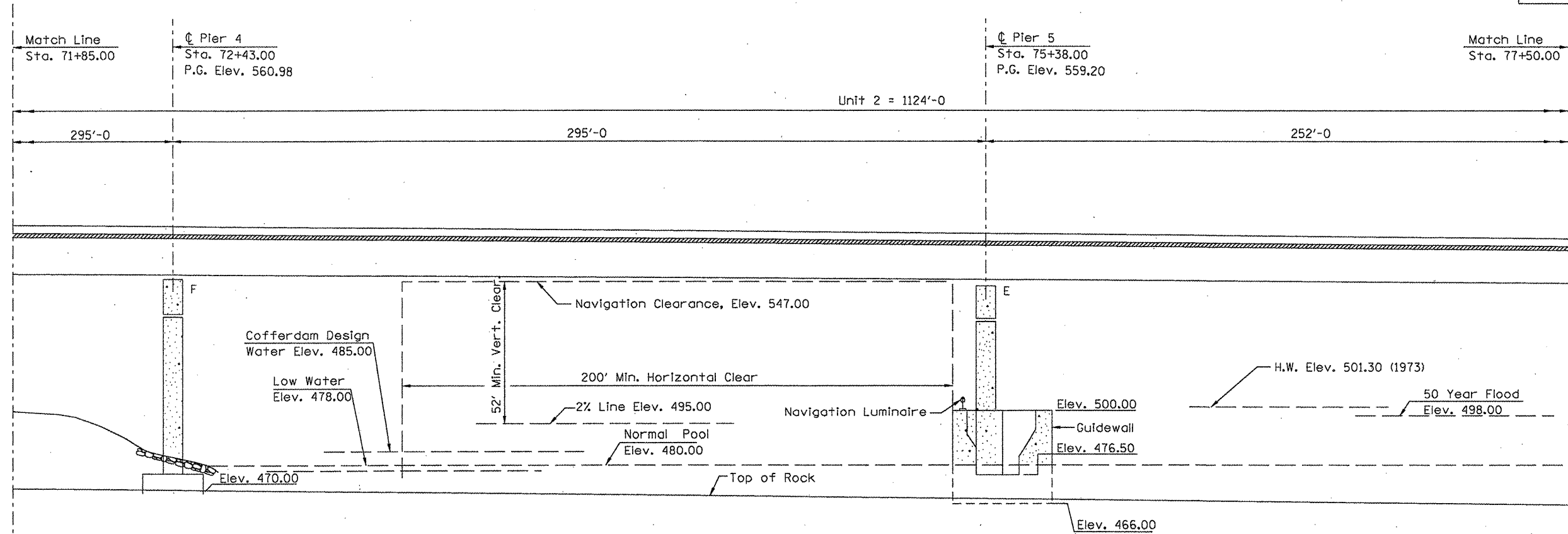
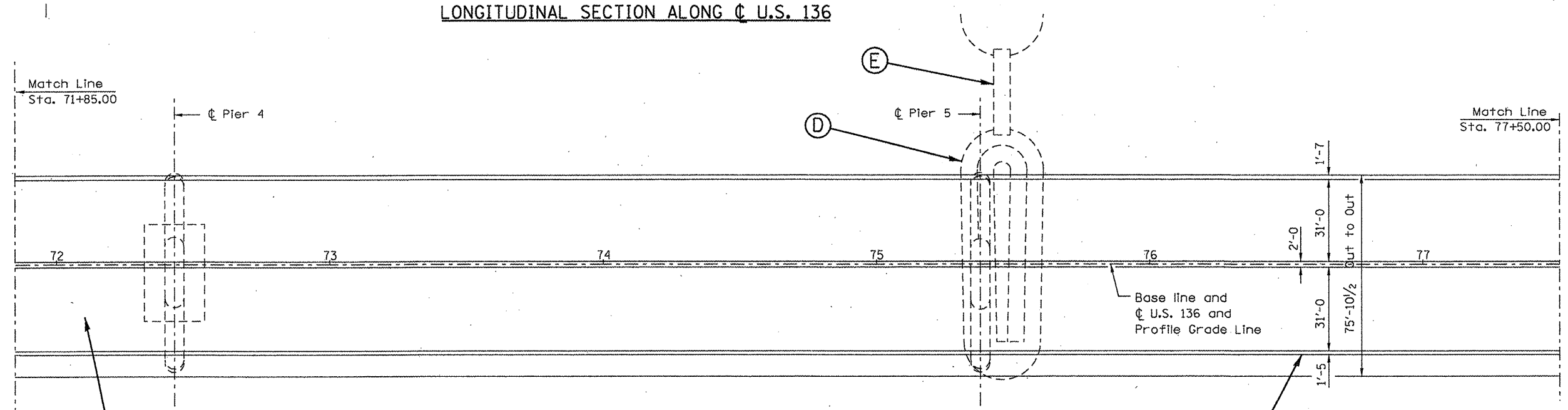


F.A.P. RTE.	SECTION	COUNTY	TOTAL SHEETS	SHEET NO.
315	(22B11-1)	HANCOCK	13	7
STA.		TO STA.		
FED. ROAD DIST. NO. 6		ILLINOIS FED. AID PROJECT		



LONGITUDINAL SECTION ALONG C U.S. 136



○ → DENOTES REPAIR AREA (SEE SCHEDULE)

PLAN

REVISIONS	
NAME	DATE

ILLINOIS DEPARTMENT OF TRANSPORTATION  
**PLAN AND PROFILE**  
 FAP 315 (US 136)  
 SECTION (22B11-1)  
 HANCOCK COUNTY