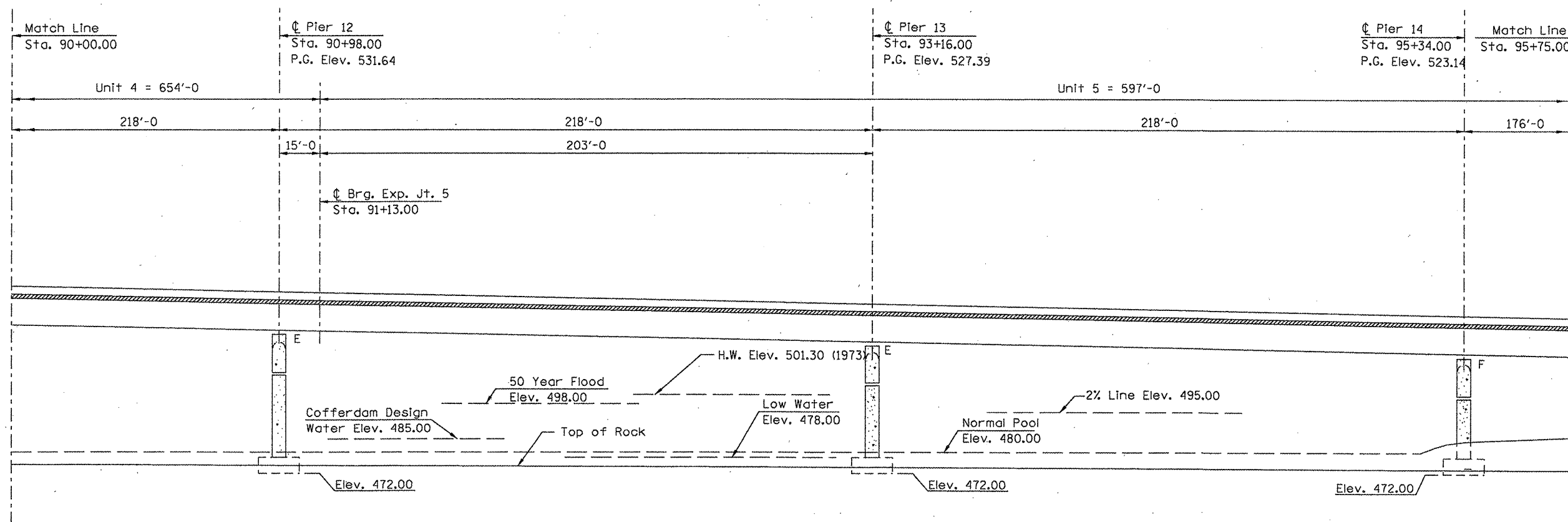
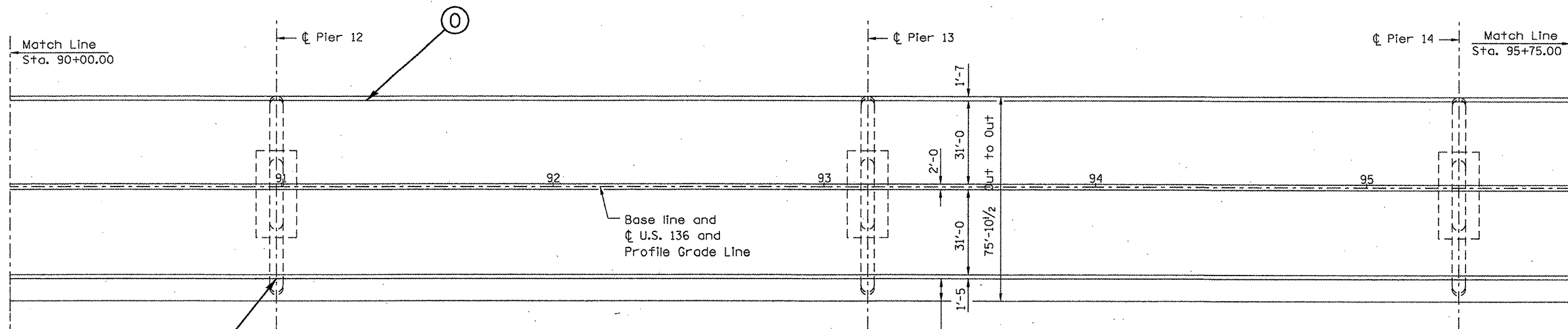


| F.A.P. RTE. | SECTION | COUNTY | TOTAL SHEETS | SHEET NO. |
|-------------|----------|---------|--------------|-----------|
| 315 | (228)1-1 | HANCOCK | 13 | 10 |



LONGITUDINAL SECTION ALONG U.S. 136



N
O DENOTES REPAIR AREA (SEE SCHEDULE)

PLAN

| REVISIONS | |
|-----------|------|
| NAME | DATE |
| | |
| | |
| | |
| | |
| | |
| | |
| | |
| | |
| | |
| | |

ILLINOIS DEPARTMENT OF TRANSPORTATION
 PLAN AND PROFILE
 FAP 315 (US 136)
 SECTION (228)1-1
 HANCOCK COUNTY