

STATE OF ILLINOIS
DEPARTMENT OF TRANSPORTATION

Notes:

Space reinforcement in cap to miss anchor bolts.
Pour steps monolithically with cap.
For details of piles, see sheet 50 of 58.
Clear cover noted to mechanical splicer, where applicable.
See sheet 47 of 58 for Bar Details.
See sheet 48 of 58 for Footing Plan
For Anchor Bolt and Side Retainer details see sheet 32 of 58.
For details $v_1(E)$ bars see sheet 32 of 58.
See sheet 49 of 58 for Bar Splicer and Mechanical Splicer details.

PILE DATA

Type: HP 14x73
Nominal Required Bearing: 578k
Factored Resistance Available: 289k
Est. Length: 70'-0" Pier 2
51'-0" Pier 3
No. Production Piles: 38 per Pier
No. Test Piles: 1 per Pier
Top of Pile Elevation = 486.26

ELEVATION DATA

Elev.	Pier 2	Pier 3
A	521.42	521.42
B	521.57	521.55
C	521.71	521.68
D	521.81	521.76
E	521.74	521.76
F	521.66	521.65
G	521.50	521.51

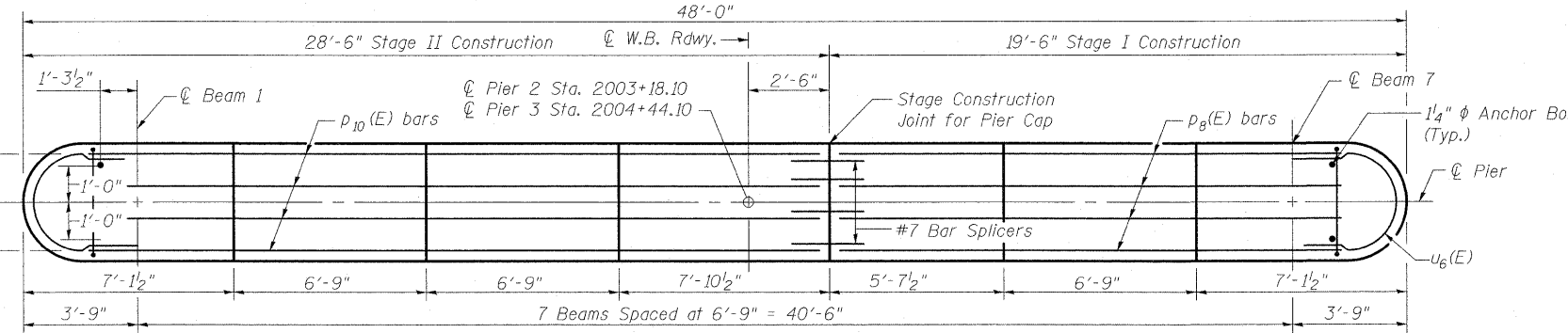
STEP HEIGHTS

Elev.	Pier 2	Pier 3
A to B	+1 $\frac{3}{4}$ "	+1 $\frac{1}{2}$ "
B to C	+1 $\frac{3}{4}$ "	+1 $\frac{5}{8}$ "
C to D	+1 $\frac{1}{8}$ "	+1"
D to E	- $\frac{3}{2}$ "	0"
E to F	-1"	-1 $\frac{3}{8}$ "
F to G	-1 $\frac{1}{8}$ "	-1 $\frac{5}{8}$ "

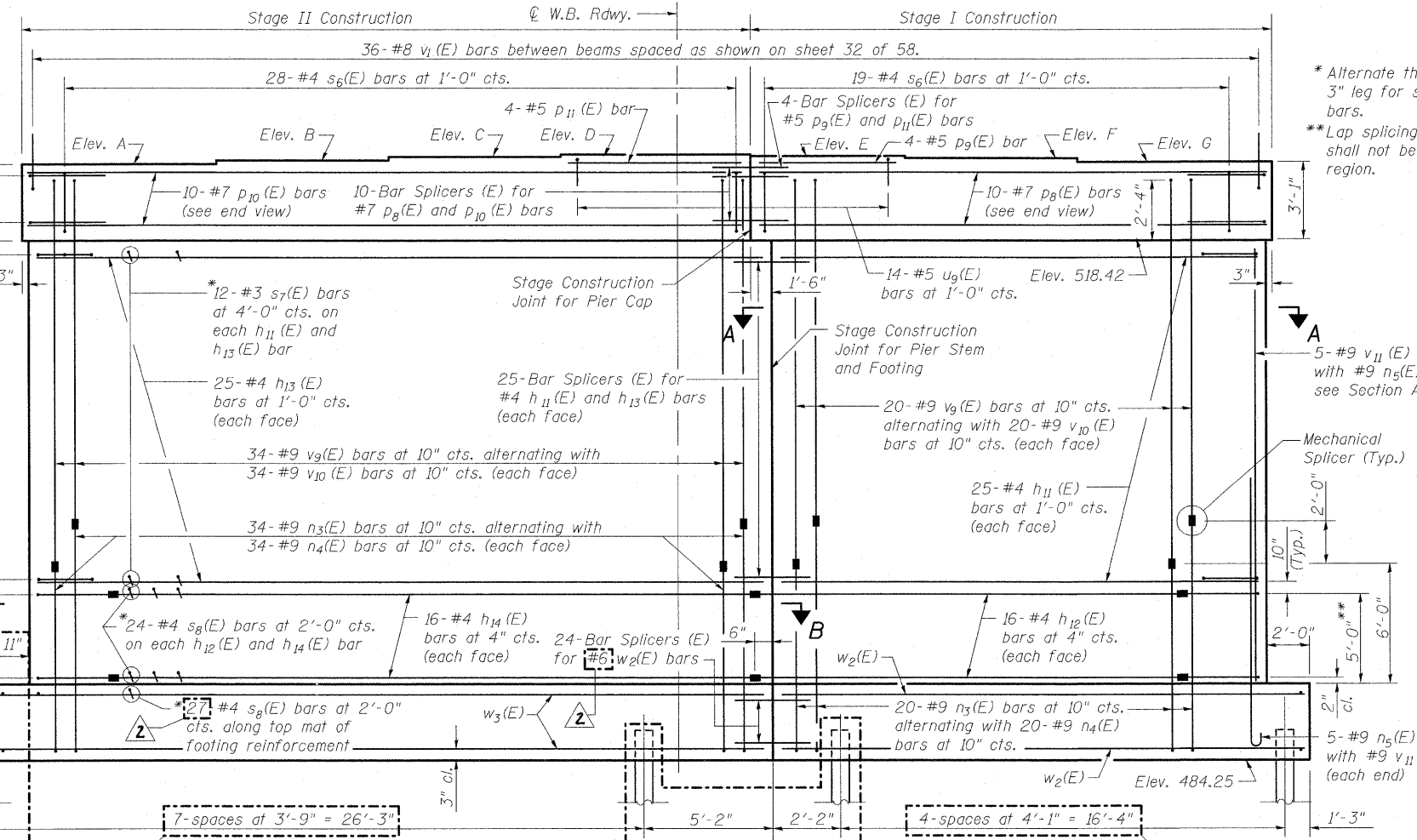
BILL OF MATERIAL FOR FOUR PIERS

Bar	No.	Size	Length	Shape
$h_{11}(E)$	200	#4	16'-0"	—
$h_{12}(E)$	128	#4	16'-3"	—
$h_{13}(E)$	200	#4	28'-0"	—
$h_{14}(E)$	128	#4	27'-3"	—
$n_3(E)$	432	#9	11'-0"	U
$n_4(E)$	432	#9	13'-0"	U
$n_5(E)$	40	#9	11'-7"	U
$p_8(E)$	40	#7	17'-6"	—
$p_9(E)$	16	#5	5'-4"	—
$p_{10}(E)$	40	#7	26'-6"	—
$p_{11}(E)$	16	#5	7'-7"	—
$s_6(E)$	188	#4	12'-5"	□
$s_7(E)$	1200	#3	3'-4"	—
$s_8(E)$	1644	#4	3'-4"	—
$u_6(E)$	24	#4	7'-8"	U
$u_7(E)$	200	#4	10'-7"	U
$u_8(E)$	128	#4	5'-3"	U
$u_9(E)$	56	#5	5'-2"	U
$v_1(E)$	144	#8	4'-2"	U
$v_9(E)$	432	#9	27'-9"	U
$v_{10}(E)$	432	#9	25'-9"	U
$v_{11}(E)$	40	#9	29'-11"	U
$w_2(E)$	96	#6	19'-3"	—
$w_3(E)$	96	#6	32'-2"	—
Concrete Structures		Cu. Yd.	1110.8	
Reinforcement Bars, Epoxy Coated		Pound	77895	
Furnishing Steel Piles, HP 14x73		Foot	9196	
Driving Piles		Foot	9196	
Test Piles, Steel HP 14x73		Each	4	
Bar Splicers		Each	352	
Anchor Bolts, 1 $\frac{1}{4}$ "		Each	16	
Mechanical Splicers		Each	1248	

PIER 2 & 3 (W.B.)
STRUCTURE NO. 025-0108

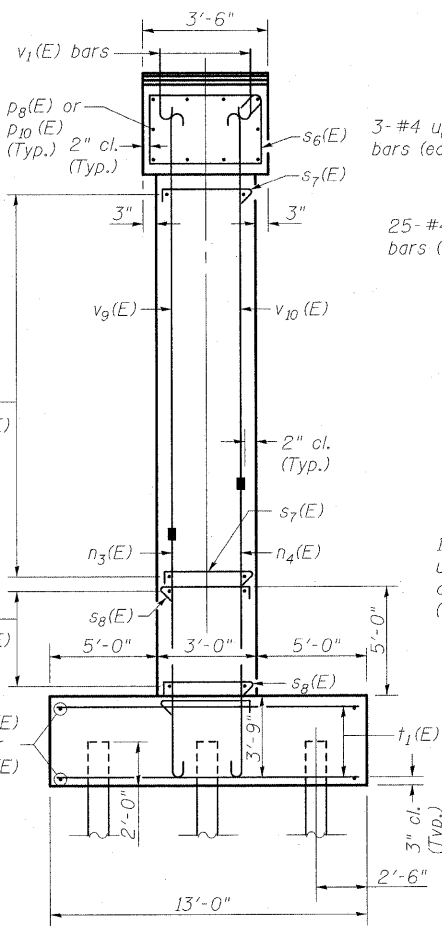


TOP PLAN

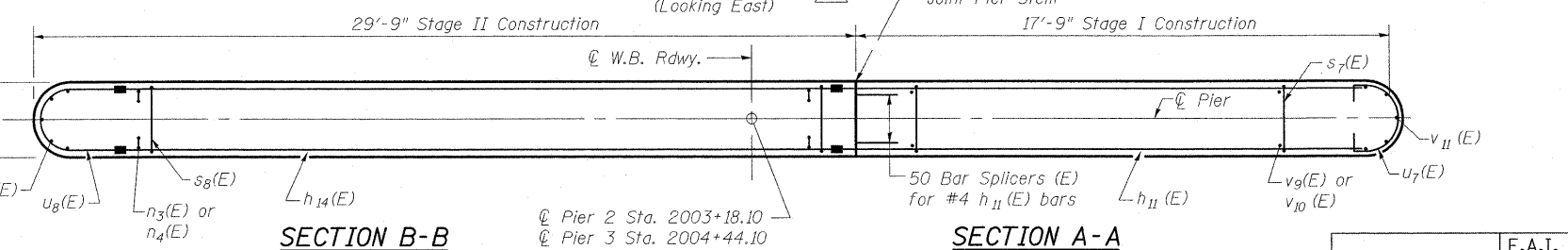


ELEVATION (Looking East)

* Alternate the placement of 3" leg for $s_7(E)$ and $s_8(E)$ bars.
** Lap splicing of reinforcement shall not be allowed in this region.



END VIEW



DESIGNED	B.B.
CHECKED	A.C.S.
DRAWN	W.J.S.
CHECKED	C.J.F. & B.B.

BERNARDIN LOCHMUELLER & ASSOCIATES, INC.
3 Oak Drive
Maryville, IL 62962-5635
Local (618) 288-4665
Fax 618-288-4666

SHEET NO. 46	F.A.I. RTE. 70	SECTION (25-3)B	COUNTY EFFINGHAM	TOTAL SHEETS 1416	SHEET NO. 78
58 SHEETS	SN 025-0108		CONTRACT NO. 74296		
FED. ROAD DIST. NO. 7 ILLINOIS FED. AID PROJECT 70					