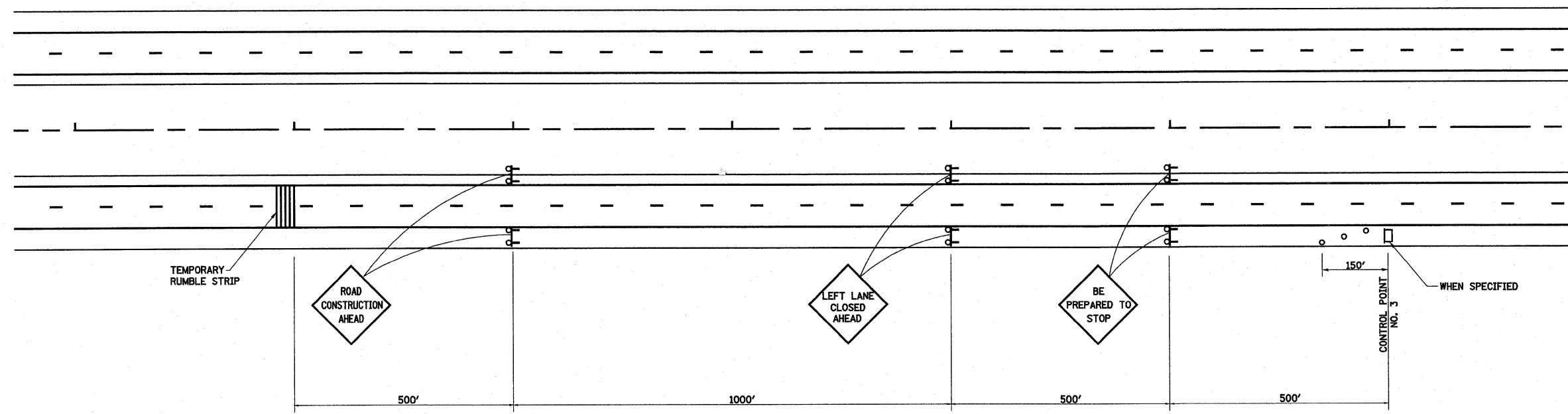


**TRAFFIC CONTROL AND PROTECTION
CASE NO. II**



**TRAFFIC CONTROL AND PROTECTION
CASE NO. III**

LEGEND

- ↑ ARROW BOARD
- ⊕ TYPE III BARRICADE WITH 2 HIGH INTENSITY FLASHING LIGHTS
- CHANGEABLE MESSAGE SIGN, SPECIAL
- TYPE I OR II BARRICADE WITH MONODIRECTIONAL FLASHING LIGHTS

Added Sheet 7-14-10

FILE NAME =	USER NAME = lunde	DESIGNED - JWS	REVISED -	STATE OF ILLINOIS DEPARTMENT OF TRANSPORTATION	APPROACH TO LANE CLOSURE SOUTH TRI LEVEL			F.A.I. RTE. 57/70	SECTION (25-3)R	COUNTY EFFINGHAM	TOTAL SHEETS 1416	SHEET NO. 1338 D
S:\p\projects\403-00072.51-70\dgn\5 Trl\V\Approach Sign	Lane Closure.dgn	DRAWN - PDB	REVISED -		SCALE:	SHEET NO. 4 OF 4 SHEETS	STA.	TO STA.	FED. ROAD DIST. NO.	ILLINOIS FED. AID PROJECT	CONTRACT NO. 74296	
	PLOT SCALE = 200.0000' / IN.	CHECKED - BRM	REVISED -									
	PLOT DATE = 7/12/2010	DATE - 3-04-08	REVISED -									