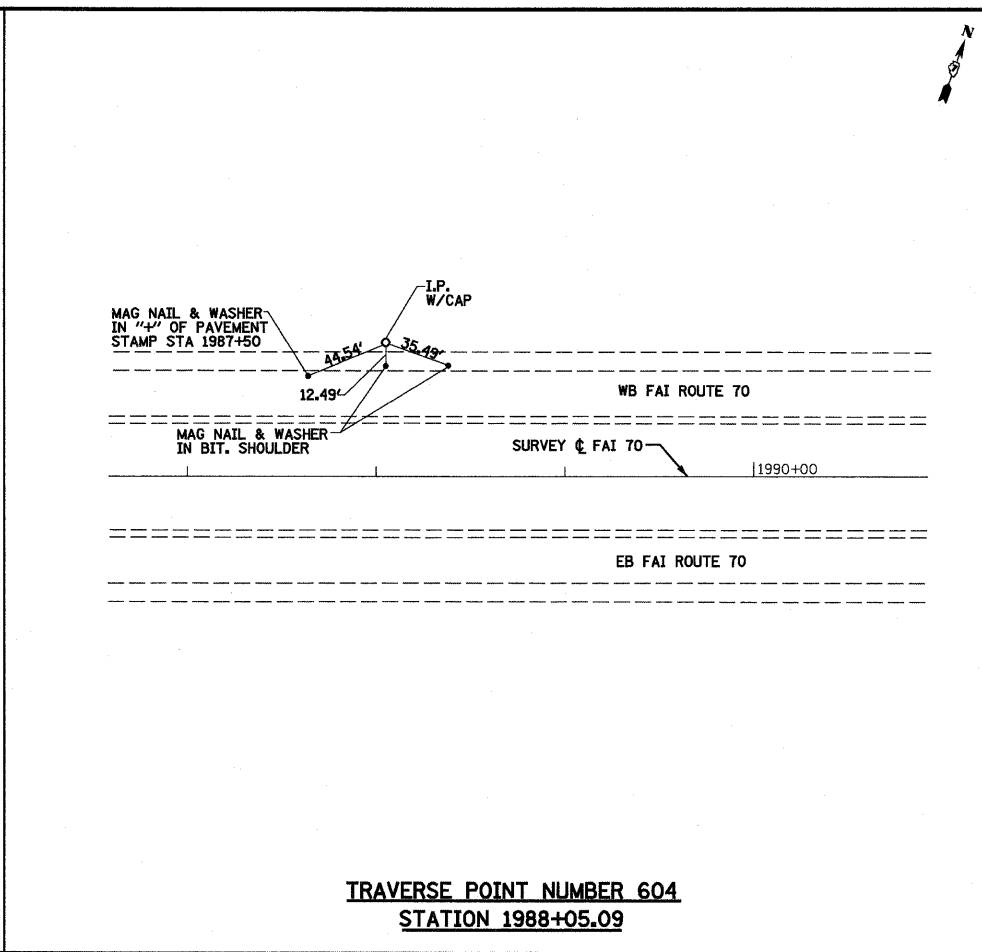
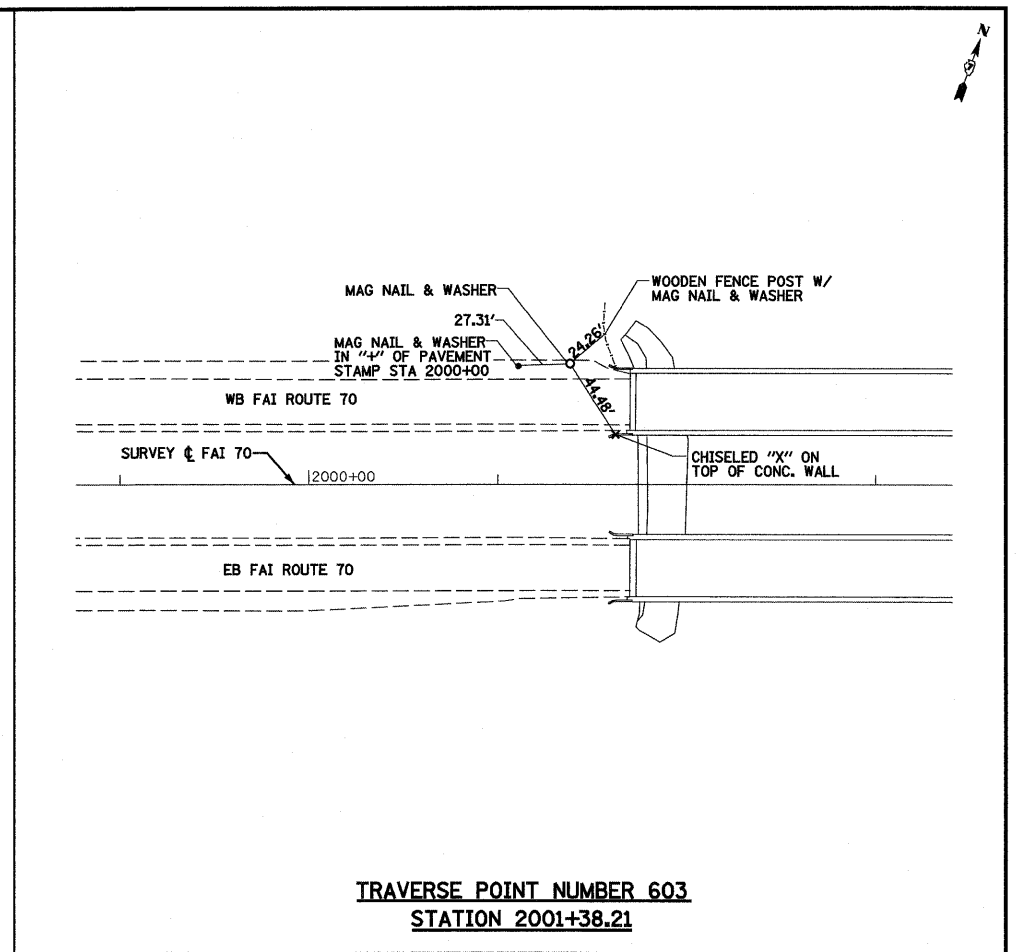


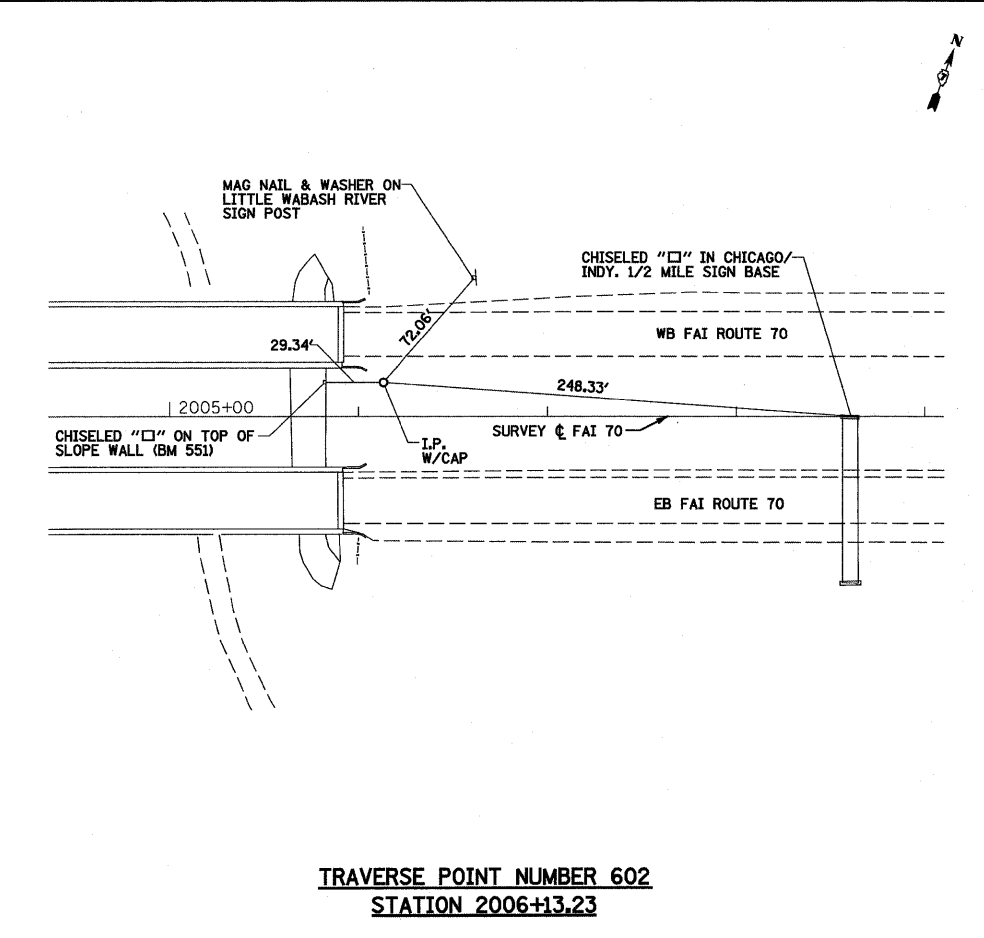
**TRAVERSE POINT NUMBER 605**  
**STATION 1972+67.00**



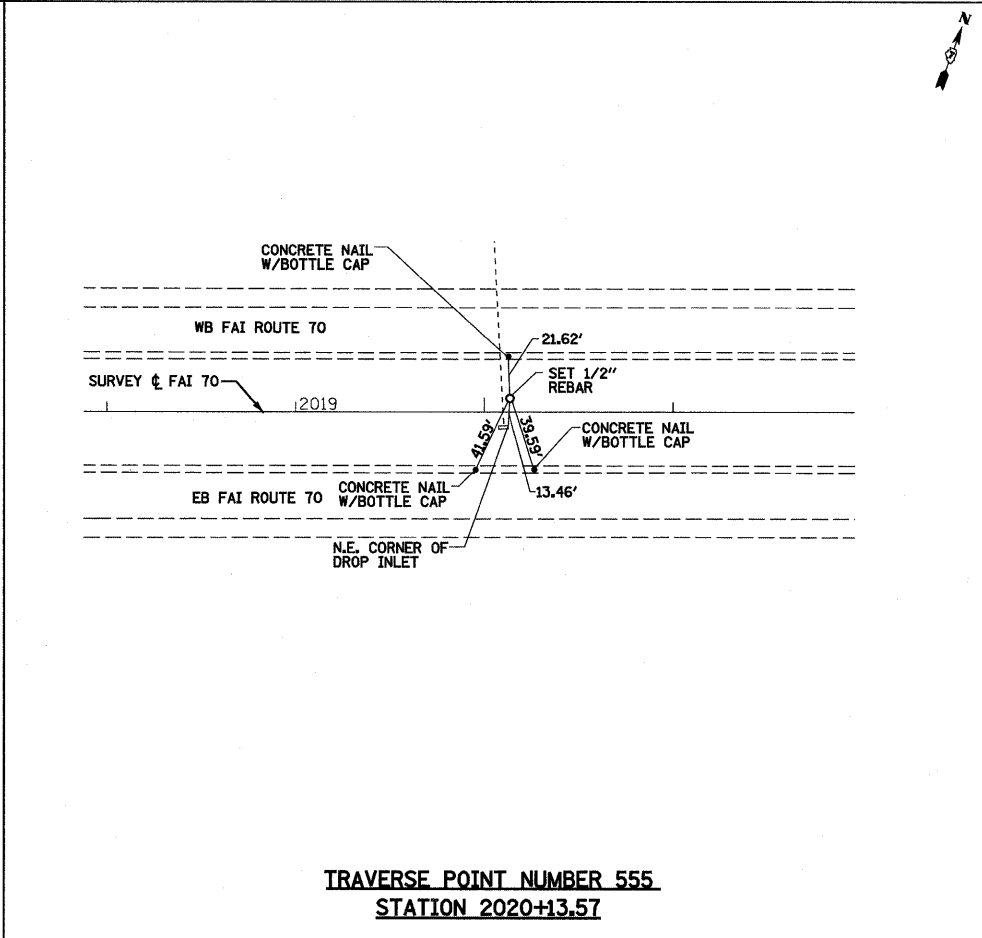
**TRAVERSE POINT NUMBER 604**  
**STATION 1988+05.09**



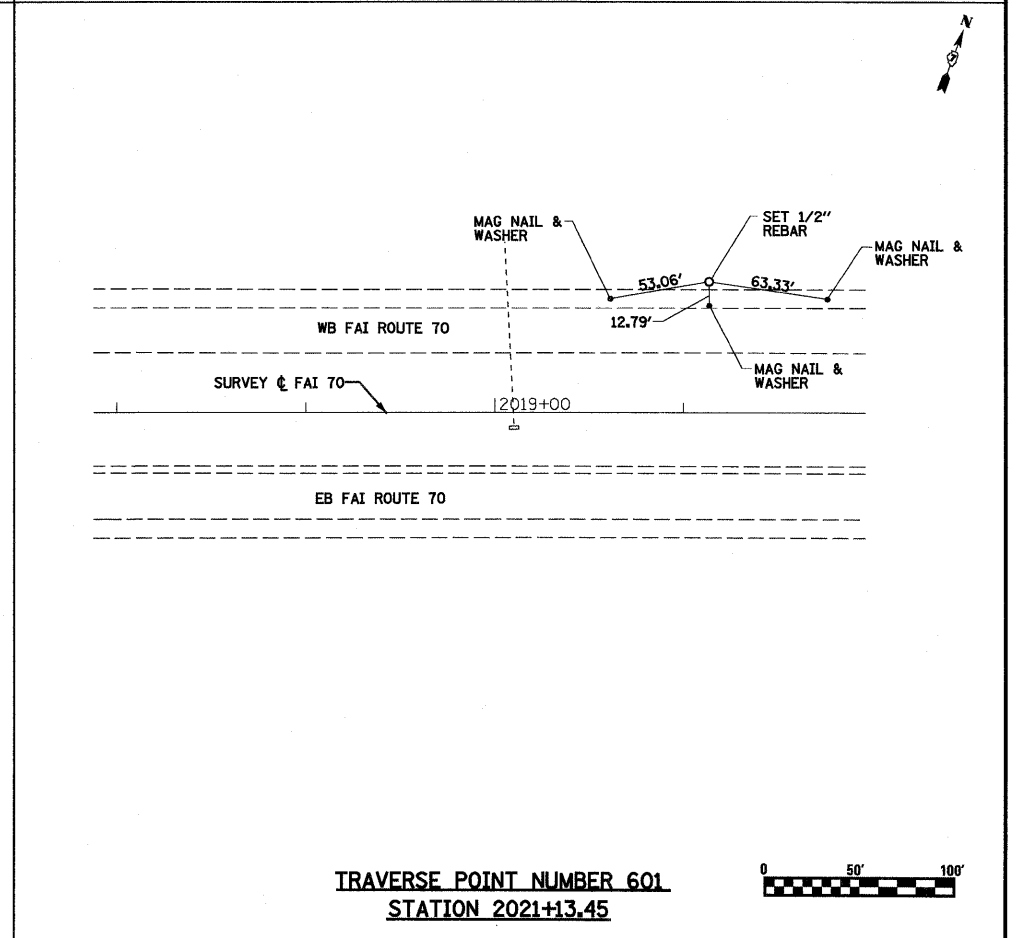
**TRAVERSE POINT NUMBER 603**  
**STATION 2001+38.21**



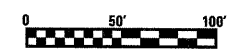
**TRAVERSE POINT NUMBER 602**  
**STATION 2006+13.23**



**TRAVERSE POINT NUMBER 555**  
**STATION 2020+13.57**



**TRAVERSE POINT NUMBER 601**  
**STATION 2021+13.45**



FILE NAME =	USER NAME =
S:\Projects\488-000-01 Little Wabash\488-000-01\Drawings\488-000-01-418.dwg	
PLOT SCALE =	PLOT DATE =

DESIGNED - JWS	REVISOR
DRAWN - MAB	REVISION
CHECKED - BRM	REVISION
DATE - 3-20-09	REVISION

**STATE OF ILLINOIS**  
**DEPARTMENT OF TRANSPORTATION**

**TIE POINTS, FAI ROUTE 70**

SCALE: 1"=50'    SHEET NO. 2 OF 2 SHEETS    STA.    TO STA.

F.A.I. RTE.	SECTION	COUNTY	TOTAL SHEETS	SHEET NO.
70	(25-3)B	EFFINGHAM	1416	19
CONTRACT NO. 74296				
FED. ROAD DIST. NO.    ILLINOIS FED. AID PROJECT				