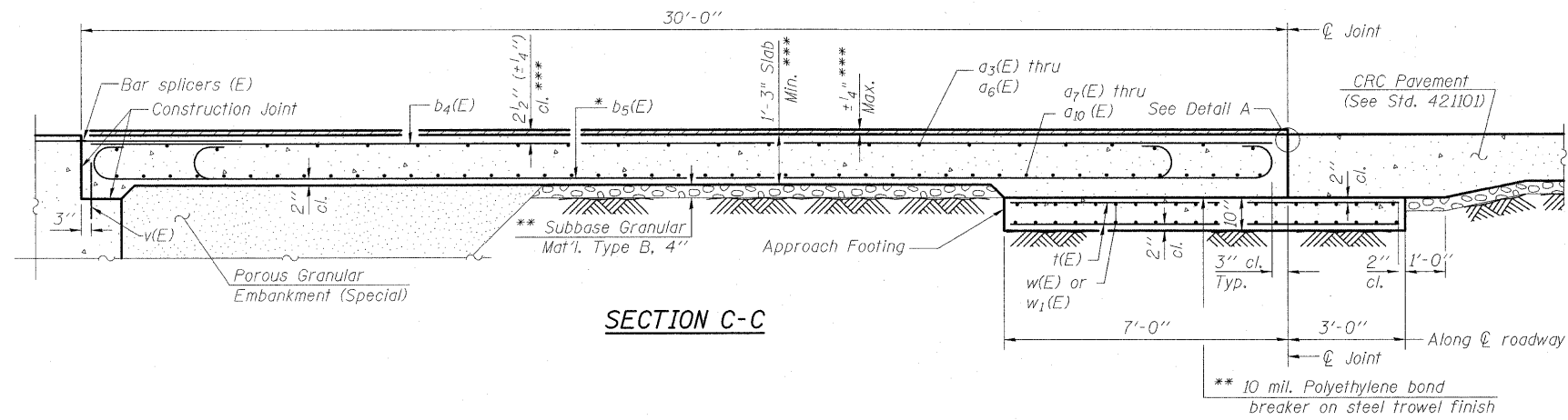


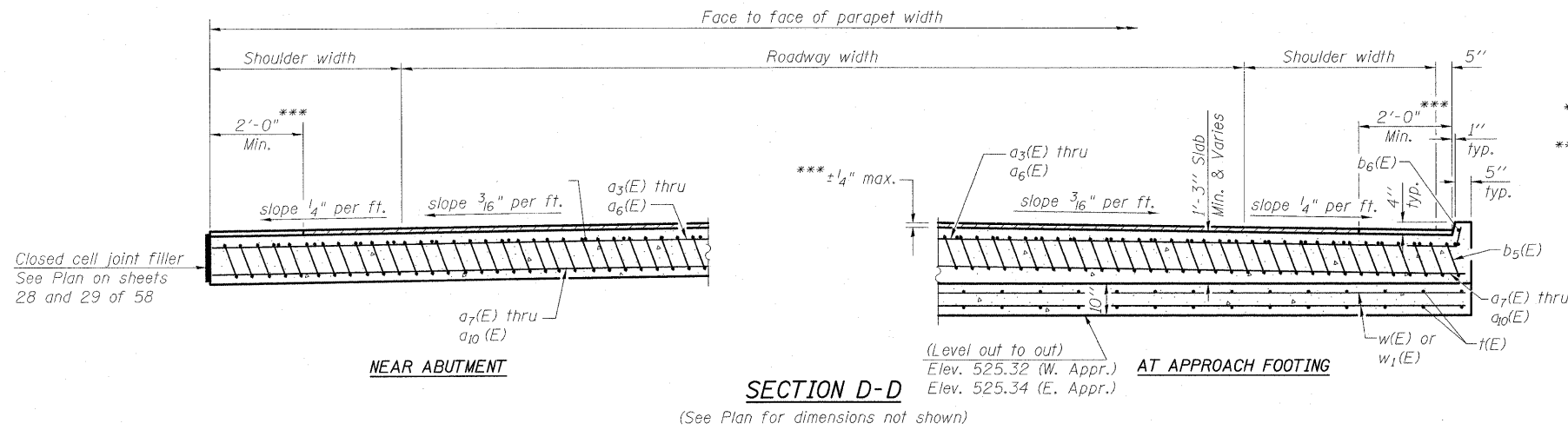
STATE OF ILLINOIS  
DEPARTMENT OF TRANSPORTATION

Notes:

Approach slab concrete shall be paid for as Concrete Superstructure.  
Approach footing concrete shall be paid for as Concrete Structures.  
Reinforcement shall be paid for as Reinforcement Bars, Epoxy Coated.  
For v(E) bar details, see sheet 40 of 58.  
The approach footing maximum applied service bearing pressure ( $Q_{max}$ ) = 2.0 ksf.  
For bar splicer details, see sheet 49 of 58.  
Cost of excavation for approach footing included with Concrete Structures.  
For Porous Granular Embankment (Special) and drainage treatment details, see sheet 2 of 58.



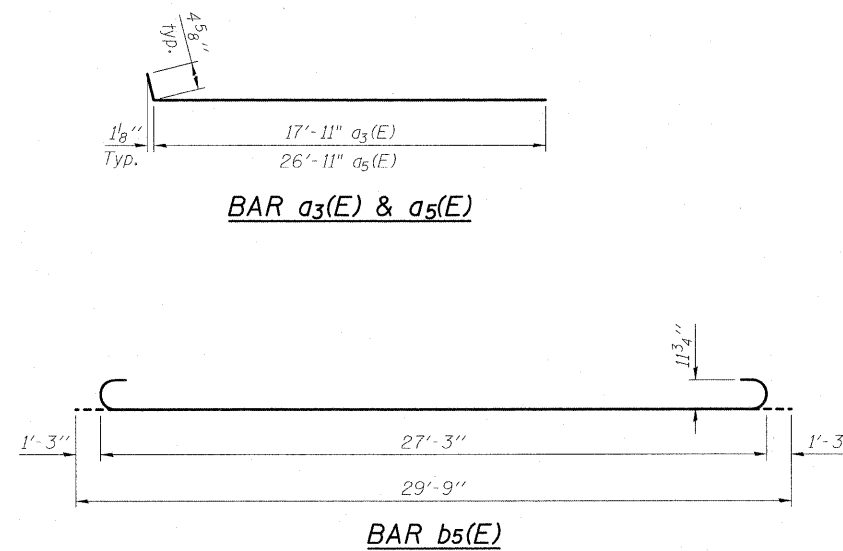
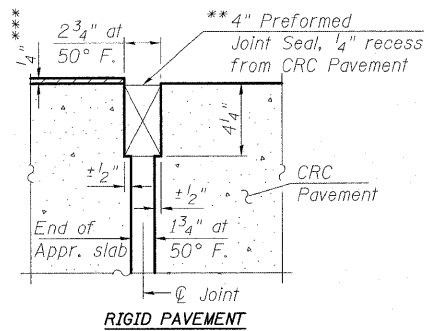
Indicates deck removal.  
See Diamond Grinding and Surface Testing Bridge Sections Special Provisions.



\* Tilt #9 b5(E) bars as required to maintain clearance.  
\*\* Cost included with Concrete Superstructure.  
\*\*\* See Diamond Grinding and Surface Testing Bridge Sections Special Provisions.

FOUR APPROACHES  
BILL OF MATERIAL

Bar	No.	Size	Length	Shape
a3(E)	48	#4	18'-4"	—
a4(E)	52	#4	17'-3"	—
a5(E)	48	#4	27'-4"	—
a6(E)	52	#4	26'-3"	—
a7(E)	88	#5	18'-2"	—
a8(E)	96	#5	17'-3"	—
a9(E)	88	#5	27'-2"	—
a10(E)	96	#5	26'-3"	—
b4(E)	144	#4	29'-8"	—
b5(E)	424	#9	29'-9"	—
b6(E)	8	#4	13'-9"	—
t(E)	376	#4	9'-8"	—
w(E)	160	#5	18'-1"	—
w1(E)	160	#5	27'-1"	—
Concrete Superstructure		Cu. Yd.	270.1	
Concrete Structures		Cu. Yd.	56.6	
Reinforcement Bars, Epoxy Coated		Pound	67280	
Bar Splicers		Each	444	



DESIGNED	B.B.
CHECKED	A.C.S.
DRAWN	W.J.S.
CHECKED	C.J.F. & B.B.

BRIDGE APPROACH SLAB DETAILS  
S.N. 025-0107 & 025-0108

**BERNARDIN LOCHMUELLER & ASSOCIATES, INC.**

3 Oak Drive  
Maryville, IL 62962-5635  
Local (618) 288-4666  
Fax 618-386-4996

SHEET NO. 30 58 SHEETS	F.A.I. RTE.	SECTION	COUNTY	TOTAL SHEETS	SHEET NO.
	70	(25-3)B	EFFINGHAM	1416	62
SN 025-0107 & 025-0108			CONTRACT NO. 74296		
FED. ROAD DIST. NO. 7 ILLINOIS FED. AID PROJECT 70					