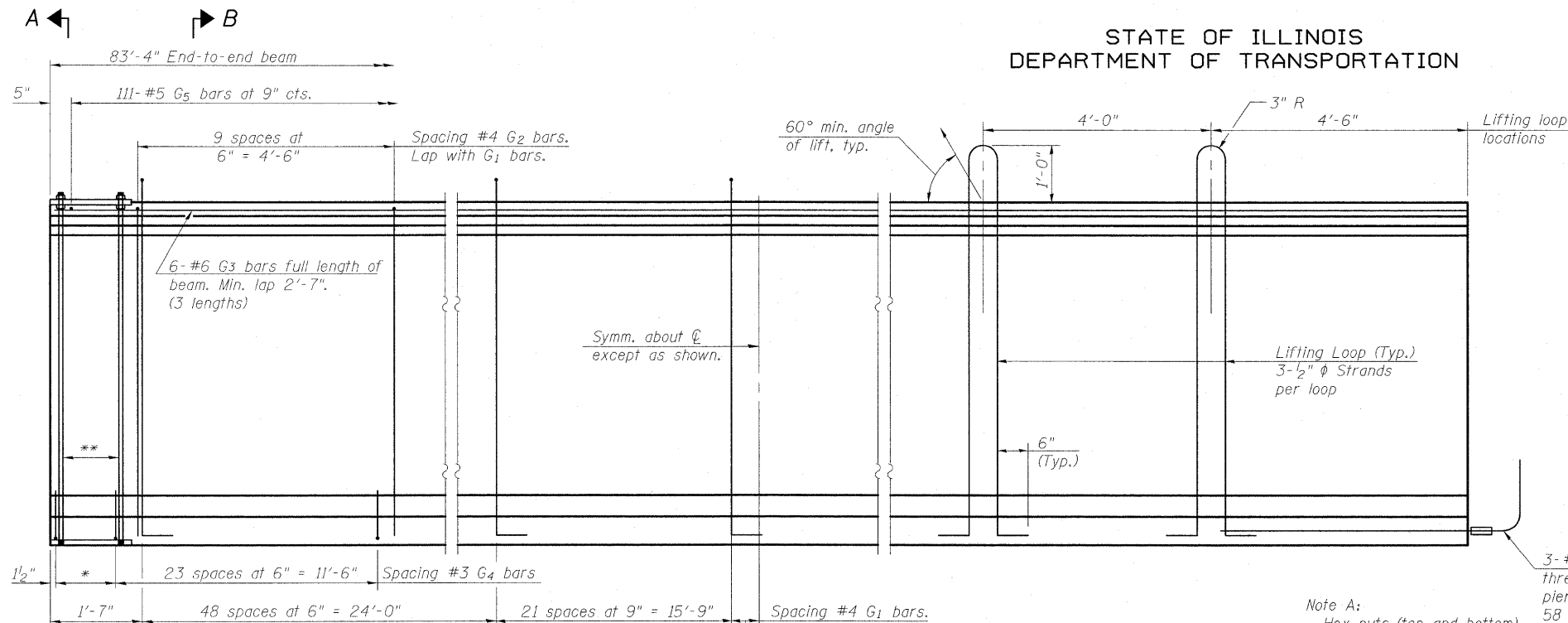


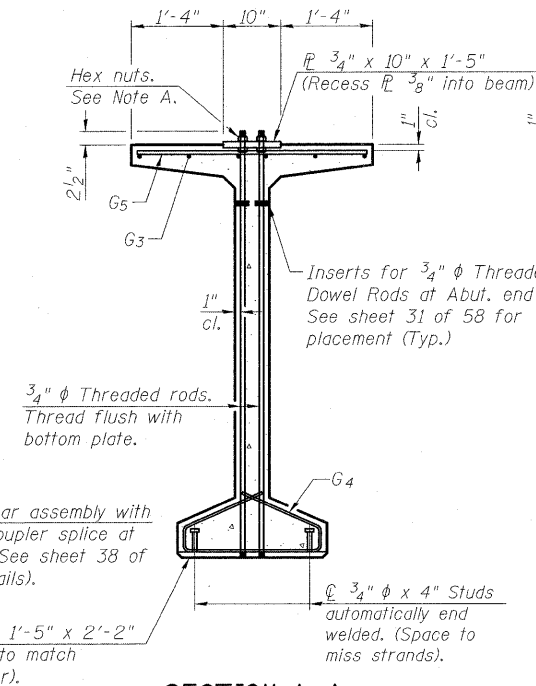
STATE OF ILLINOIS
DEPARTMENT OF TRANSPORTATION



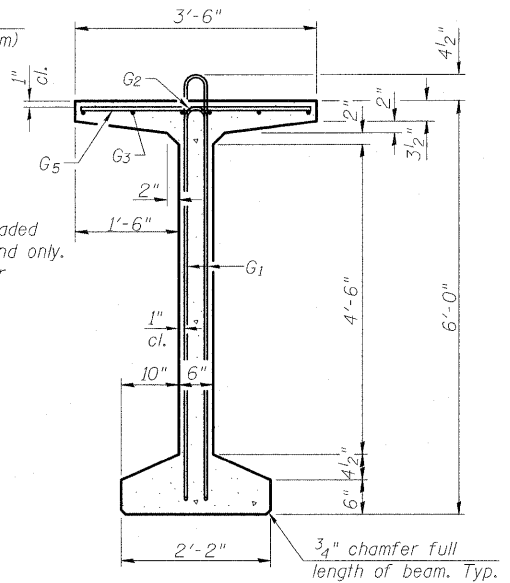
ELEVATION OF BEAM
(Showing reinforcement & dimensions)

* 4 spaces at 3/4" = 1'-1".
** 5-3/4" diameter threaded dowel rods at 3/4" cts., each face.

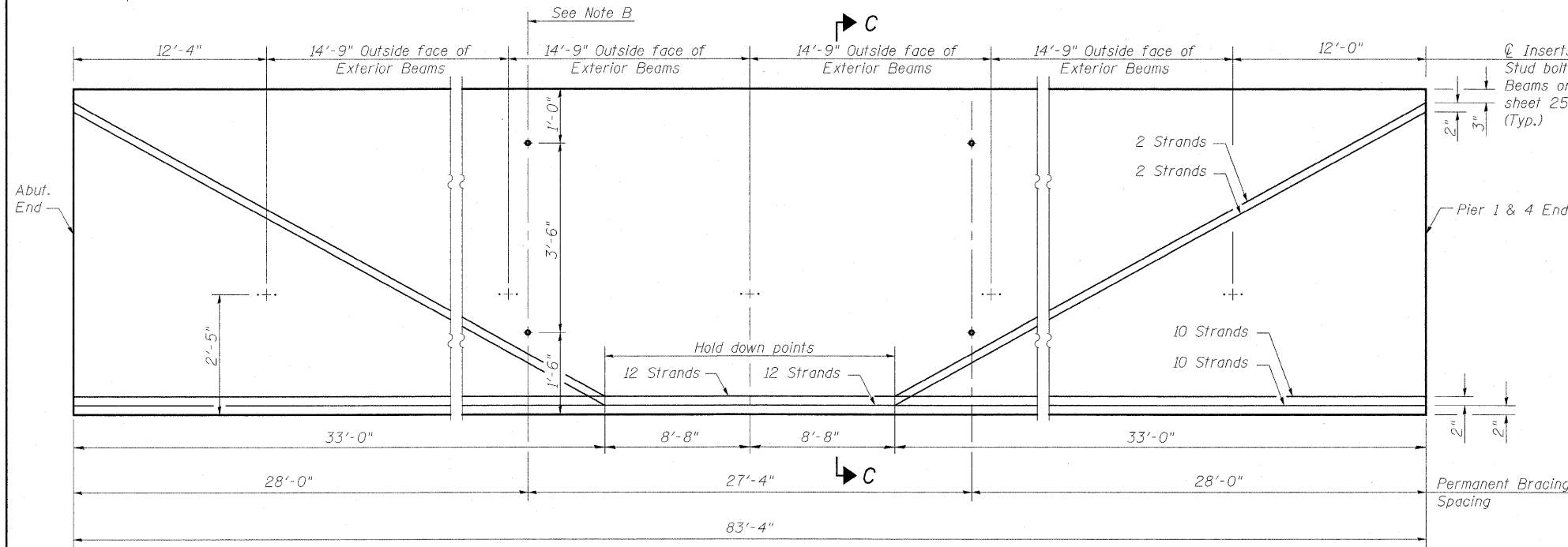
Note A:
Hex nuts (top and bottom) with lock washers (top). Only tighten sufficiently to compress lock washers.



SECTION A-A

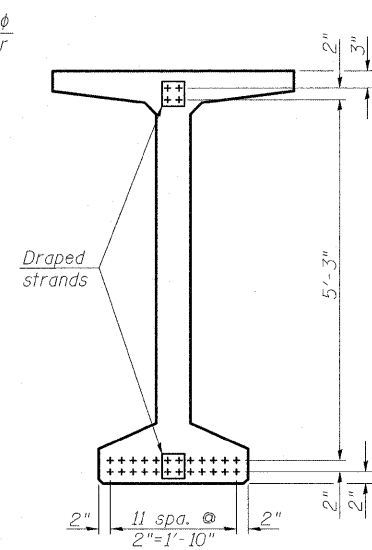


SECTION B-B



ELEVATION OF BEAM
(Showing prestressing steel)

Note B:
1" I.D. formed holes with PVC pipe cast at right angles to web. Locate to miss strands. See sheet 33 of 58 for details of Permanent Bracing.



SECTION C-C

*****BAR LIST
ONE BEAM ONLY**

Bar	No.	Size	Length	Shape
G ₁	140	#4	13'-5"	∩ L
G ₂	20	#4	11'-8"	∩
G ₃	18	#6	29'-6"	—
G ₄	56	#3	4'-11"	∩
G ₅	111	#5	3'-4"	—
G ₆	3	#8	6'-6"	U

***For information only

Notes:
See sheet 38 of 58 for additional details and Bill of Material.
Required release strength, f'ci, shall be 5,000 psi.

**72" PPC BULB T-BEAM
Span 1 & 5
S.N. 025-0107 & 025-0108**

DESIGNED	B.B.
CHECKED	A.C.S.
DRAWN	W.J.S.
CHECKED	C.J.F. & B.B.

BERNARDIN LOCHMUELLER & ASSOCIATES, INC.
3 Oak Drive
Maryville, IL 62462-5685
Local (618) 288-4665
Fax 618-288-4666

SHEET NO. 35 58 SHEETS	F.A.I. RTE. 70	SECTION (25-3)B	COUNTY EFFINGHAM	TOTAL SHEETS 1416	SHEET NO. 67
	SN 025-0107 & 025-0108		CONTRACT NO. 74296		
FED. ROAD DIST. NO. 7 ILLINOIS FED. AID PROJECT 70					