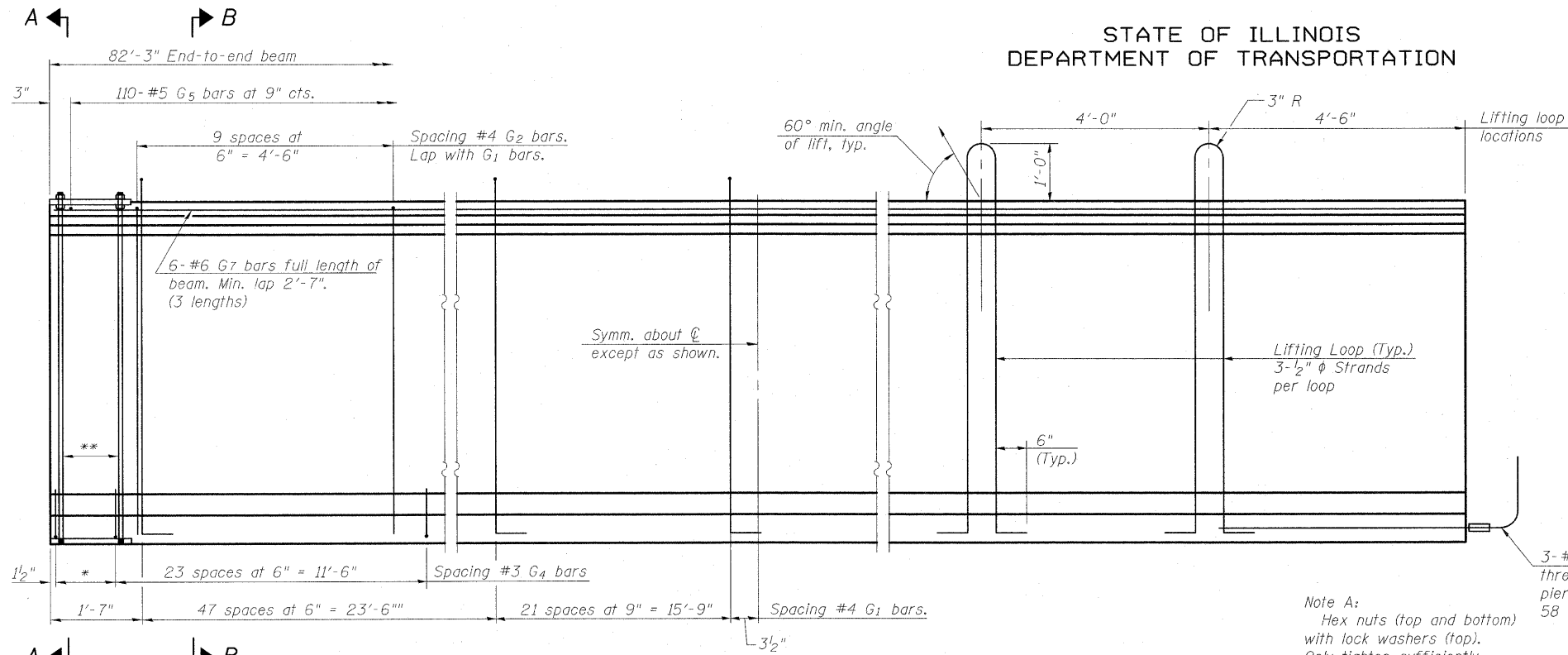


STATE OF ILLINOIS  
DEPARTMENT OF TRANSPORTATION



**ELEVATION OF BEAM**  
(Showing reinforcement & dimensions)

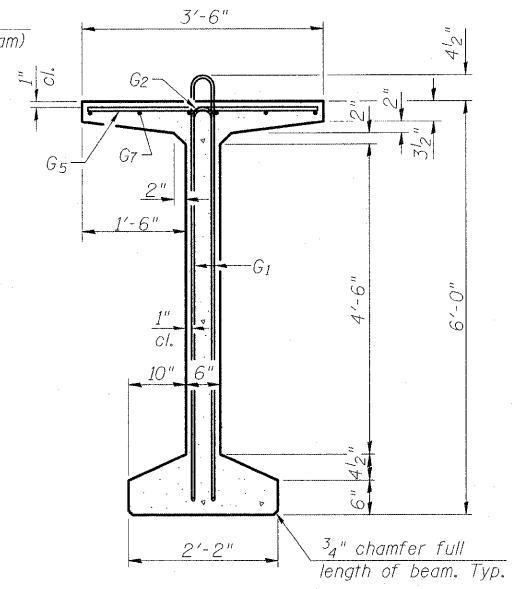
\* 4 spaces at 3/4" = 1'-1".  
\*\* 5-3/4" diameter threaded dowel rods at 3/4" cts., each face.

Note A:  
Hex nuts (top and bottom) with lock washers (top). Only tighten sufficiently to compress lock washers.

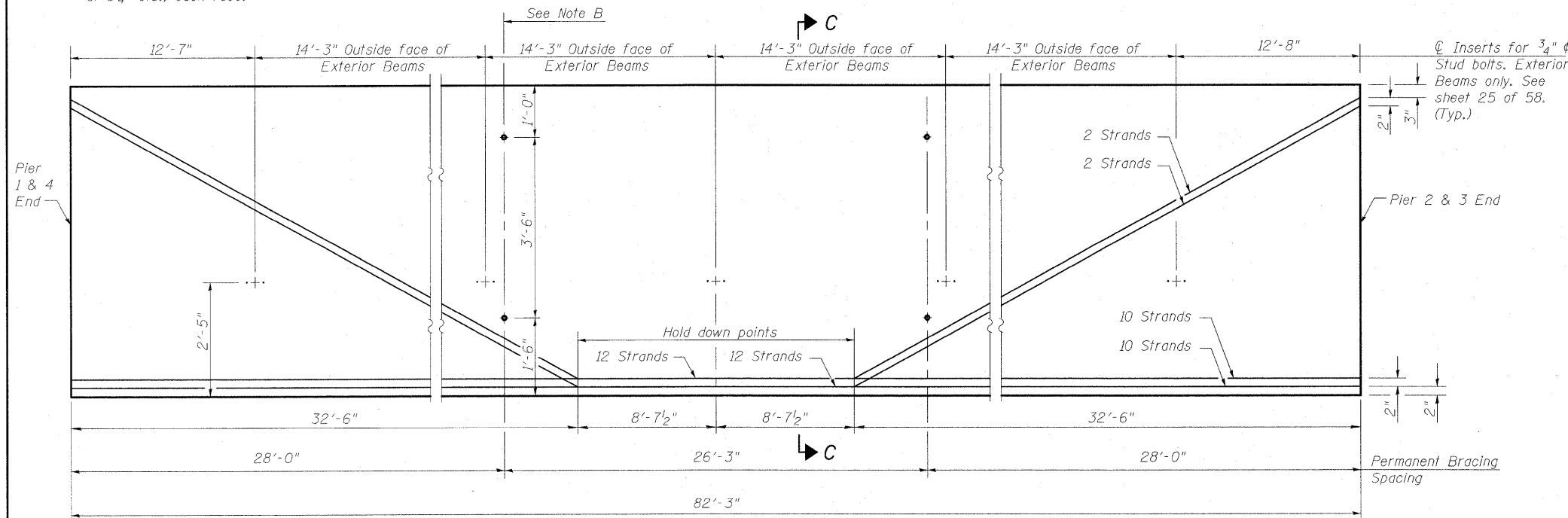
3-#8 G6 bar assembly with threaded coupler splice at pier only. (See sheet 38 of 58 for details).

1" x 1'-5" x 2'-2" (Bevel to match chamfer).

**SECTION A-A**

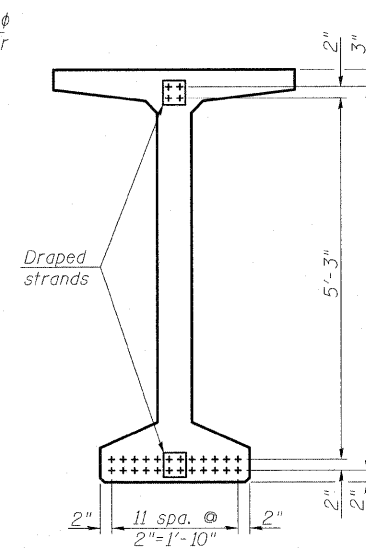


**SECTION B-B**



**ELEVATION OF BEAM**  
(Showing prestressing steel)

Note B:  
1" I.D. formed holes with PVC pipe cast at right angles to web. Locate to miss strands. See sheet 33 of 58 for details of Permanent Bracing.



**SECTION C-C**

**\*\*\*BAR LIST  
ONE BEAM ONLY**

Bar	No.	Size	Length	Shape
G1	138	#4	13'-5"	∩L
G2	20	#4	11'-8"	∩
G4	56	#3	4'-11"	∩
G5	110	#5	3'-4"	∩
G6	6	#8	6'-6"	∩
G7	18	#6	29'-3"	∩

\*\*\*For information only

Notes:  
See sheet 38 of 58 for additional details and Bill of Material.  
Required release strength, f'ci, shall be 5,000 psi.

DESIGNED	B.B.
CHECKED	A.C.S.
DRAWN	W.J.S.
CHECKED	C.J.F. & B.B.



**BERNARDIN  
LOCHMUELLER &  
ASSOCIATES, INC.**

3 Oak Drive  
Maryville, IL 62983-5635  
Local (618) 288-4665  
Fax 618-288-4666

SHEET NO. 36 58 SHEETS	F.A.I. RTE.	SECTION	COUNTY	TOTAL SHEETS	SHEET NO.
	70	(25-3)B	EFFINGHAM	1416	68
SN 025-0107 & 025-0108			CONTRACT NO. 74296		
FED. ROAD DIST. NO. 7 ILLINOIS FED. AID PROJECT 70					

**72" PPC BULB T-BEAM**  
**Span 2 & 4**  
**S.N. 025-0107 & 025-0108**