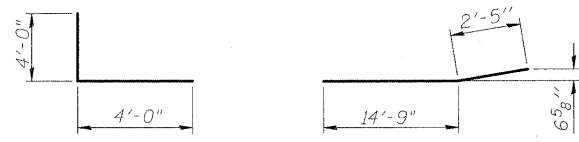
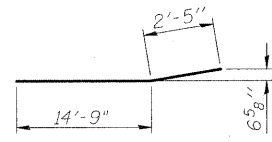


STATE OF ILLINOIS
DEPARTMENT OF TRANSPORTATION

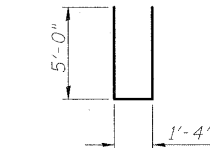
Elev.	West Abut.		East Abut.	
	Grade Elevations	Theoretical Grade Elevations Adjusted for Grinding	Grade Elevations	Theoretical Grade Elevations Adjusted for Grinding
A	527.55	527.57	527.56	527.58
B	527.99	528.01	528.00	528.02
C	527.64	527.66	527.65	527.67
D	526.22		526.23	
E	520.02		520.03	
F	520.16		520.17	
G	520.31		520.28	
H	520.41		520.36	
I	520.33		520.36	
J	520.26		520.25	
K	520.10		520.11	
L	516.52		516.53	



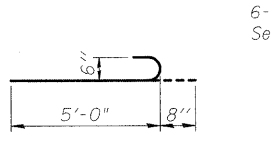
BAR h4(E)



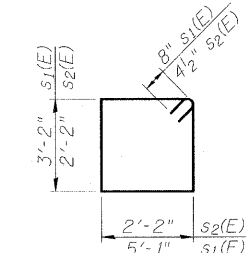
BAR h6(E)



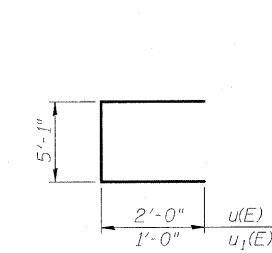
BAR n(E)



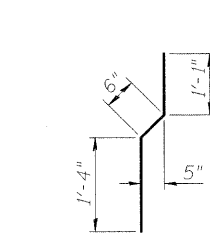
BAR n1(E)



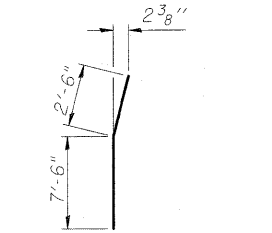
BARS s1(E) & s2(E)



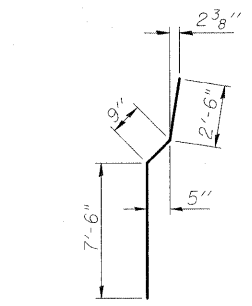
BAR u(E) & u1(E)



BAR v4(E)



BAR v6(E)

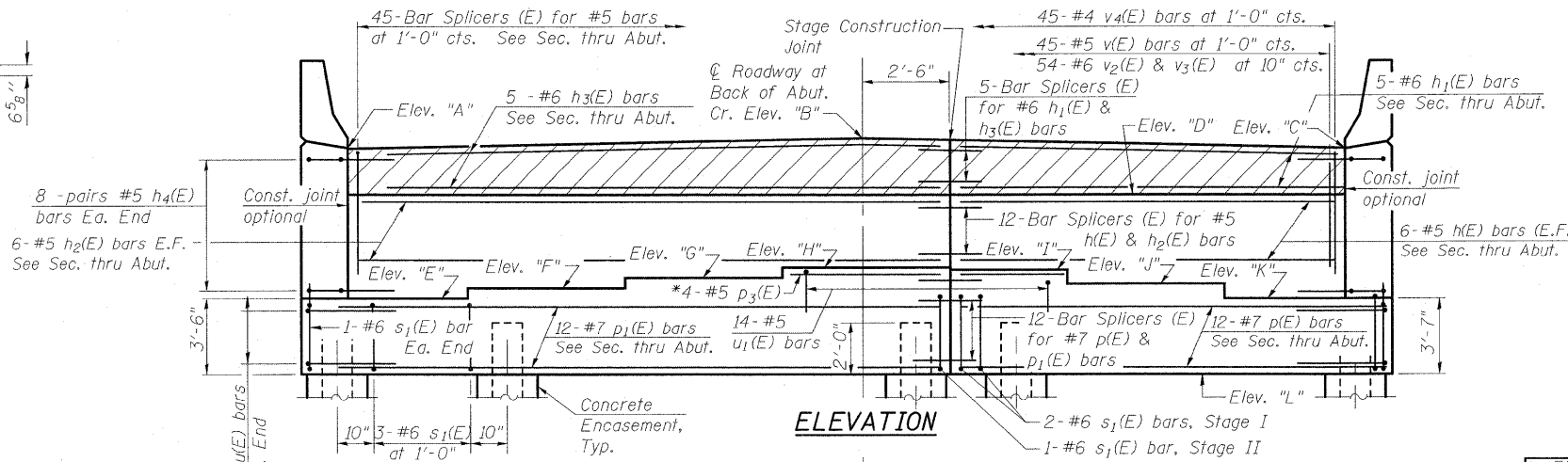


BAR v7(E)

PILE DATA

Type: HP 14x73
Nominal Required Bearing: 505K (E. Abut.)
361K (W. Abut.)
Factored Resistance Available: 252K (E. Abut.)
181K (W. Abut.)
Est. Length: (81' W. Abut., 60' E. Abut.)
No. Production Piles: 14 per Abut.
No. Test Piles: 1 per Abut.

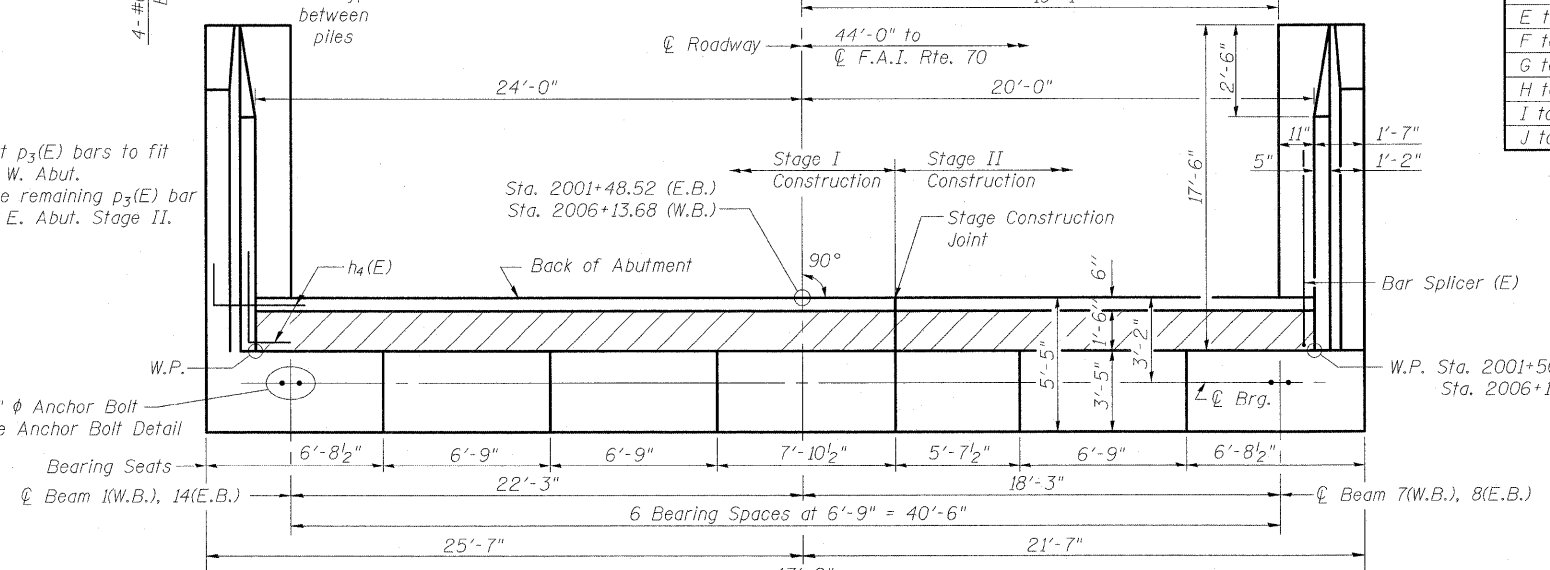
Notes:
Top of Pile Elev. = 518.81 W. Abut. &
518.83 E. Abut.
For Concrete Sealer application see
sheet 42 of 58.
E.F. indicates Each Face.
For Section thru Abutment and Wingwalls
see sheets 42 and 43 of 58.
For details of Bar Splicers, see sheet
49 of 58.
For details of piles and Concrete
Encasement, see sheet 50 of 58.



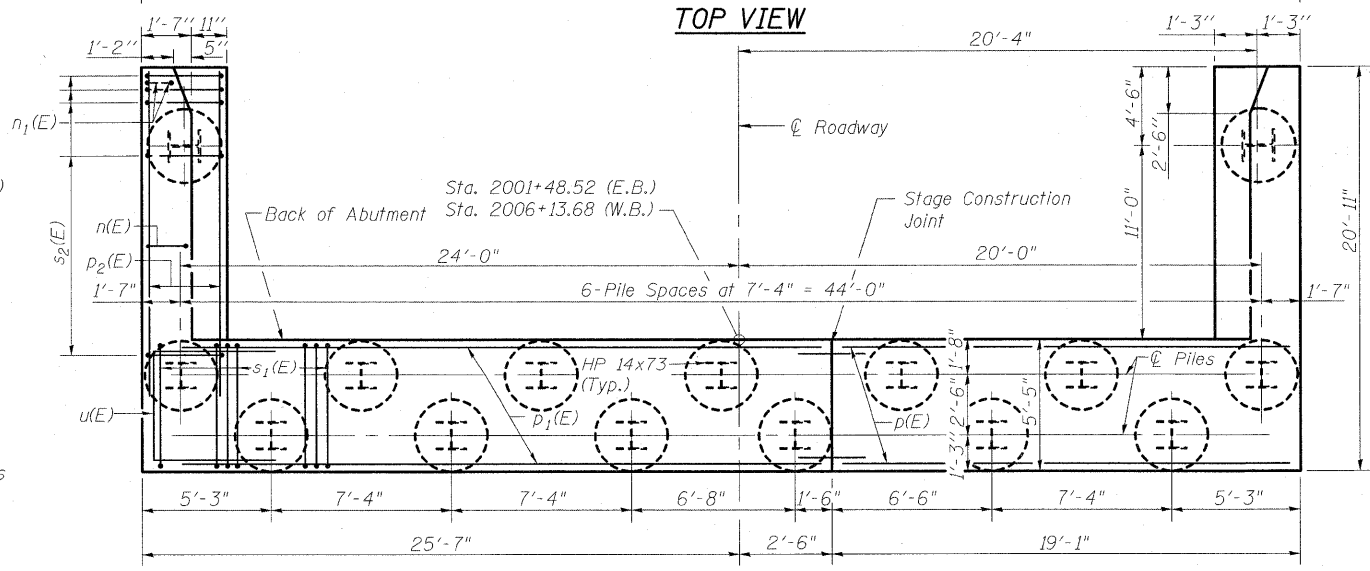
ELEVATION

* Cut p3(E) bars to fit
at W. Abut.
Use remaining p3(E) bar
at E. Abut. Stage II.

5/8" φ Anchor Bolt
see Anchor Bolt Detail



TOP VIEW



PLAN-PILE CAP

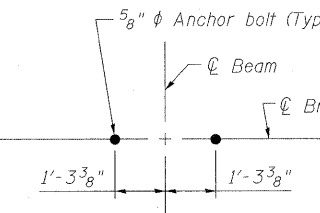
STEP HEIGHTS

Elev.	W. Abut.	E. Abut.
E to F	+1 3/4"	+1 5/8"
F to G	+1 3/4"	+1 3/8"
G to H	+1 1/2"	+1"
H to I	-1"	0"
I to J	-7/8"	-1 3/8"
J to K	-1 1/8"	-1 5/8"

**BILL OF MATERIAL
FOUR ABUTMENTS**

Bar	No.	Size	Length	Shape
h(E)	48	#5	17'-3"	—
h1(E)	20	#6	17'-3"	—
h2(E)	48	#5	26'-3"	—
h3(E)	20	#6	26'-3"	—
h4(E)	128	#5	8'-0"	└
h5(E)	104	#4	17'-3"	—
h6(E)	104	#4	17'-2"	—
n(E)	120	#6	11'-4"	┌
n1(E)	48	#6	5'-8"	┌
p(E)	48	#7	18'-10"	—
p1(E)	48	#7	27'-10"	—
p2(E)	48	#7	17'-8"	—
p3(E)	16	#5	13'-3"	—
s1(E)	152	#6	17'-10"	┌
s2(E)	144	#4	9'-5"	┌
u(E)	32	#6	9'-1"	┌
u1(E)	56	#5	7'-1"	┌
v(E)	180	#5	3'-1"	—
v2(E)	216	#6	7'-8"	—
v3(E)	216	#6	9'-0"	—
v4(E)	180	#4	2'-11"	└
v5(E)	144	#6	10'-7"	—
v6(E)	24	#6	10'-0"	—
v7(E)	120	#6	10'-9"	—
Structure Excavation		Cu. Yd.	1289	
Concrete Structures		Cu. Yd.	311.4	
Reinforcement Bars, Epoxy Coated		Pound	32680	
Furnishing Steel Piles, HP 14x73		Foot	3948	
Driving Piles		Foot	3948	
Test Pile, Steel HP 14x73		Each	4	
Concrete Encasement		Cu. Yd.	32.8	
Concrete Sealer		Sq. Ft.	2727	
Bar Splicers		Each	104	
Anchor Bolts, 5/8"		Each	56	

ANCHOR BOLT DETAIL



DESIGNED	B.B.
CHECKED	A.C.S.
DRAWN	W.J.S.
CHECKED	C.J.F. & B.B.



**BERNARDIN
LOCHMUELLER &
ASSOCIATES, INC.**

3 Oak Drive
Maryville, IL 62962-5635
Local: 618-288-4666
Fax: 618-288-4666

SHEET NO. 40 58 SHEETS	F.A.I. RTE. 70	SECTION (25-3)B	COUNTY EFFINGHAM	TOTAL SHEETS 1416	SHEET NO. 72
	SN 025-017 & 025-0108			CONTRACT NO. 74296	
FED. ROAD DIST. NO. 7 ILLINOIS FED. AID PROJECT 70					