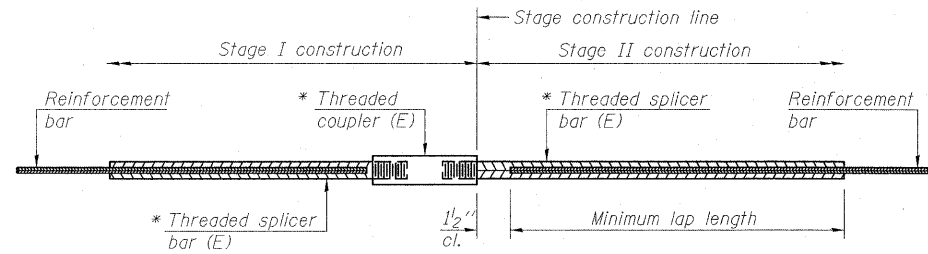


STATE OF ILLINOIS  
DEPARTMENT OF TRANSPORTATION



STANDARD BAR SPLICER ASSEMBLY

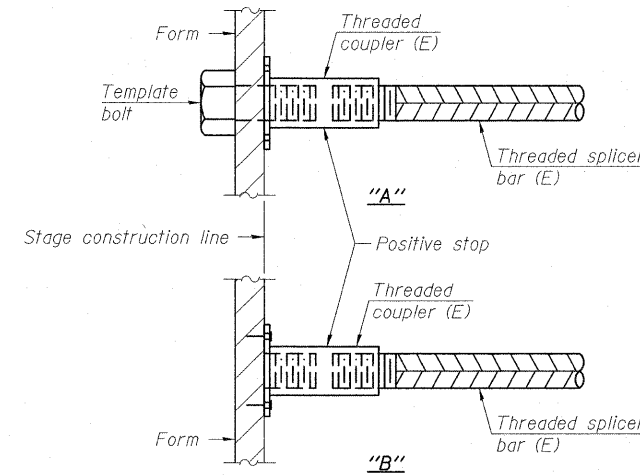
Bar size to be spliced	Minimum Lap Lengths			
	Table 1	Table 2	Table 3	Table 4
3, 4	1'-5"	1'-11"	2'-1"	2'-4"
5	1'-9"	2'-5"	2'-7"	2'-11"
6	2'-1"	2'-11"	3'-1"	3'-6"
7	2'-9"	3'-10"	4'-2"	4'-8"
8	3'-8"	5'-1"	5'-5"	6'-2"
9	4'-7"	6'-5"	6'-10"	7'-9"

Table 1: Black bar, 0.8 Class C  
Table 2: Black bar, Top bar lap, 0.8 Class C  
Table 3: Epoxy bar, 0.8 Class C  
Table 4: Epoxy bar, Top bar lap, 0.8 Class C

Threaded splicer bar length = min. lap length + 1/2" + thread length

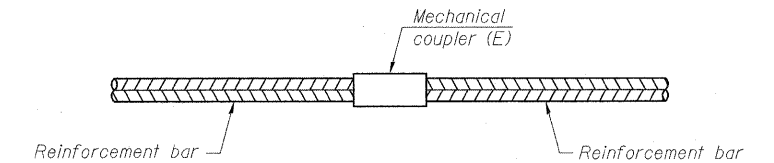
\* Epoxy not required on Bar Splicer Assembly components used in conjunction with black bars.

Location	Bar size	No. assemblies required	Table for minimum lap length
Bridge Deck	#5	2690	3
Approach Slab	#4	100	3
Approach Slab	#5	344	3
Abutment Diaphragm	#5	4	3
Abutments	#5	56	3
Abutments Hatch Block	#6	20	3
Abutments	#7	48	3
Piers 1 & 4	#4	64	3
Piers 1 & 4	#5	12	3
Piers 1 & 4	#7	28	3
Piers 2 & 3	#4	200	3
Piers 2 & 3	#5	16	3
Piers 2 & 3	#7	40	3
Piers 2 & 3 Footing	#5	40	3
Piers 2 & 3 Footing	#5	56	4



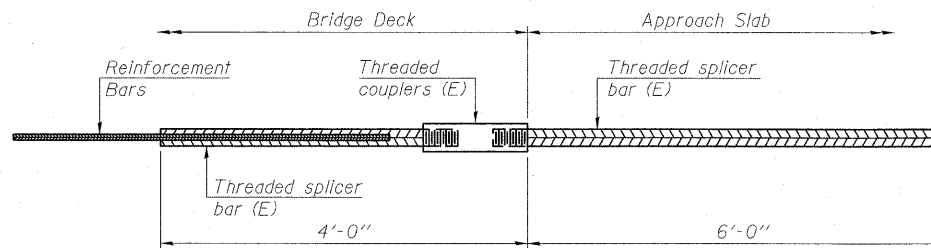
INSTALLATION AND SETTING METHODS

"A": Set bar splicer assembly by means of a template bolt.  
"B": Set bar splicer assembly by nailing to wood forms or cementing to steel forms.  
(E) : Indicates epoxy coating.



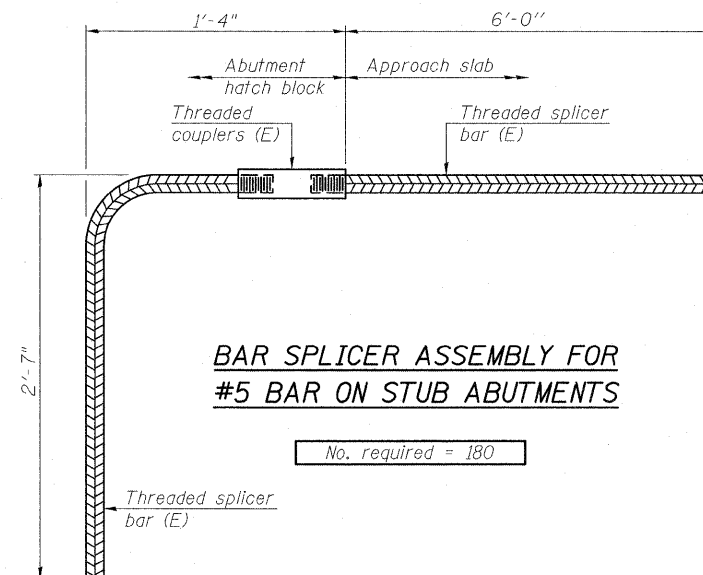
STANDARD MECHANICAL SPLICER

Location	Bar size	No. assemblies required
Abutment Diaphragm	#6	12
Pier Diaphragm	#6	16
Pier Diaphragm	#4	80
Piers 1 & 4	#4	192
Piers 2 & 3	#4	384
Piers 2 & 3	#9	864



BAR SPLICER ASSEMBLY FOR #5 BAR ON INTEGRAL OR SEMI-INTEGRAL ABUTMENTS

No. required =



BAR SPLICER ASSEMBLY FOR #5 BAR ON STUB ABUTMENTS

No. required = 180

NOTES

Splicer bars shall be deformed with threaded ends and have a minimum 60 ksi yield strength.  
All reinforcement shall be lapped and tied to the splicer bars.  
Bar splicer assemblies shall be epoxy coated according to the requirements for reinforcement bars. See Section 508 of the Standard Specifications.  
See special provision for Mechanical Splicers.  
See approved list of bar splicer assemblies and mechanical splicers for alternatives.

BAR SPLICER ASSEMBLY AND MECHANICAL SPLICER DETAILS  
S.N. 025-0107 & 025-0108

DESIGNED	
CHECKED	
DRAWN	W.J.S.
CHECKED	C.J.F. & B.B.

BSD-1

11-1-09



BERNARDIN  
LOCHMUELLER &  
ASSOCIATES, INC.

3 Oak Drive  
Maryville, IL 62062-5635  
Local (618) 258-4955  
Fax 618-288-4666

SHEET NO. 49 58 SHEETS	F.A.I. RTE.	SECTION	COUNTY	TOTAL SHEETS	SHEET NO.
	70	(25-3)B	EFFINGHAM	1416	81
		SN 025-0107 & 025-0108		CONTRACT NO. 74296	
FED. ROAD DIST. NO. 7 [ILLINOIS] FED. AID PROJECT 70					