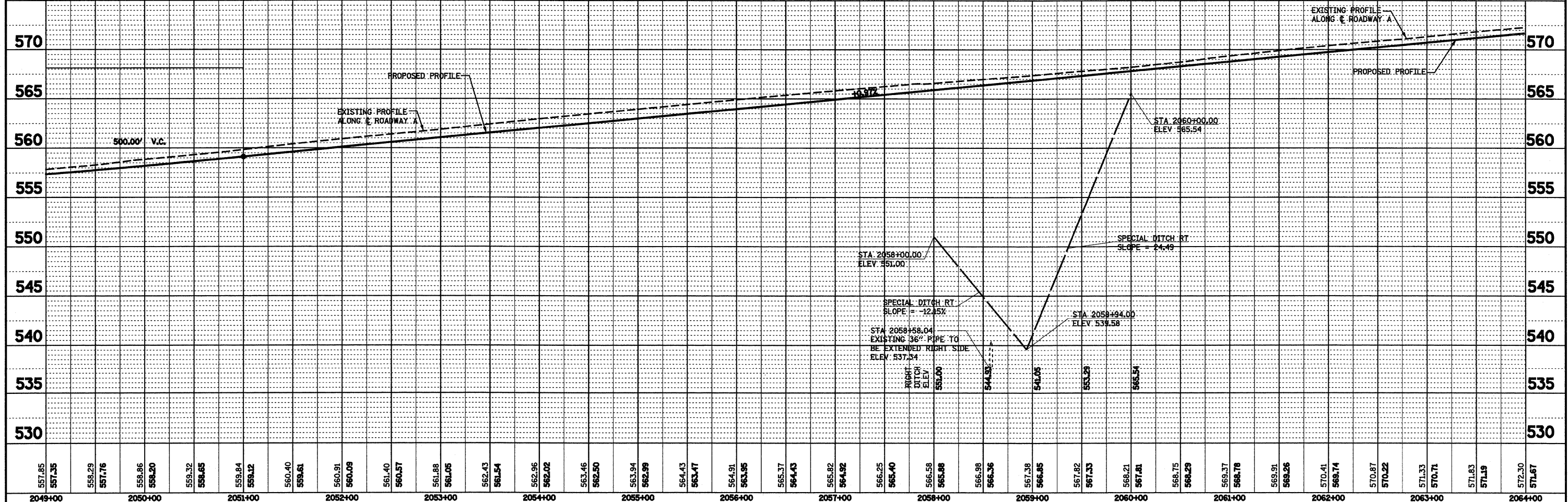
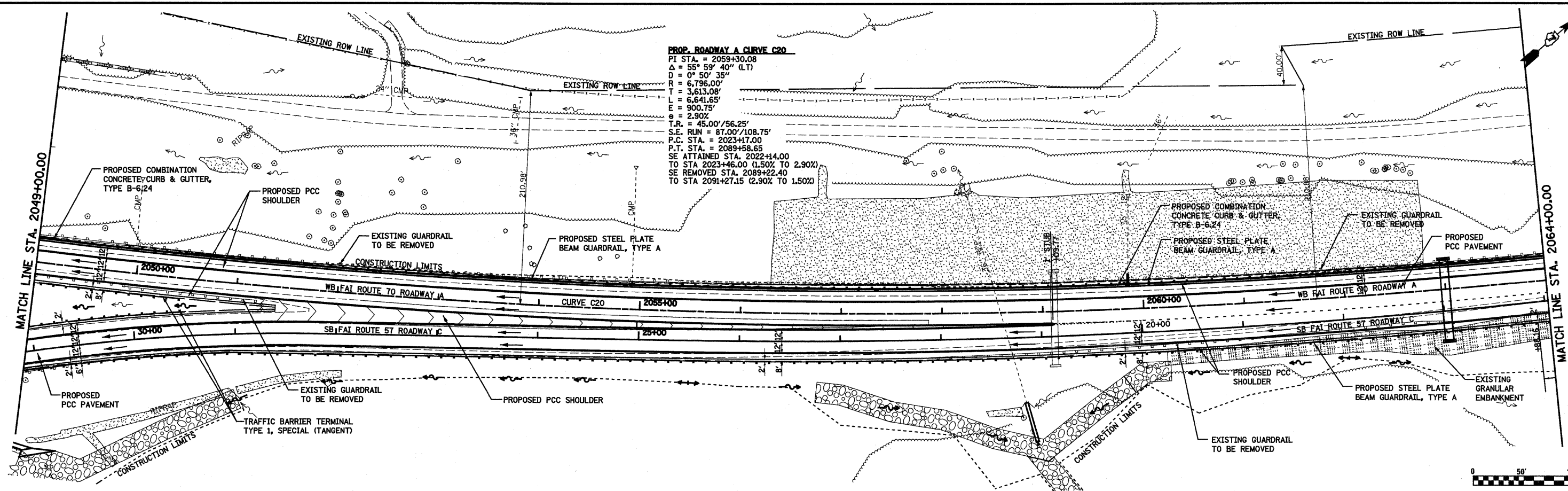


DATE	
BY	
PLANNED	
CHECKED	
BY	
DATE	
NO.	
FILE NAME	

DATE	
BY	
PLANNED	
CHECKED	
BY	
DATE	
NO.	
FILE NAME	

**PROP. ROADWAY A CURVE C20**  
 PI STA. = 2059+30.08  
 Δ = 55° 59' 40" (LT)  
 D = 0° 50' 35"  
 R = 6,796.00'  
 T = 3,613.08'  
 L = 6,641.65'  
 E = 900.75'  
 θ = 2.90%  
 T.R. = 45.00'/56.25'  
 S.E. RUN = 87.00'/108.75'  
 P.C. STA. = 2023+17.00  
 P.T. STA. = 2089+58.65  
 SE ATTAINED STA. 2022+14.00  
 TO STA 2023+46.00 (1.50% TO 2.90%)  
 SE REMOVED STA. 2089+22.40  
 TO STA 2091+27.15 (2.90% TO 1.50%)



FILE NAME =	USER NAME = paul	DESIGNED - JWS	REVISED -	<b>STATE OF ILLINOIS</b> <b>DEPARTMENT OF TRANSPORTATION</b> <b>PLAN AND PROFILE, SOUTH TRI LEVEL ROADWAY A</b>	F.A.I. RTE.	SECTION	COUNTY	TOTAL SHEETS	SHEET NO.
SVProject\03\007\257-70.dwg		DRAWN - PDB	REVISED -		57/70	(25-3)R	EFFINGHAM	1416	183
		CHECKED - BRM	REVISED -		CONTRACT NO. 74296				
		DATE - 2-25-08	REVISED -		FED. ROAD DIST. NO. [ILLINOIS] FED. AID PROJECT				