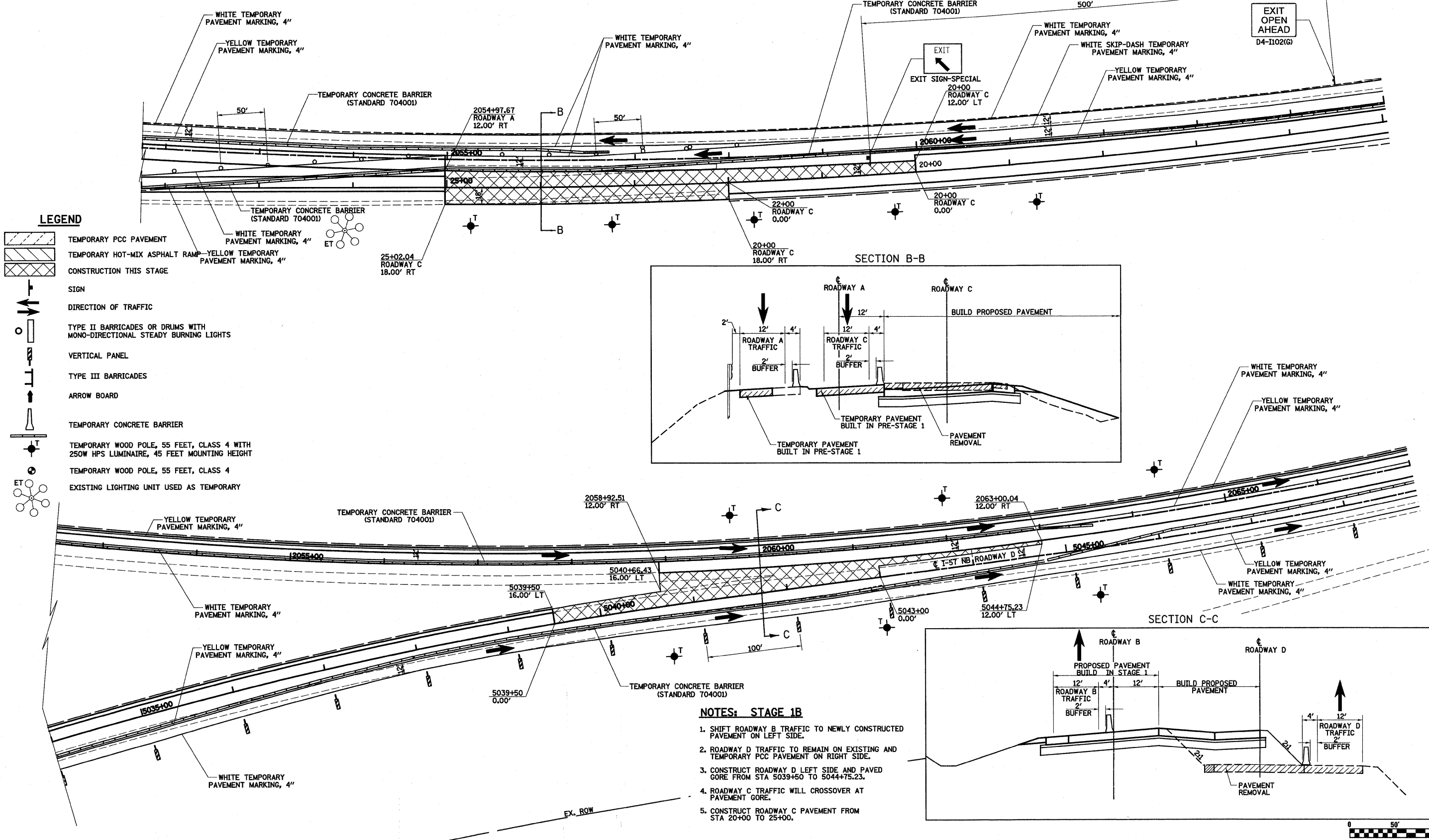
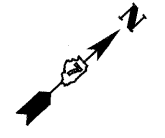


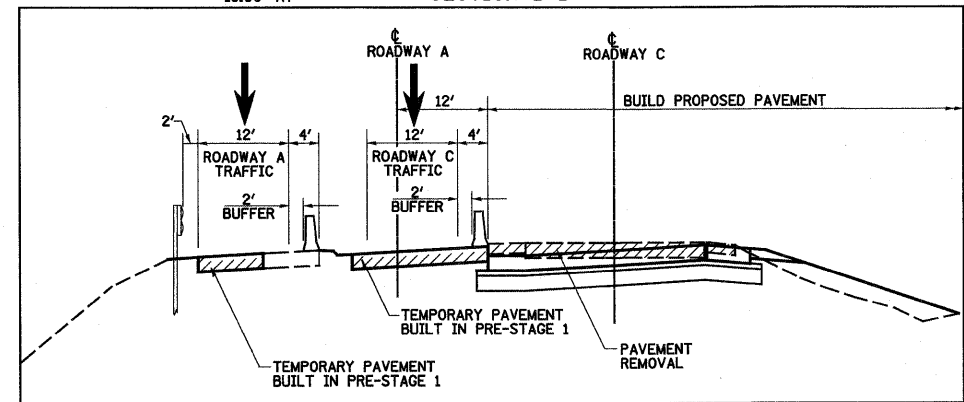
STAGE 1B



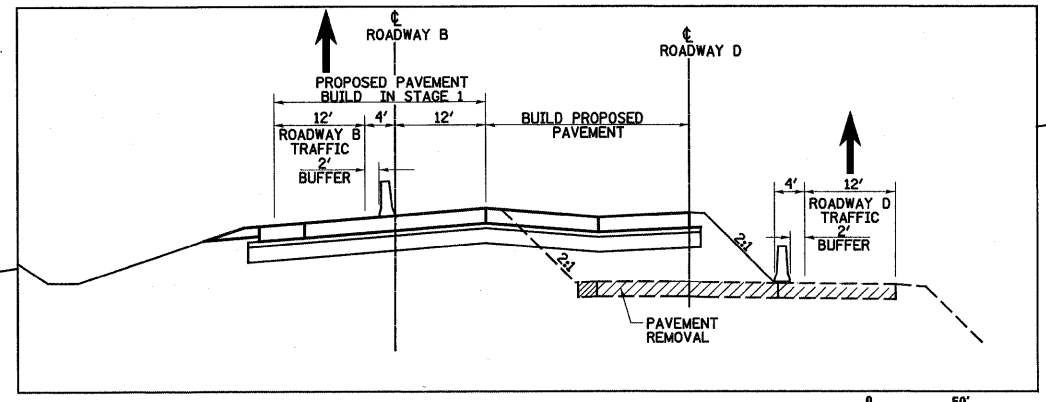
LEGEND

- TEMPORARY PCC PAVEMENT
- TEMPORARY HOT-MIX ASPHALT RAMP
- CONSTRUCTION THIS STAGE
- SIGN
- DIRECTION OF TRAFFIC
- TYPE II BARRICADES OR DRUMS WITH MONO-DIRECTIONAL STEADY BURNING LIGHTS
- VERTICAL PANEL
- TYPE III BARRICADES
- ARROW BOARD
- TEMPORARY CONCRETE BARRIER
- TEMPORARY WOOD POLE, 55 FEET, CLASS 4 WITH 250W HPS LUMINAIRE, 45 FEET MOUNTING HEIGHT
- TEMPORARY WOOD POLE, 55 FEET, CLASS 4
- EXISTING LIGHTING UNIT USED AS TEMPORARY

SECTION B-B

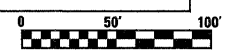


SECTION C-C



NOTES: STAGE 1B

1. SHIFT ROADWAY B TRAFFIC TO NEWLY CONSTRUCTED PAVEMENT ON LEFT SIDE.
2. ROADWAY D TRAFFIC TO REMAIN ON EXISTING AND TEMPORARY PCC PAVEMENT ON RIGHT SIDE.
3. CONSTRUCT ROADWAY D LEFT SIDE AND PAVED GORE FROM STA 5039+50 TO 5044+75.23.
4. ROADWAY C TRAFFIC WILL CROSSOVER AT PAVEMENT GORE.
5. CONSTRUCT ROADWAY C PAVEMENT FROM STA 20+00 TO 25+00.



FILE NAME =	USER NAME = paul	DESIGNED - JWS	REVISED -	STATE OF ILLINOIS DEPARTMENT OF TRANSPORTATION	MAINTENANCE OF TRAFFIC, STAGE 1B, SOUTH TRI LEVEL	F.A.I. RTE. 57/70	SECTION (25-3)R	COUNTY EFFINGHAM	TOTAL SHEETS 1416	SHEET NO. 230		
PLOT SCALE = 1/8"=100' / IN.	PLOT DATE = 3/18/2010	DRAWN - LEC	REVISED -			SCALE: 1"=50'	SHEET NO. 2 OF 2 SHEETS	STA. 2052+50.00 TO STA. 2067+00.00	CONTRACT NO. 74296			
		CHECKED - BRM	REVISED -									
		DATE - 2-29-08	REVISED -									