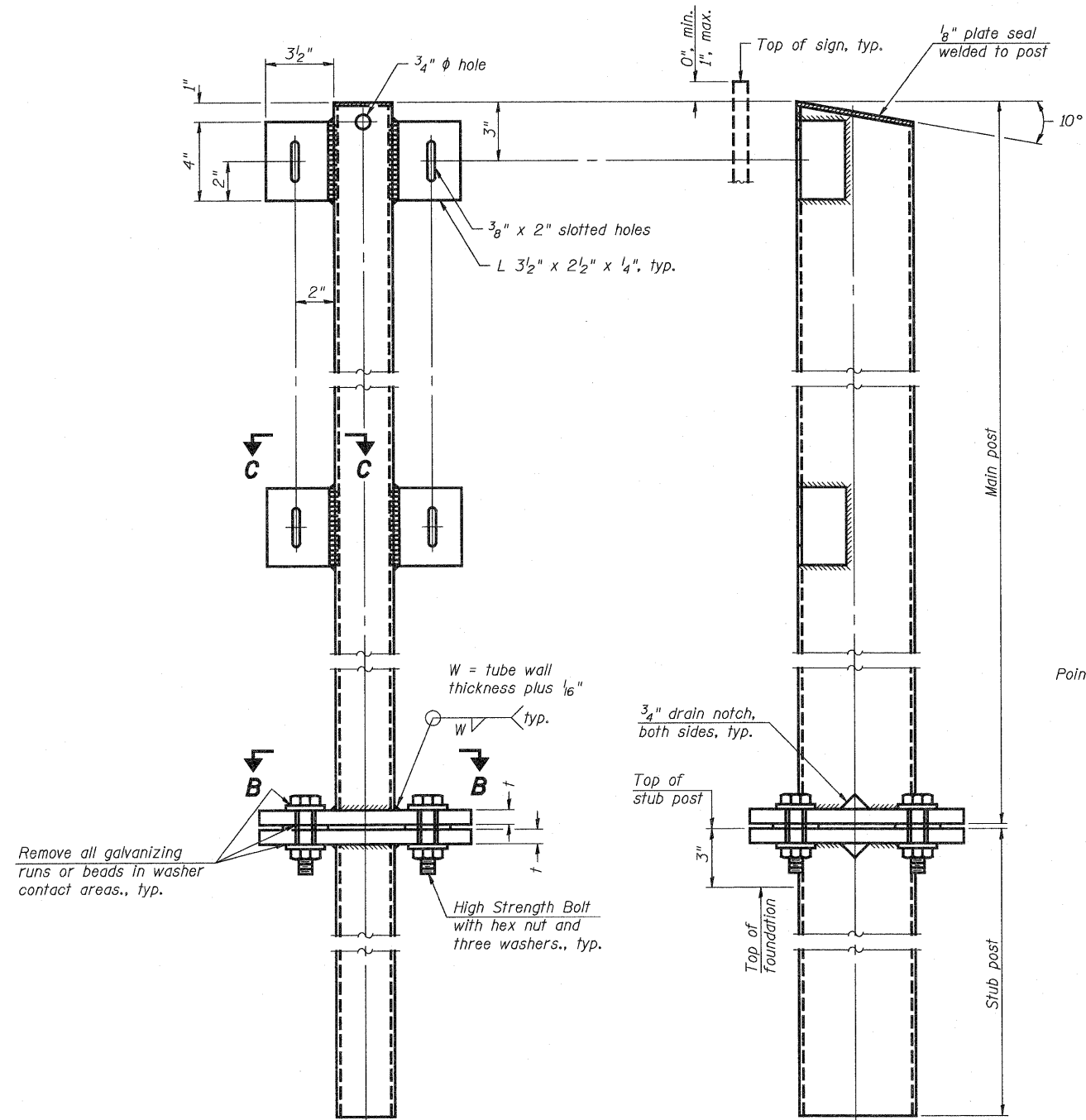


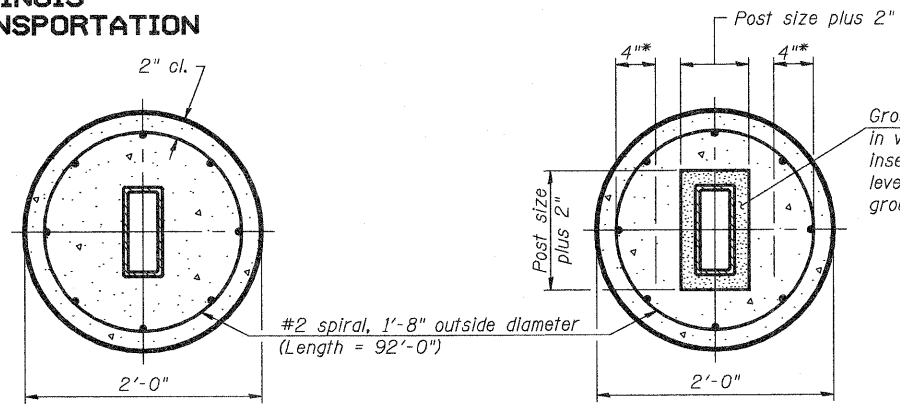
STATE OF ILLINOIS
DEPARTMENT OF TRANSPORTATION



FRONT ELEVATION

SIDE ELEVATION

MAIN POST & STUB POST

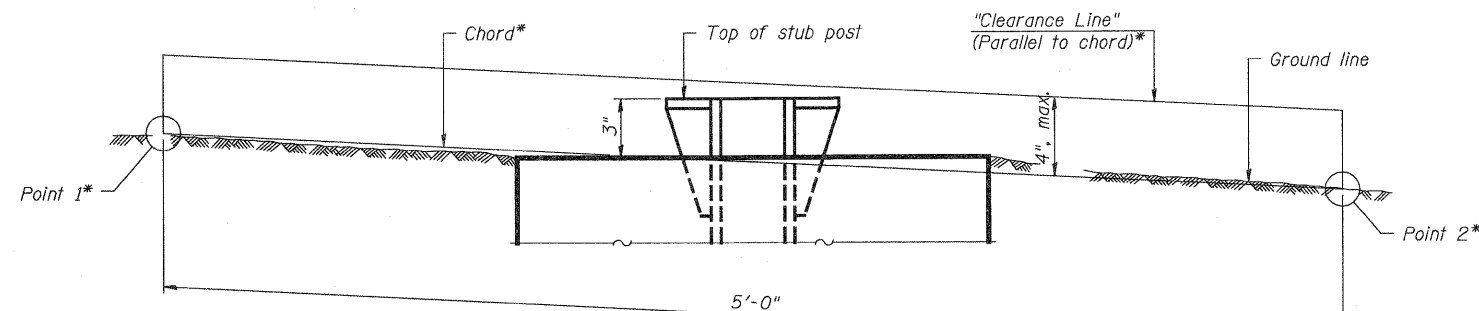


SECTION A-A
(CAST-IN-PLACE)

OR

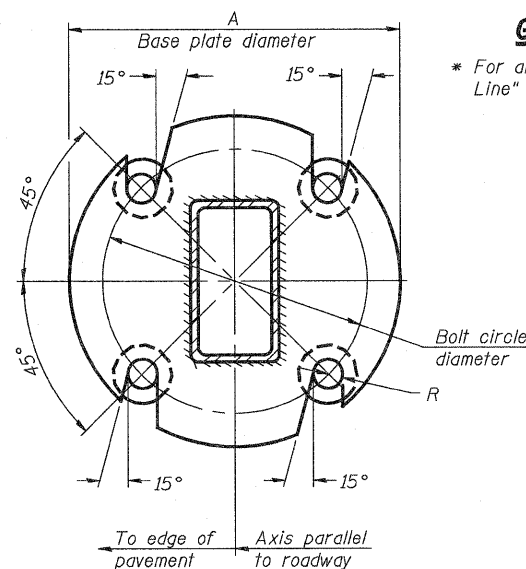
SECTION A-A
(PRECAST)

* Hot dip galvanized lifting loops or inserts may be placed in precast foundation inside the spiral reinforcement but not within 6" of the long axis of the post. Inserts must be adequate for safely lifting a total of 3,000 pounds and must not interfere with installation of the stub post or proper functioning of the slip base.

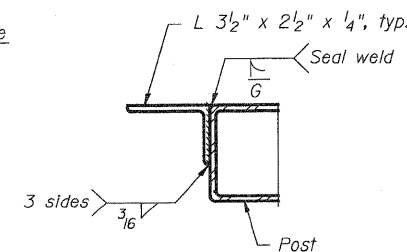


ELEVATION
GROUND LINE & STUB POST

* For all "Point 1" and "Point 2" locations, "Clearance Line" must be at or above top of stub post.

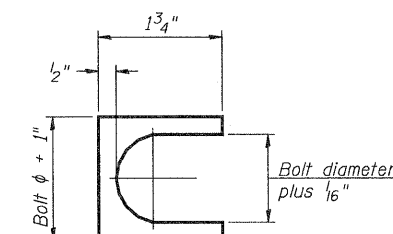


SECTION B-B



SECTION C-C

Weld continuously around corners.



SHIM DETAIL

Furnish two 0.01" thick and two 0.03" thick stainless steel or brass (ASTM B36) shims per post.

DESIGNED	ESW
CHECKED	JWS
DRAWN	PDB
CHECKED	BRM

BAT-A-2

12-1-08

NUMBER	REVISION	DATE

BREAK-AWAY TUBULAR STEEL
SIGN POSTS AND DETAILS

SHEET NO. 33	F.A.I. RTE.	SECTION	COUNTY	TOTAL SHEETS	SHEET NO.
	57/70	(25-3)R	EFFINGHAM	1416	385
SHEETS 33	CONTRACT NO. 74296				
FED. ROAD DIST. NO.		ILLINOIS FED. AID PROJECT			