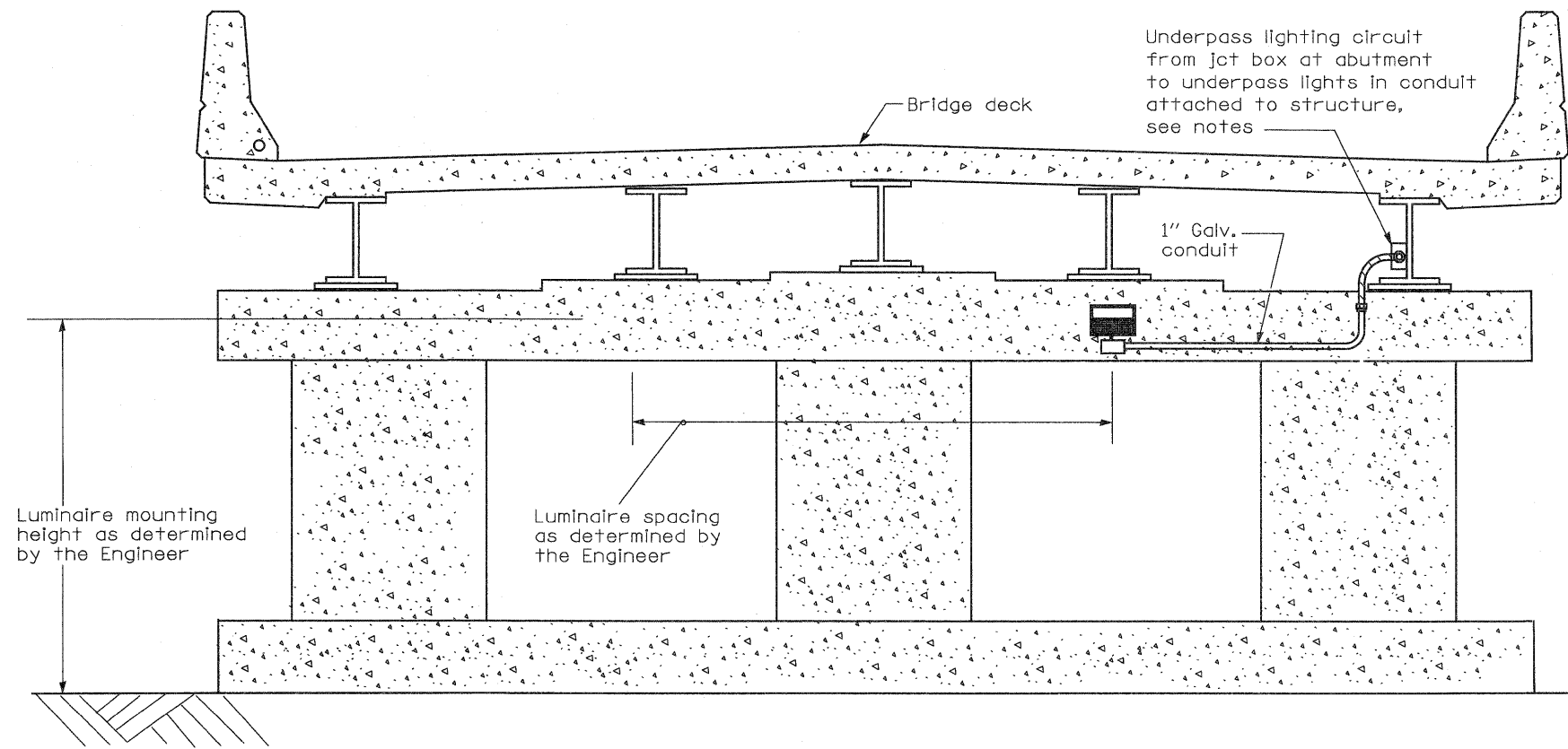


OVERPASS ELEVATION
(Not to Scale)



Section A-A
(Underpass Lighting on Pier)

GENERAL NOTES

Conduit and wiring from junction box at bridge abutment or parapet mounted pole to the underpass luminaire(s) shall be incidental to the cost of the underpass luminaire(s). This includes all appurtenances including, but not limited to; straps, clamps, hangers, fittings, attachments, hardware, junction boxes, etc.

Conduit attached to structure shall be rigid galvanized conduit unless noted otherwise. All hardware shall be stainless steel and all conduit appurtenances, as noted above, shall be hot dip galvanized or stainless steel.

A stainless steel junction box and flex conduit shall be installed in the conduit at any opening in the bridge deck where road salt can run down onto the conduit system. Routing and method of attachment of the conduit on the bridge structure and across piers shall be as approved by the Engineer.

FILE NAME =	USER NAME = paul	DESIGNED -	REVISED - 04-26-10	STATE OF ILLINOIS DEPARTMENT OF TRANSPORTATION	UNDERPASS LIGHTING, OUTSIDE PIERS, SOUTH TRI LEVEL	F.A.I. RTE.	SECTION	COUNTY	TOTAL SHEETS	SHEET NO.	
St\Projects\403-00072.51-70\den\S Tri LV Lighting detail.dgn		DRAWN -	REVISED -			57/70	(25-3)I-6	EFFINGHAM	1416	421	
PLOT SCALE = 40.0000' / IN.		CHECKED -	REVISED -			SCALE: SHEET NO. 32 OF 34 SHEETS STA. TO STA.		CONTRACT NO. 74293			
PLOT DATE = 4/27/2010		DATE -	REVISED -			FED. ROAD DIST. NO. ILLINOIS FED. AID PROJECT					