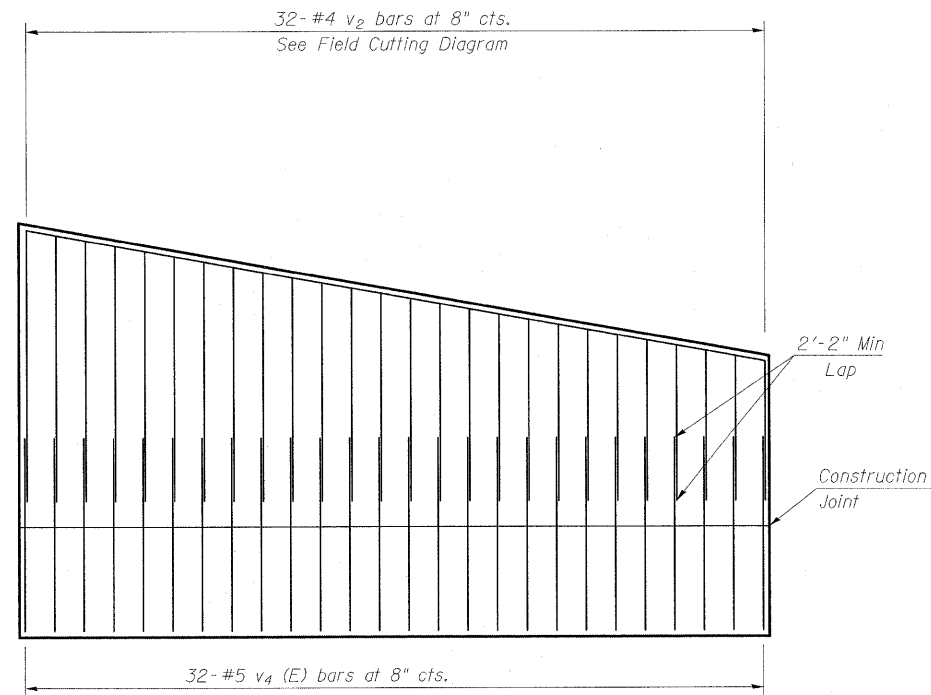
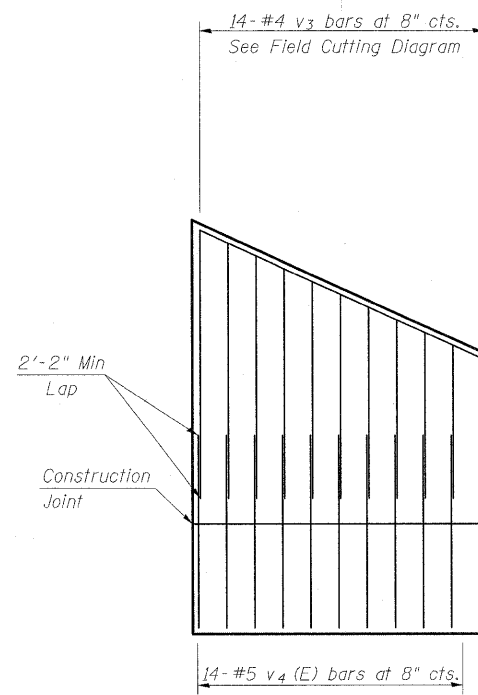


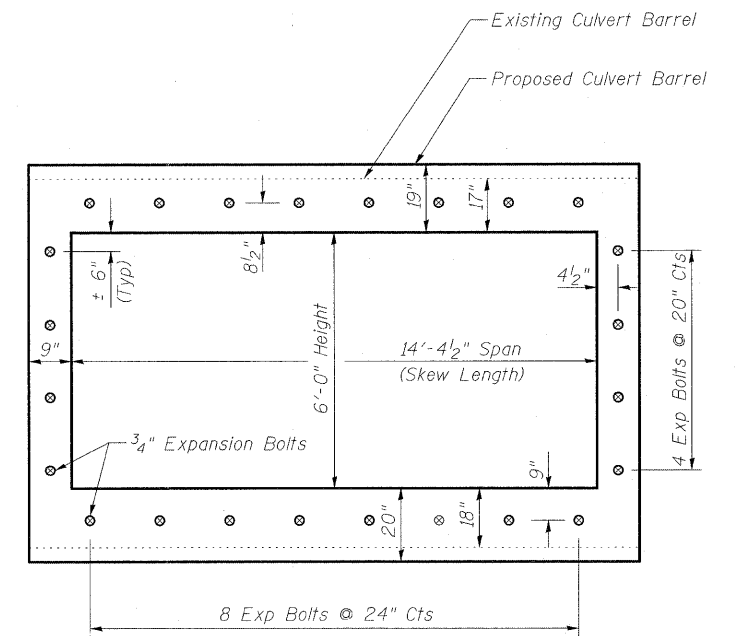
STATE OF ILLINOIS
DEPARTMENT OF TRANSPORTATION



**LONG WING
SHOWING REINFORCEMENT**

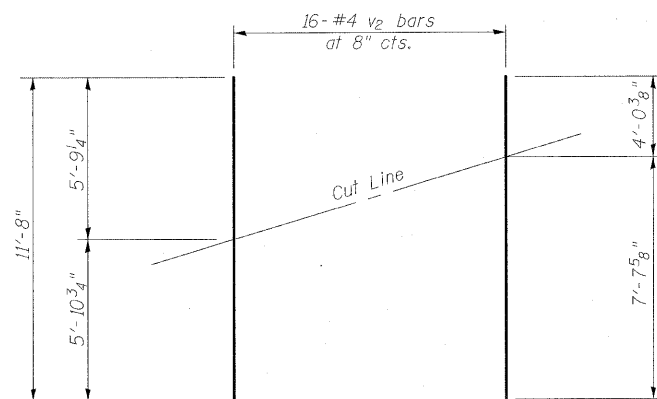


**SHORT WING
SHOWING REINFORCEMENT**



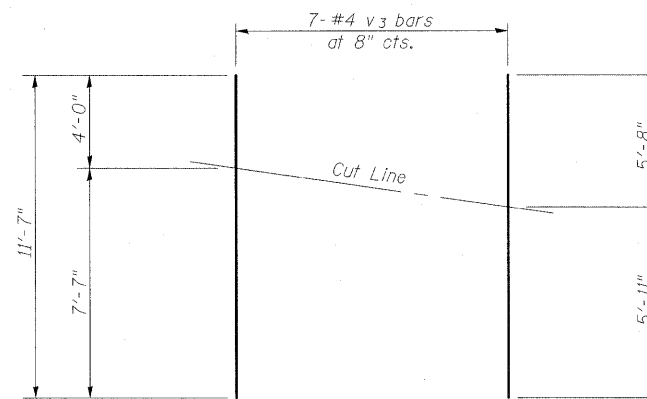
Note - Expansion Bolts shall be 3/4" hooked bolts. Hooked bolts shall extend a minimum of 9" into the new concrete

EXPANSION BOLT LAYOUT



**FIELD CUTTING DIAGRAM
(v2 bars)**

**FIELD CUTTING AND
PLACEMENT DIAGRAMS**



**FIELD CUTTING DIAGRAM
(v3 bars)**

Order v2 & v3 bars full length. Cut as shown. Use remainder of bar in opposite end of Wing Wall.



**BERNARDIN
LOCHMUELLER &
ASSOCIATES, INC.**

3 Oak Drive
Maryville, IL 62962-4635
Local-(618) 288-4665
Fax 618-288-4666

**BOX CULVERT DETAILS
RT STA 11+18.70
RAMP F WB**

DESIGNED -	ACS
CHECKED -	CJF
DRAWN -	RCB
CHECKED -	CJF

Revised Sheet 5/21/10 CJF

SHEET NO. 3 OF 3 SHEETS	F.A.I. RTE.	SECTION	COUNTY	TOTAL SHEETS	SHEET NO.
	57/70	(25-3)R	EFFINGHAM	1416	455
			CONTRACT NO. 74296		
FED. ROAD DIST. NO.		ILLINOIS FED. AID PROJECT			