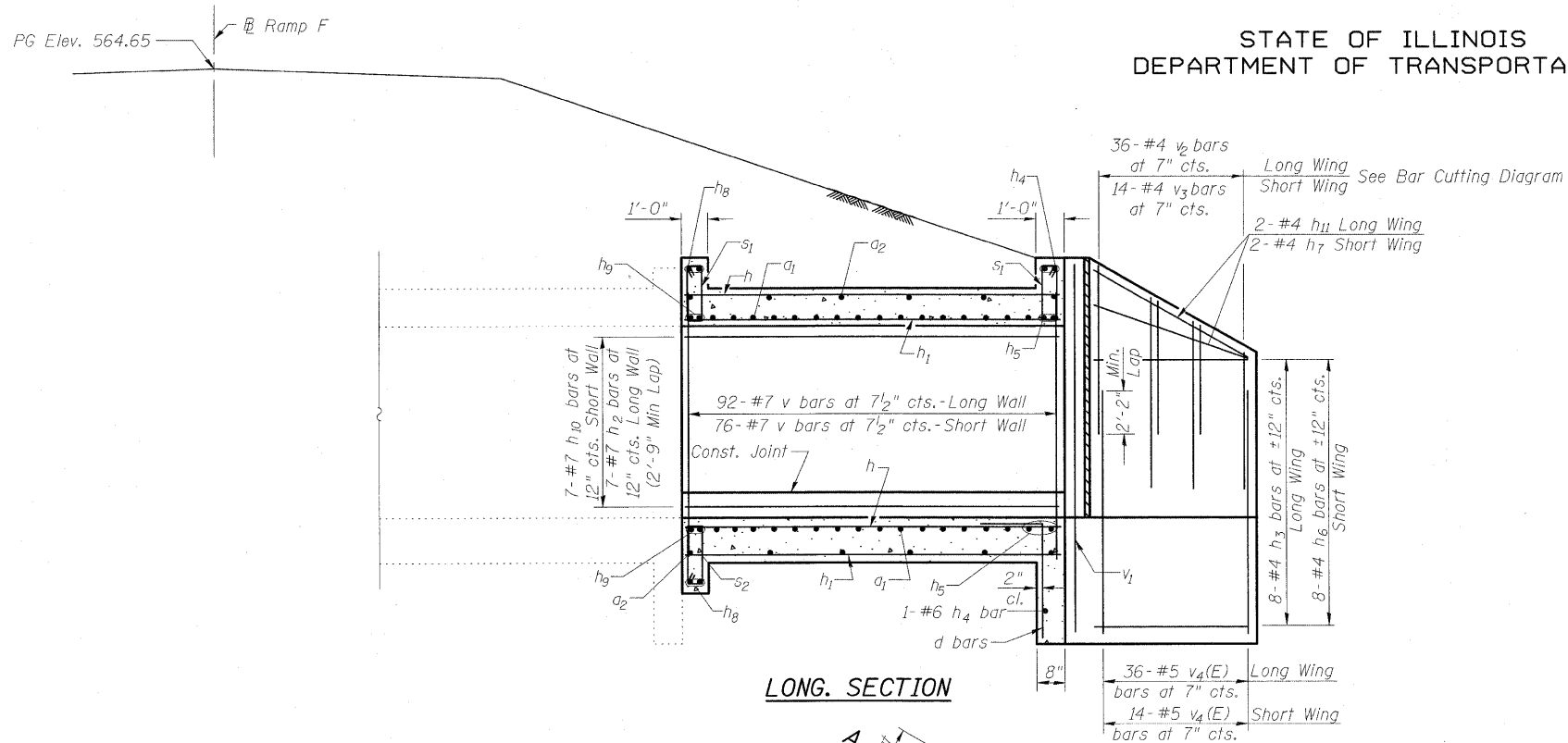
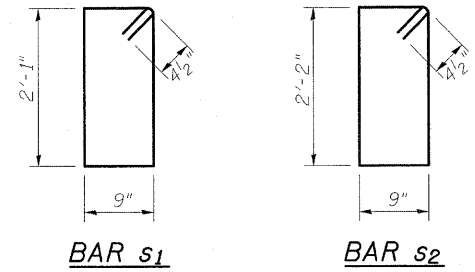


STATE OF ILLINOIS
DEPARTMENT OF TRANSPORTATION

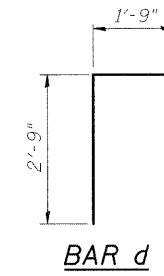


LONG SECTION

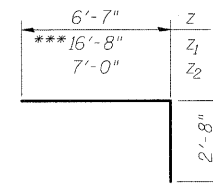


BAR s1

BAR s2

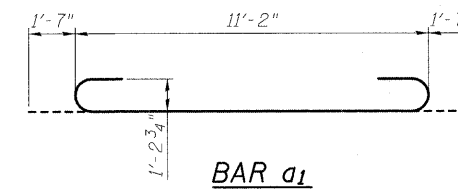


BAR d



BAR z & z1

*** Longest length required - 16'-8"
Field cut remaining bars to fit

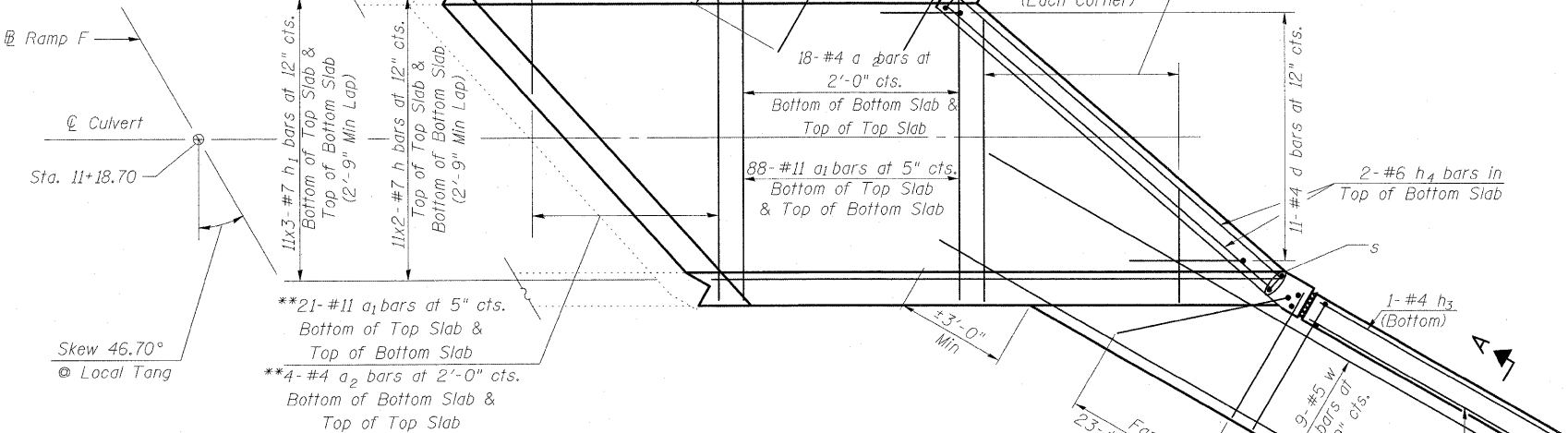


BAR a1

BILL OF MATERIAL

| Bar | No. | Size | Length | Shape |
|---|-----|---------|---------|-------|
| a1 | 302 | #11 | 14'-4" | U |
| a2 | 60 | #4 | 11'-2" | U |
| d | 11 | #4 | 4'-6" | U |
| h | 44 | #7 | 29'-9" | — |
| h1 | 66 | #7 | 20'-9" | — |
| h2 | 7 | #7 | 56'-8" | — |
| h3 | 8 | #4 | 20'-2" | — |
| h4 | 3 | #6 | 22'-0" | — |
| h5 | 6 | #9 | 22'-0" | — |
| h6 | 8 | #4 | 7'-8" | — |
| h7 | 2 | #4 | 8'-5" | — |
| h8 | 4 | #6 | 13'-7" | — |
| h9 | 6 | #7 | 13'-7" | — |
| h10 | 7 | #7 | 46'-9" | — |
| h11 | 2 | #4 | 20'-5" | — |
| s | 37 | #4 | 6'-5" | U |
| s1 | 14 | #4 | 6'-7" | U |
| v | 168 | #7 | 8'-11" | — |
| v1 | 4 | #7 | 11'-0" | — |
| v2 | 18 | #4 | 11'-8" | — |
| v3 | 7 | #4 | 11'-7" | — |
| v4(E) | 50 | #5 | 6'-0" | — |
| w | 9 | #5 | 39'-11" | — |
| w1 | 9 | #5 | 13'-7" | — |
| z | 50 | #7 | 9'-3" | — |
| z1 | 23 | #7 | 19'-4" | — |
| z2 | 4 | #7 | 9'-8" | — |
| Concrete Box Culverts | | Cu. Yd. | 105.8 | |
| Reinforcement Bars, Epoxy Coated | | Pound | 320 | |
| Reinforcement Bars | | Pound | 37350 | |
| 3/4" Expansion Bolts | | Each | 24 | |
| Concrete Removal | | Cu. Yd. | 7.2 | |
| Removal & Disposal of Unsuitable Material | | Cu. Yd. | 70 | |
| Rockfill-Replacement | | Ton | 147 | |

** a1 & a2 bars in skew portion of slab shall be ordered full length & cut to fit.



SHOWING REINFORCEMENT

PLAN

| | |
|------------|-----|
| DESIGNED - | ACS |
| CHECKED - | CJF |
| DRAWN - | RCB |
| CHECKED - | CJF |

Revised Sheet 5/21/10 CJF

Notes:
Bars indicated thus 11 x 2-#8 etc. indicates 11 lines of bars with 2 lengths per line.
For Section A-A, see Sheet 1 of 3.

BOX CULVERT DETAILS
LT STA 11+18.70
RAMP F WB



BERNARDIN
LOCHMUELLER &
ASSOCIATES, INC.

8 Oak Drive
Maryville, IL 62902-6635
Local (618) 288-4995
Fax 618-288-4666

| | | | | | |
|----------------------------|---------------|---------|--------------------|------------------|--------------|
| SHEET NO. 2 OF 3 SHEETS | F.A.I RTE. | SECTION | COUNTY | TOTAL SHEETS | SHEET NO. |
| | 57/70 | (25-3)R | EFFINGHAM | 1416 | 457 |
| FED. ROAD DIST. NO. | | | ILLINOIS | FED. AID PROJECT | |
| | | | CONTRACT NO. 74296 | | |