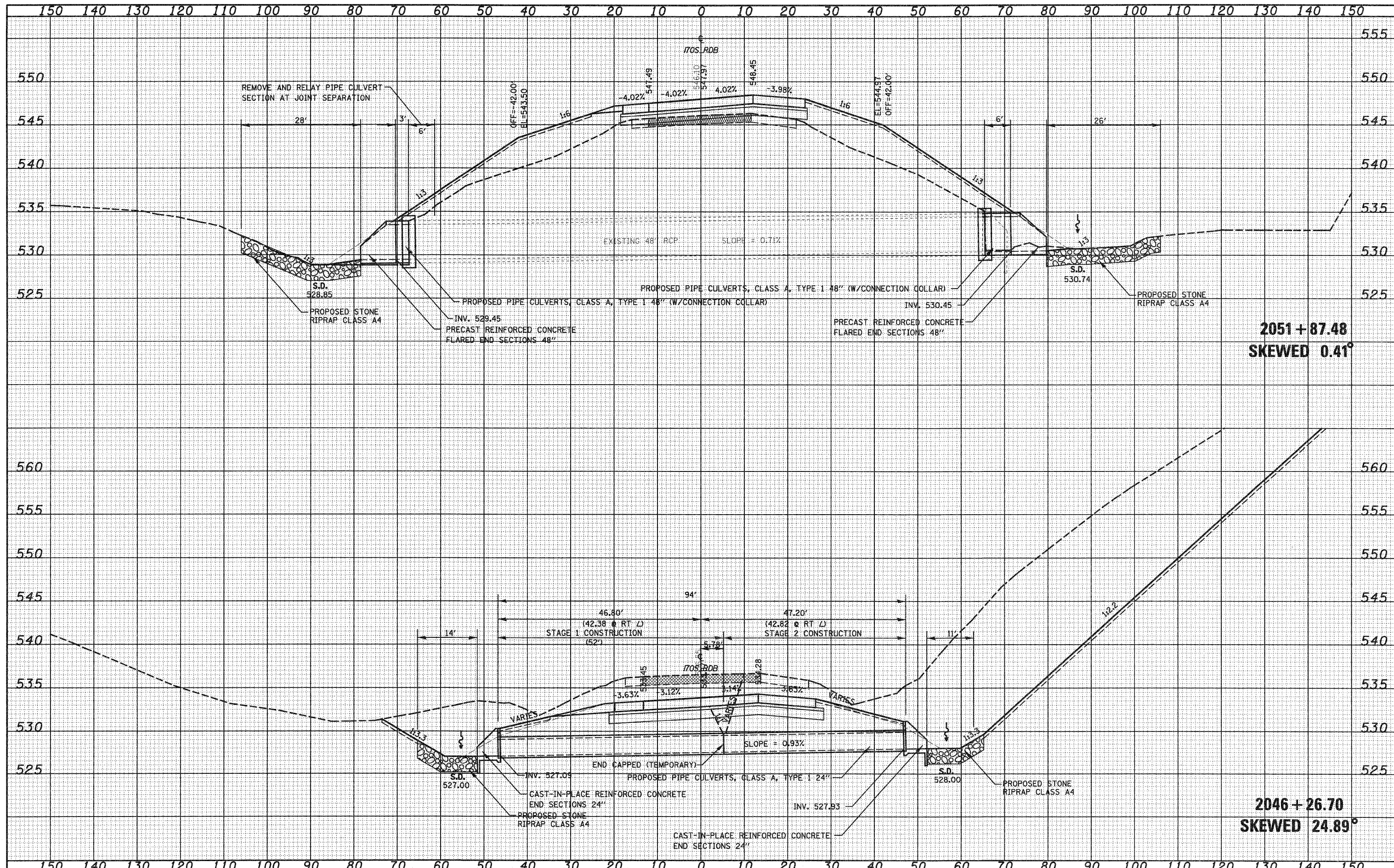


DATE	
BY	
FINAL SURVEY	
SURVEY PLOTTED	
TEMPLATE	
NOTE BOOK	
AREAS CHECKED	
NO.	

DATE	
BY	
ORIGINAL SURVEY	
SURVEY PLOTTED	
TEMPLATE	
NOTE BOOK	
AREAS CHECKED	
NO.	



2051+87.48
SKewed 0.41°

2046+26.70
SKewed 24.89°

FILE NAME =	USER NAME = paul	DESIGNED - JWS	REVISED -	STATE OF ILLINOIS DEPARTMENT OF TRANSPORTATION	CULVERT PROFILES, SOUTH TRI LEVEL ROADWAY B	F.A.J. RTE.	SECTION	COUNTY	TOTAL SHEETS	SHEET NO.	
SAProject\MG\007257\7ndy5\TriLevelCulvert\300.dgn	PLOT SCALE = 28,00000 ' / IN.	DRAWN - LEC	REVISED -			57/70	(25-3)R	EFFINGHAM	1416	484	
PLOT DATE = 2/11/2010	DATE - 2-25-08	CHECKED - BRM	REVISED -			SCALE: 1"=10'		SHEET NO. 9 OF 17 SHEETS		STA. 2046+26.70 TO STA. 2051+87.48	
		DATE - 2-25-08	REVISED -			FED. ROAD DIST. NO.		ILLINOIS FED. AID PROJECT		CONTRACT NO. 74296	