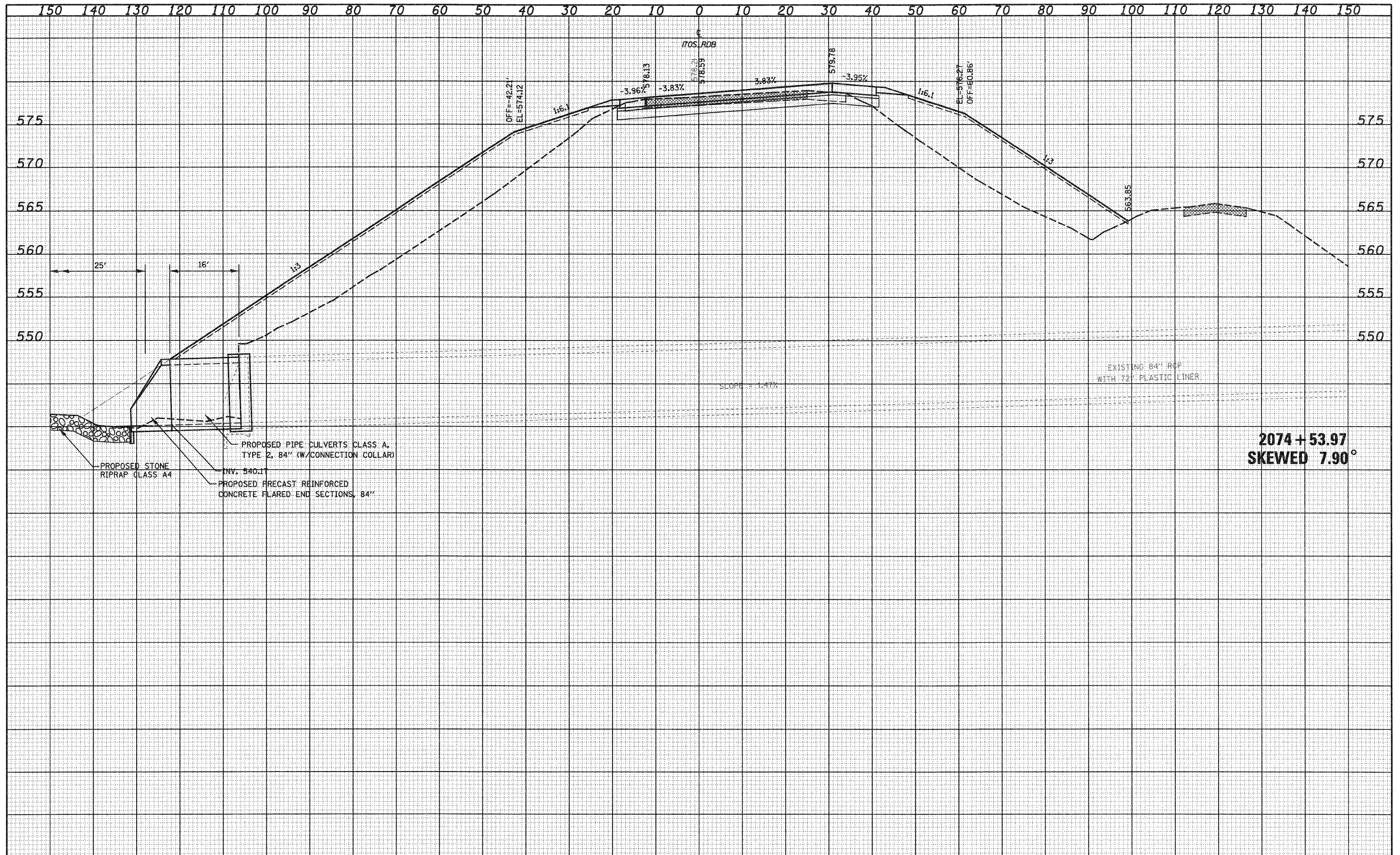


DATE	
BY	
FINAL SURVEY	
REVISIONS	
NOTE BOOK	
AREAS CHECKED	

DATE	
BY	
ORIGINAL SURVEY	
REVISIONS	
NOTE BOOK	
AREAS CHECKED	



FILE NAME =	USER NAME = paul	DESIGNED - JWS	REVISED -	STATE OF ILLINOIS DEPARTMENT OF TRANSPORTATION	CULVERT PROFILES, SOUTH TRI LEVEL ROADWAY B		F.A.T. RTE.	SECTION	COUNTY	TOTAL SHEETS	SHEET NO.
PROJECT: 143-1000(2.5)-700p/S TriLevel.culvert.profiles	PLOT SCALE = 20.0000' / IN.	DRAWN - LEC	REVISED -		57/70	(25-3R)	EFFINGHAM	1416	486		
PLOT DATE = 2/11/2010	DATE - 2-25-08	CHECKED - BRM	REVISED -		SCALE: 1"=10' SHEET NO. 11 OF 17 SHEETS STA. 2074+53.97 TO STA. 2074+53.97		CONTRACT NO. 74296				
		DATE - 2-25-08	REVISED -		FED. ROAD DIST. NO. ILLINOIS FED. AID PROJECT						