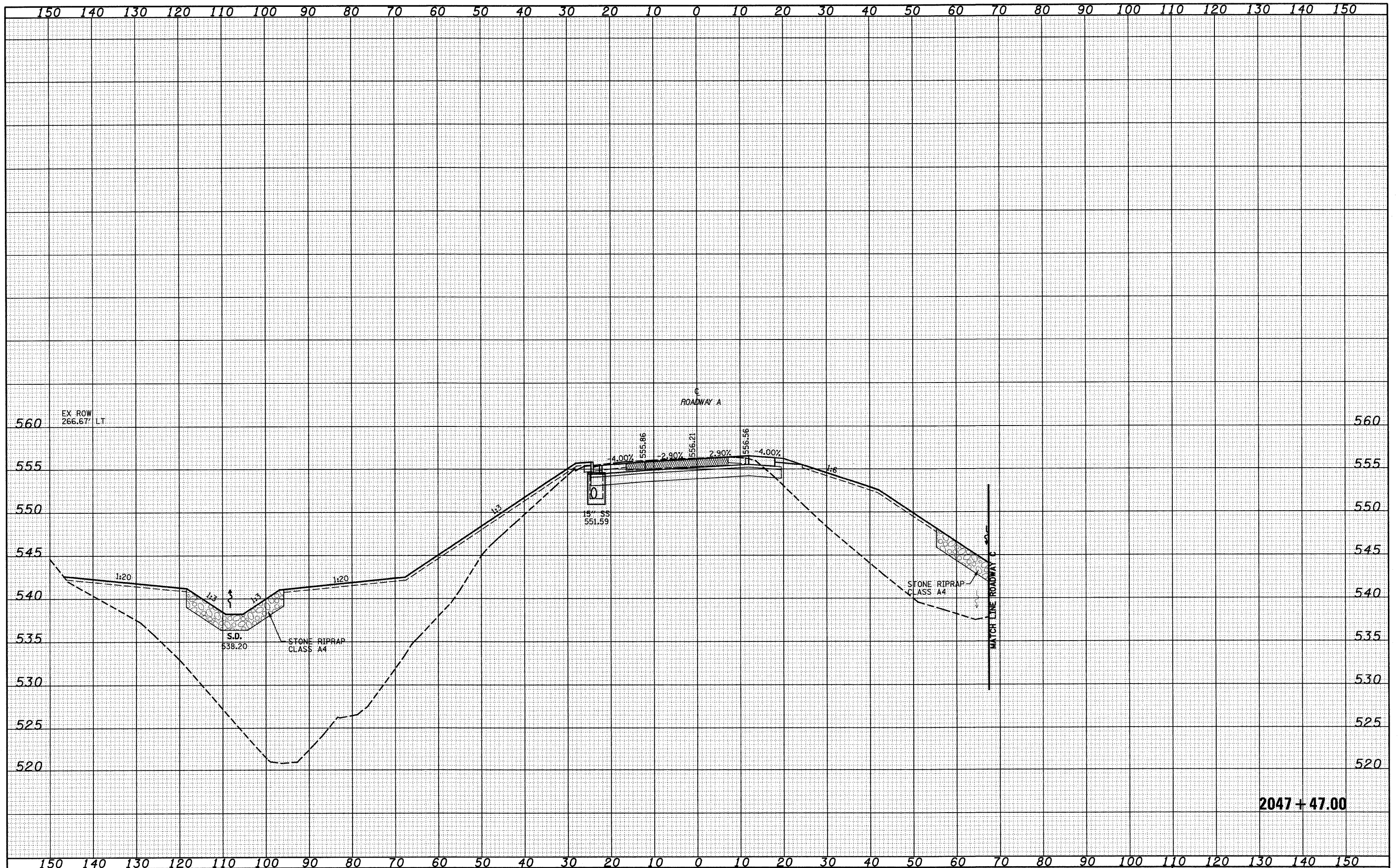


DATE	
BY	
FINAL SURVEY	
SURVEYED	
NOTE BOOK	
TEMPLATE	
AREAS	
CHECKED	
NO.	

DATE	
BY	
ORIGINAL SURVEY	
SURVEYED	
NOTE BOOK	
TEMPLATE	
AREAS	
CHECKED	
NO.	



2047 + 47.00

FILE NAME =	USER NAME = linda	DESIGNED - JWS	REVISED -	STATE OF ILLINOIS DEPARTMENT OF TRANSPORTATION	CROSS SECTIONS SOUTH TRI LEVEL - ROADWAY A		F.A.I. RTE.	SECTION	COUNTY	TOTAL SHEETS	SHEET NO.
S:\Projects\403\403-77\403-77.dwg		DRAWN - LEC	REVISED -		57/70	(25-3)R	EFFINGHAM	1416	665	CONTRACT NO. 74296	
		CHECKED - BRM	REVISED -		SCALE: 1"=10'	SHEET NO. 49 OF 125 SHEETS	STA. 2047+00.00 TO STA. 2047+00.00	FED. ROAD DIST. NO.	ILLINOIS FED. AID PROJECT		
		DATE - 2-25-08	REVISED -								