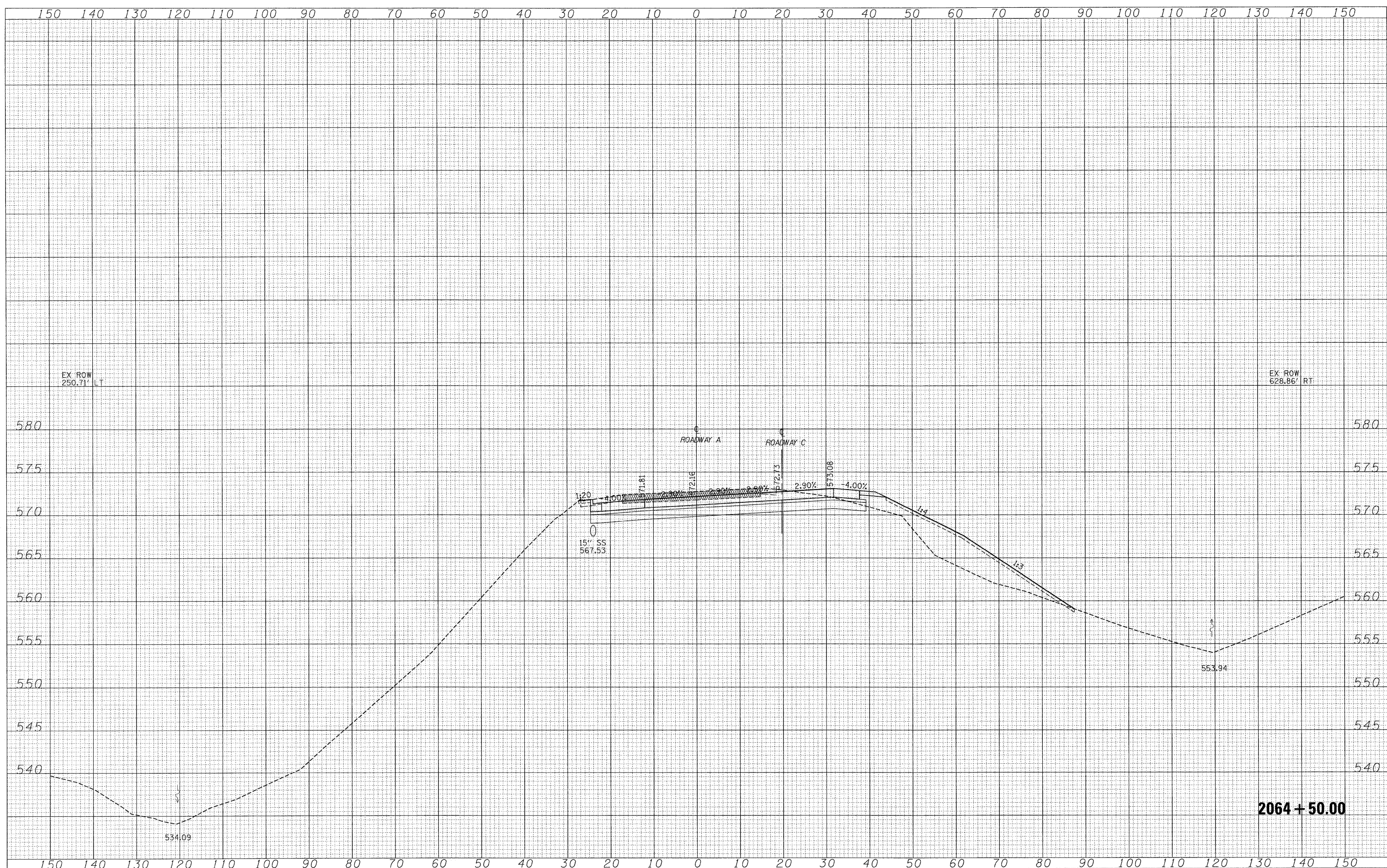


DATE	
BY	
FINAL SURVEY	SURVEYED
NOTE BOOK	PLOTTED
NO.	TEMPLATE
	AREAS CHECKED

DATE	
BY	
ORIGINAL SURVEY	SURVEYED
NOTE BOOK	PLOTTED
NO.	TEMPLATE
	AREAS CHECKED



FILE NAME =	USER NAME = lunde	DESIGNED - JWS	REVISED -	STATE OF ILLINOIS DEPARTMENT OF TRANSPORTATION	CROSS SECTIONS SOUTH TRI LEVEL - ROADWAY A			F.A.I. RTE. 57/70	SECTION (25-3)R	COUNTY EFFINGHAM	TOTAL SHEETS 1416	SHEET NO. 707
3:\Project\40-111\25-3\Road\15-11-08.dwg		DRAWN - LEC	REVISED -		SCALE: 1"=10'	SHEET NO. 91 OF 125 SHEETS	STA. 2064+50.00 TO STA. 2064+50.00	FED. ROAD DIST. NO.	ILLINOIS	FED. AID PROJECT	CONTRACT NO. 74296	
		CHECKED - BRM	REVISED -									
		DATE - 2-25-08	REVISED -									