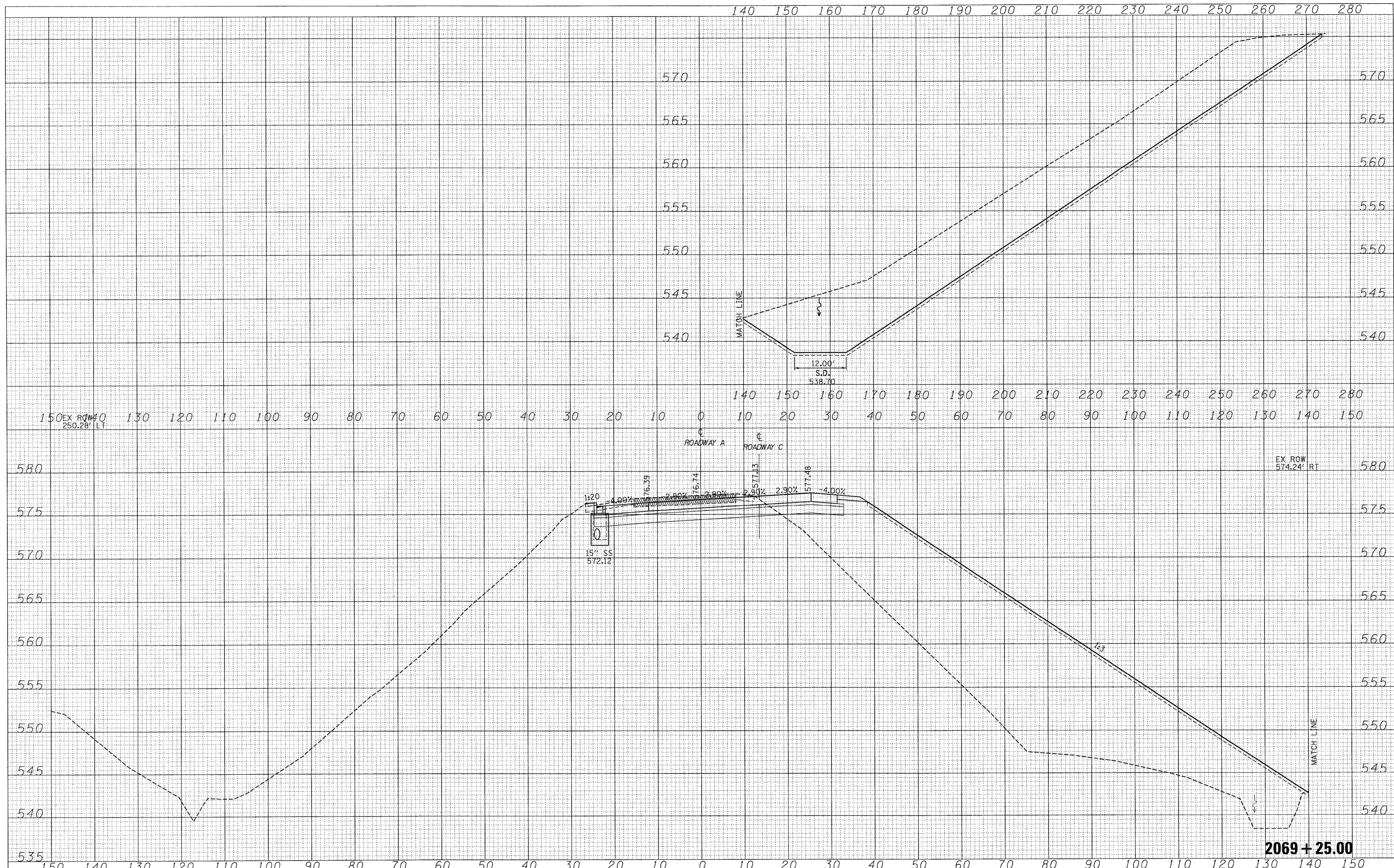


DATE	
BY	
FINISHED SURVEY	
PLOTTED	
TEMPLATE	
NOTE BOOK	
AREAS	
CHECKED	
NO.	

DATE	
BY	
ORIGINAL SURVEY	
PLOTTED	
TEMPLATE	
NOTE BOOK	
AREAS	
CHECKED	
NO.	



FILE NAME =	USER NAME = lunde	DESIGNED - JWS	REVISED -	<b>STATE OF ILLINOIS</b> <b>DEPARTMENT OF TRANSPORTATION</b>	<b>CROSS SECTIONS SOUTH TRI LEVEL - ROADWAY A</b>			F.A.I. RTE. 57/70	SECTION (25-3)R	COUNTY EFFINGHAM	TOTAL SHEETS 1416	SHEET NO. 718
SAProject\03-0002-57-70\0116 TriLevel.DWG		DRAWN - LEC	REVISED -		SCALE: 1"=10'	SHEET NO. 102 OF 125 SHEETS	STA. 2069+00.00 TO STA. 2069+00.00	FED. ROAD DIST. NO.	ILLINOIS	FED. AID PROJECT	CONTRACT NO. 74296	
		CHECKED - BRM	REVISED -									
		DATE - 2-25-08	REVISED -									

2069+25.00