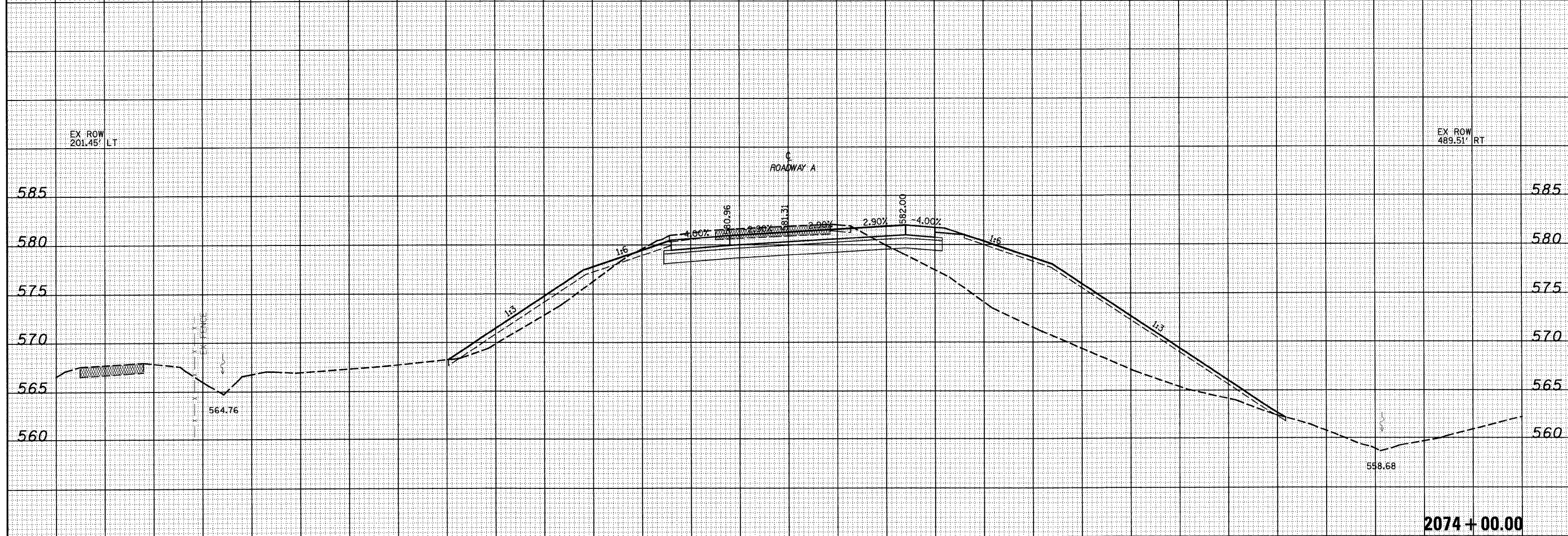
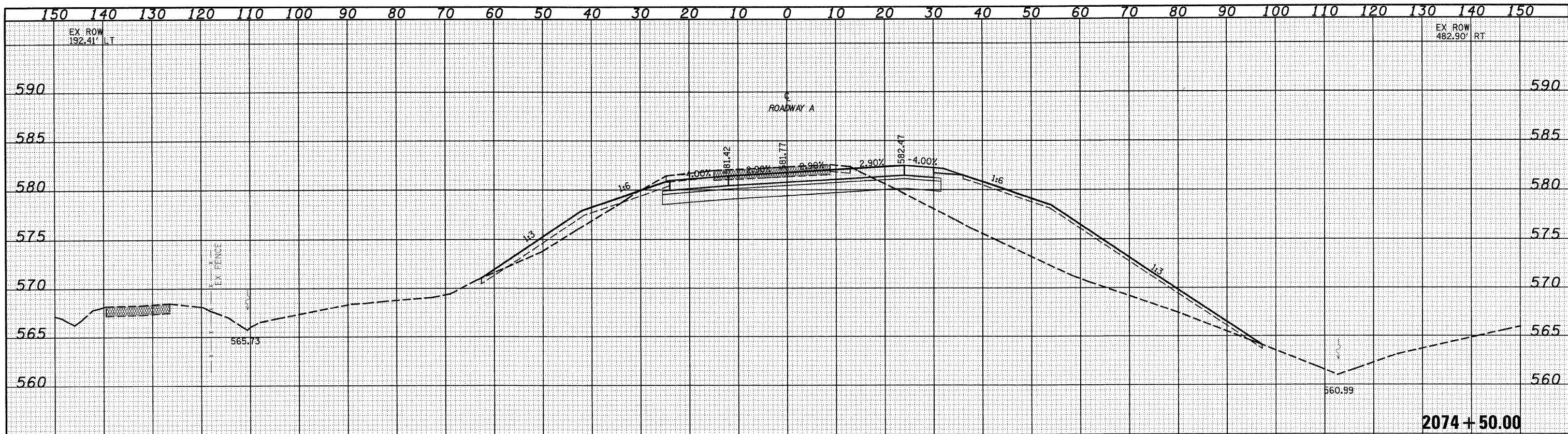


DATE	
BY	
DESIGNED	
DRAWN	
CHECKED	
DATE	

DATE	
BY	
DESIGNED	
DRAWN	
CHECKED	
DATE	



FILE NAME =	USER NAME = linda	DESIGNED - JWS	REVISED -	<b>STATE OF ILLINOIS</b> <b>DEPARTMENT OF TRANSPORTATION</b>	<b>CROSS SECTIONS SOUTH TRI LEVEL - ROADWAY A</b>		F.A.I. RTE. 57/70	SECTION (25-3)R	COUNTY EFFINGHAM	TOTAL SHEETS 1416	SHEET NO. 727
PROJECT NO. 000257-70.dwg	PLOT SCALE = 20,00000 ' / IN.	DRAWN - LEC	REVISED -		SCALE: 1"=10'	SHEET NO. 111 OF 125 SHEETS	STA. 2074+00.00 TO STA. 2074+50.00	FED. ROAD DIST. NO.	ILLINOIS FED. AID PROJECT	CONTRACT NO. 74296	
	PLOT DATE = 2/9/2010	CHECKED - BRM	REVISED -								
		DATE - 2-25-08	REVISED -								