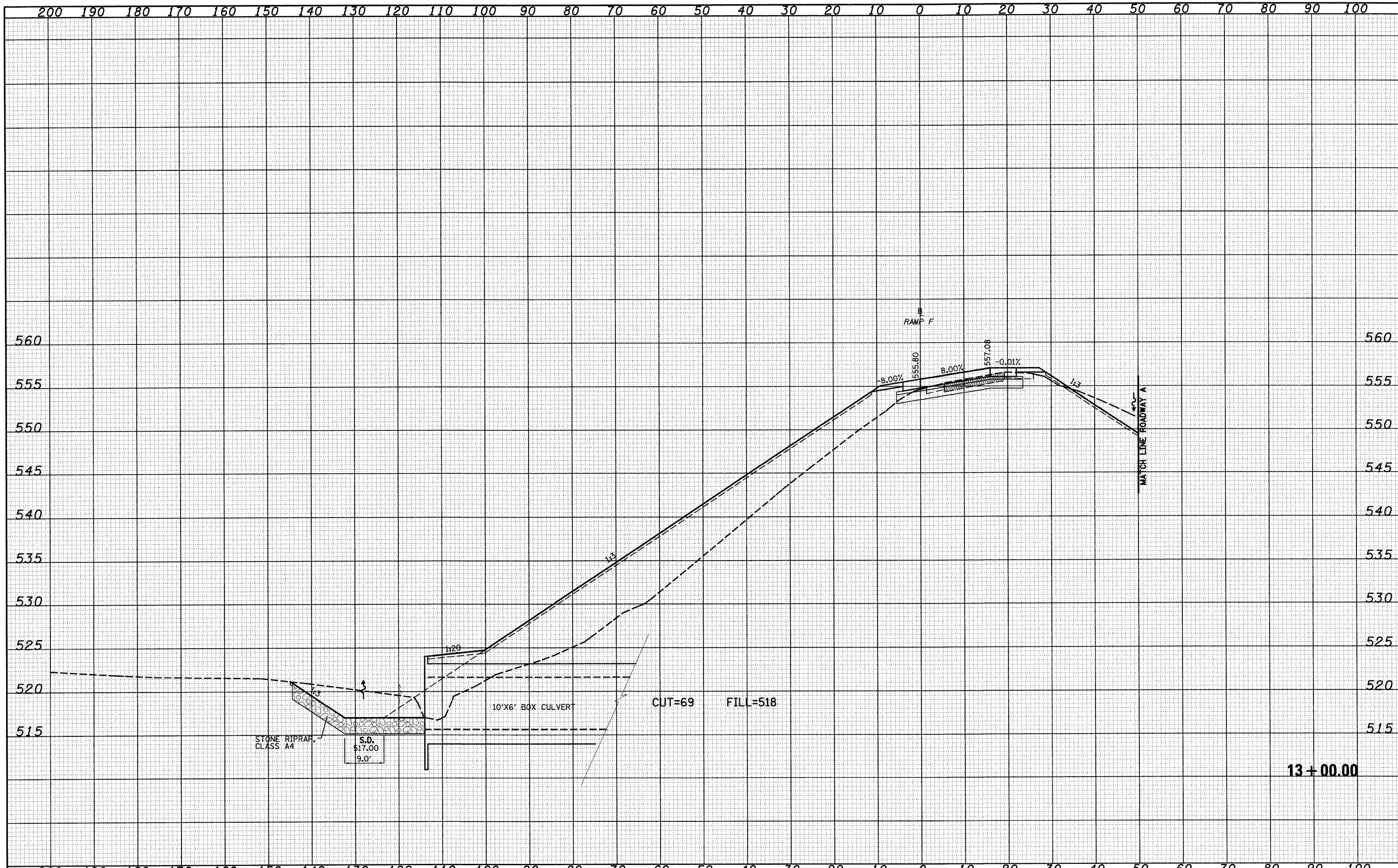


DATE	
BY	
SURVEYED	
NOTE BOOK	
AREAS CHECKED	

DATE	
BY	
SURVEYED	
NOTE BOOK	
AREAS CHECKED	



13+00.00

FILE NAME =	USER NAME = lmdca	DESIGNED - JWS	REVISED -	STATE OF ILLINOIS DEPARTMENT OF TRANSPORTATION	CROSS SECTIONS SOUTH TRI LEVEL - RAMP F			F.A.I. RTE.	SECTION	COUNTY	TOTAL SHEETS	SHEET NO.
5:\projects\102\1007257\70\fig\5 Trd\work\DRWF.dwg		DRAWN - LEC	REVISED -		57/70	(25-3R)	EFFINGHAM	1416	779			
PLOT SCALE = 20.00000' / IN.		CHECKED - BRM	REVISED -		SCALE: 1"=10'	SHEET NO. 8 OF 12 SHEETS	STA. 13+00.00 TO STA. 13+00.00	CONTRACT NO. 74296				
PLOT DATE = 2/9/2010		DATE - 2-25-08	REVISED -		FED. ROAD DIST. NO.		ILLINOIS FED. AID PROJECT					