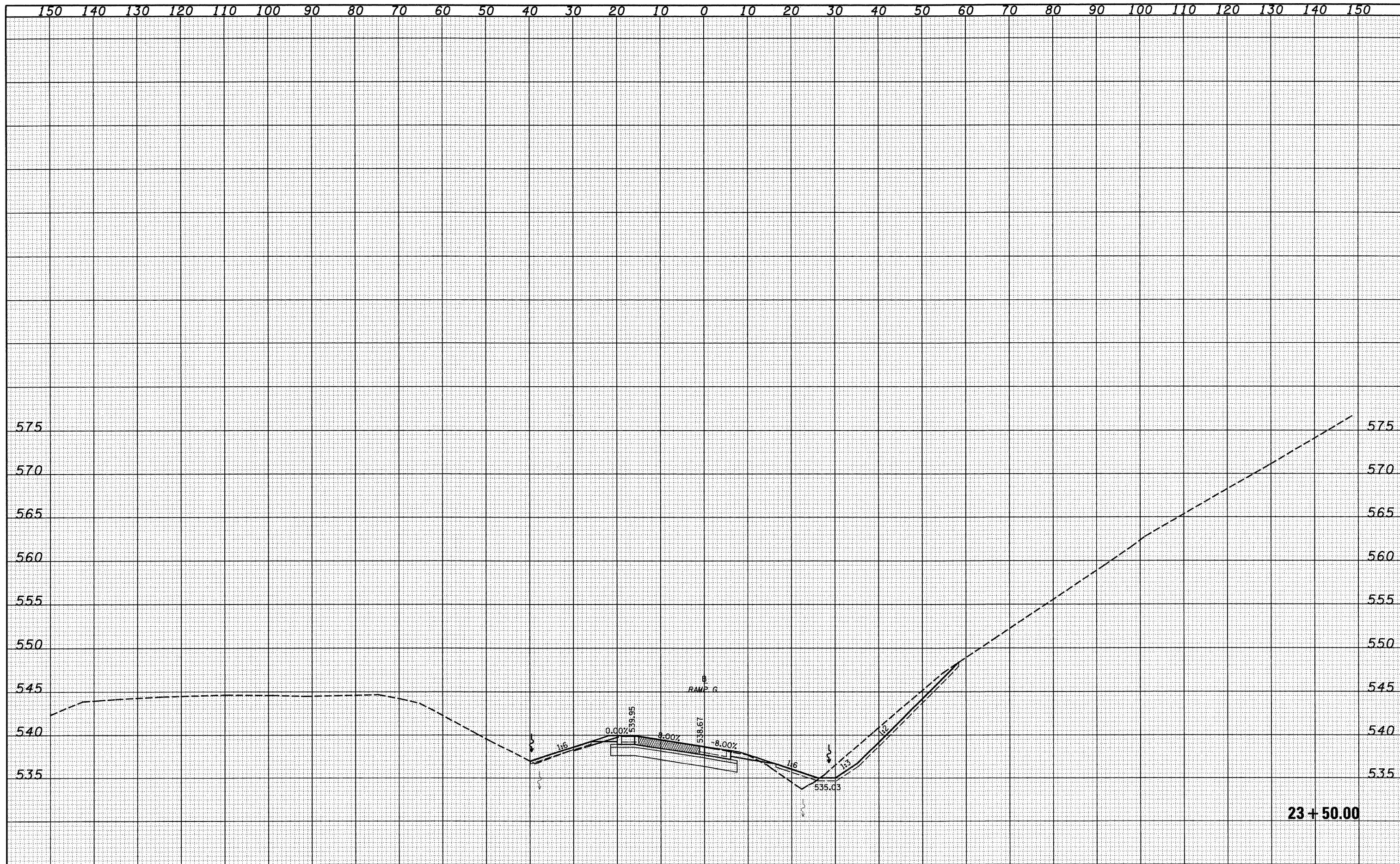


DATE	
BY	
FINAL SURVEY	
NOTE BOOK	
NO.	
SURVEYED	
TEMPLATE	
AREAS CHECKED	

DATE	
BY	
ORIGINAL SURVEY	
NOTE BOOK	
NO.	
SURVEYED	
TEMPLATE	
AREAS CHECKED	



FILE NAME =	USER NAME = linda	DESIGNED - JWS	REVISED -	<b>STATE OF ILLINOIS</b> <b>DEPARTMENT OF TRANSPORTATION</b>	<b>CROSS SECTIONS SOUTH TRI LEVEL - RAMP G</b>		F.A.I. RTE.	SECTION	COUNTY	TOTAL SHEETS	SHEET NO.	
S:\Project\103\103-70\103-70.dwg		DRAWN - LEC	REVISED -		SCALE: 1"=10'	SHEET NO. 14 OF 15 SHEETS	STA. 23+50.00 TO STA. 23+50.00	57/70	(25-3)R	EFFINGHAM	1416	797
		CHECKED - BRM	REVISED -		CONTRACT NO. 74296		FED. ROAD DIST. NO.		ILLINOIS FED. AID PROJECT			
		DATE - 2-25-08	REVISED -									