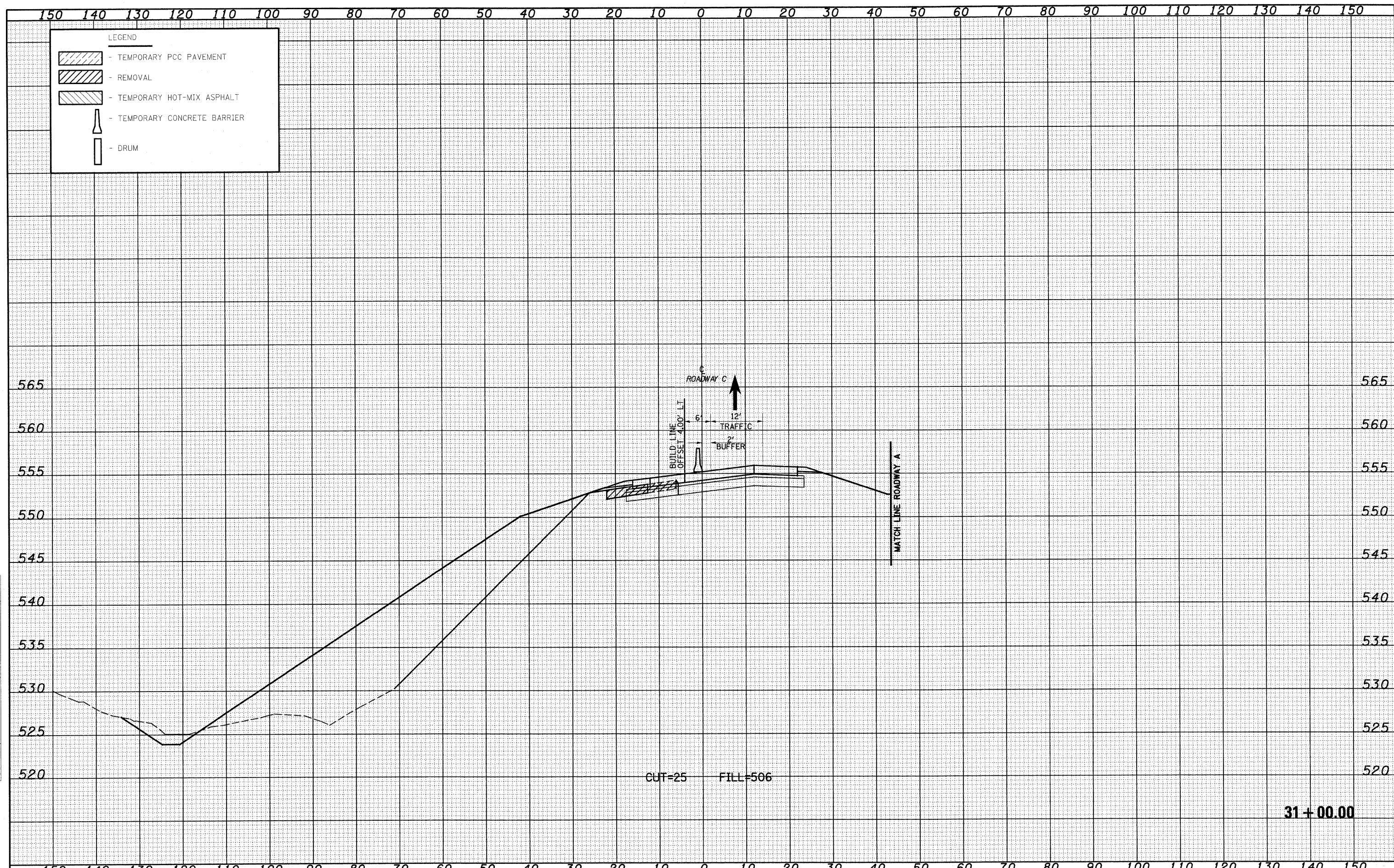


DATE	
BY	
SURVEYED	
REVISIONS	
NO.	
DATE	
BY	
SURVEYED	
REVISIONS	
NO.	
DATE	
BY	
SURVEYED	
REVISIONS	
NO.	
DATE	
BY	
SURVEYED	
REVISIONS	
NO.	
DATE	
BY	
SURVEYED	
REVISIONS	
NO.	
DATE	
BY	
SURVEYED	
REVISIONS	
NO.	

DATE	
BY	
SURVEYED	
REVISIONS	
NO.	
DATE	
BY	
SURVEYED	
REVISIONS	
NO.	
DATE	
BY	
SURVEYED	
REVISIONS	
NO.	
DATE	
BY	
SURVEYED	
REVISIONS	
NO.	
DATE	
BY	
SURVEYED	
REVISIONS	
NO.	



FILE NAME -	USER NAME = lunda	DESIGNED - JWS	REVISED -	STATE OF ILLINOIS DEPARTMENT OF TRANSPORTATION	MAINTENANCE OF TRAFFIC SOUTH TRI LEVEL - ROADWAY C (STAGE 2)	F.A.I. RTE.	SECTION	COUNTY	TOTAL SHEETS	SHEET NO.		
S:\Project\103\1037-57\Map\15 TriLevel_17690001-52.dwg	PLOT SCALE = 20.0/000' / IN.	DRAWN - LEC	REVISED -			57/70	(25-3)R	EFFINGHAM	1416	1274		
	PLOT DATE = 2/18/2010	CHECKED - BRM	REVISED -			SCALE: 1"=10'		SHEET NO. 3 OF 8 SHEETS		STA. 31+00.00 TO STA. 31+00.00	FED. ROAD DIST. NO.	ILLINOIS FED. AID PROJECT
		DATE - 2-25-08	REVISED -							CONTRACT NO. 74296		