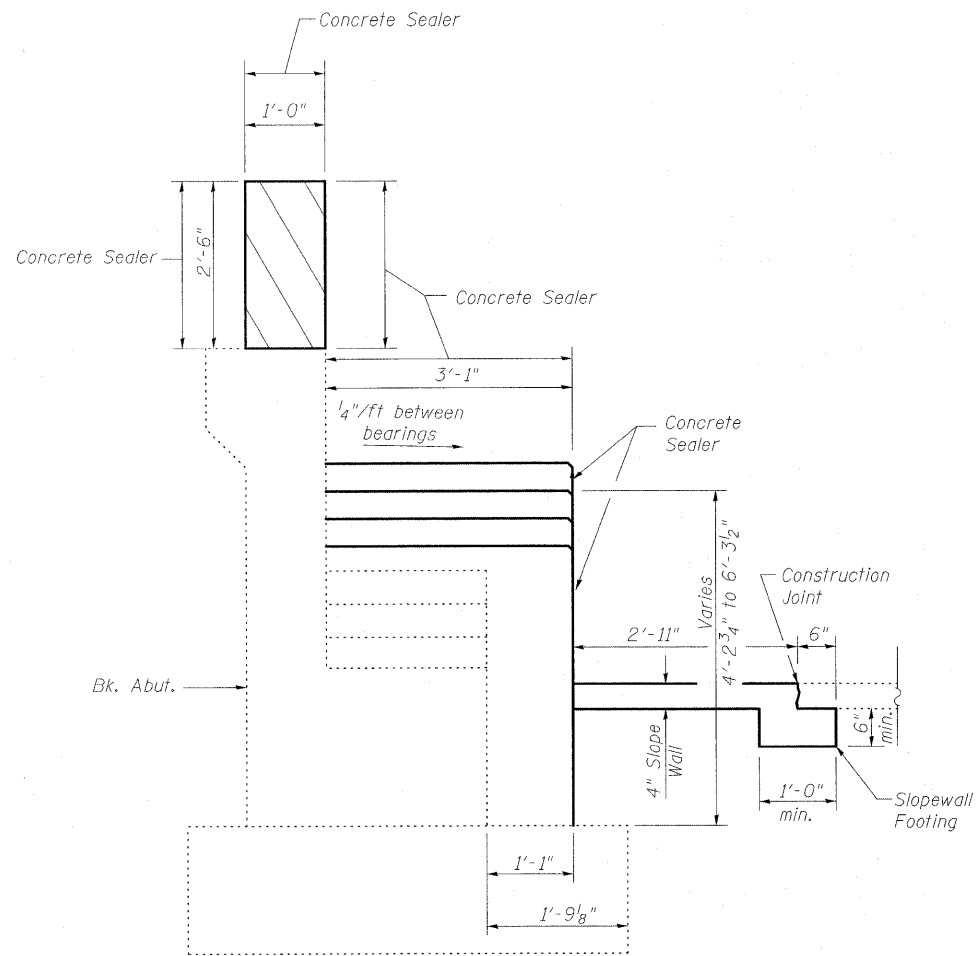
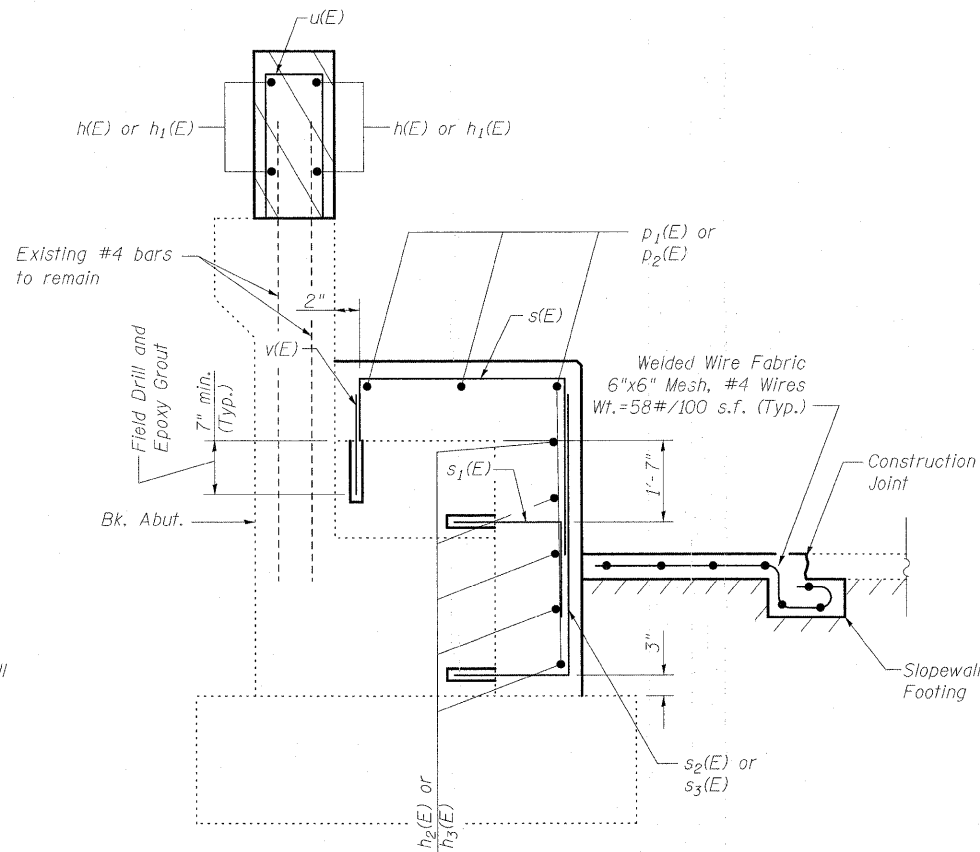


STATE OF ILLINOIS
DEPARTMENT OF TRANSPORTATION



Dimensions at Rt L

**SECTION A-A
THRU ABUTMENT
SHOWING OUTLINE**

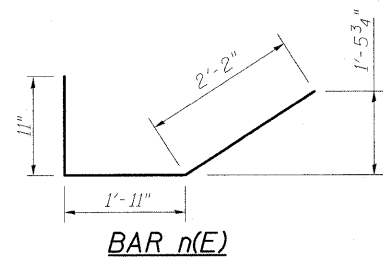


**SECTION A-A
THRU ABUTMENT
SHOWING REINFORCEMENT**

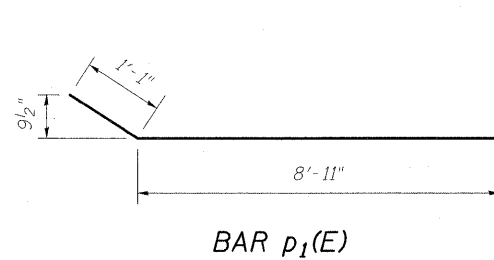
Notes:
For Endpost details see Sheet 7 of 27.
Hatched area quantity of concrete included with Concrete Superstructure.
Bars shall be drilled and grouted according to Section 584 of the Standard Specifications.
Cost of Slopewall Footing included with Slopewall 4".
Apply Concrete Sealer to exposed horizontal and vertical faces of abutment extension.

**SOUTH ABUTMENT
BILL OF MATERIAL**

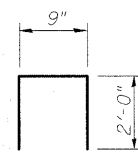
Bar	No.	Size	Length	Shape	
h(E)	4	#6	21'-7"	—	
h ₁ (E)	4	#6	21'-5"	—	
h ₂ (E)	4	#5	24'-10"	—	
h ₃ (E)	5	#5	21'-0"	—	
n(E)	5	#5	5'-0"	┘	
n ₁ (E)	6	#5	3'-5"	┘	
p ₁ (E)	2	#5	10'-0"	┘	
p ₂ (E)	16	#5	10'-3"	┘	
s(E)	52	#5	7'-2"	┘	
s ₁ (E)	46	#5	3'-0"	┘	
s ₂ (E)	24	#5	4'-5"	┘	
s ₃ (E)	22	#5	5'-9"	┘	
u(E)	44	#5	4'-9"	┘	
v(E)	52	#5	1'-2"	—	
Concrete Sealer				Sq. Ft.	691
Slopewall, 4"				Sq. Yd.	23
Concrete Structures				Cu. Yd.	14.0
Reinforcement Bars, Epoxy Coated				Pound	1760



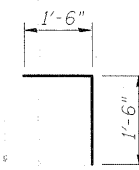
BAR n(E)



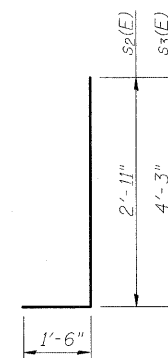
BAR p₁(E)



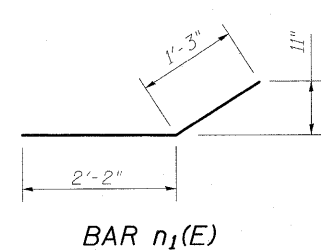
BAR u(E)



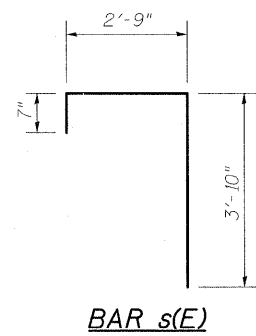
BAR s₁(E)



BARS s₂(E)-s₃(E)



BAR n₁(E)



BAR s(E)

DESIGNED	B.B.
CHECKED	C.J.F.
DRAWN	W.J.S.
CHECKED	C.J.F. & B.B.



**BERNARDIN
LOCHMUELLER &
ASSOCIATES, INC.**

3 Oak Drive
Maryville, IL 62062-5685
Local (618) 288-4965
Fax 618-288-4966

SHEET NO. 17 27 SHEETS	F.A.I. RTE.	SECTION	COUNTY	TOTAL SHEETS	SHEET NO.
	57	(25-3HB)I-2	EFFINGHAM	1416	1371
SN 025-0001			CONTRACT NO. 74296		
FED. ROAD DIST. NO. 7 ILLINOIS FED. AID PROJECT					

**SOUTH ABUTMENT SECTIONS
STRUCTURE NO. 025-0001**