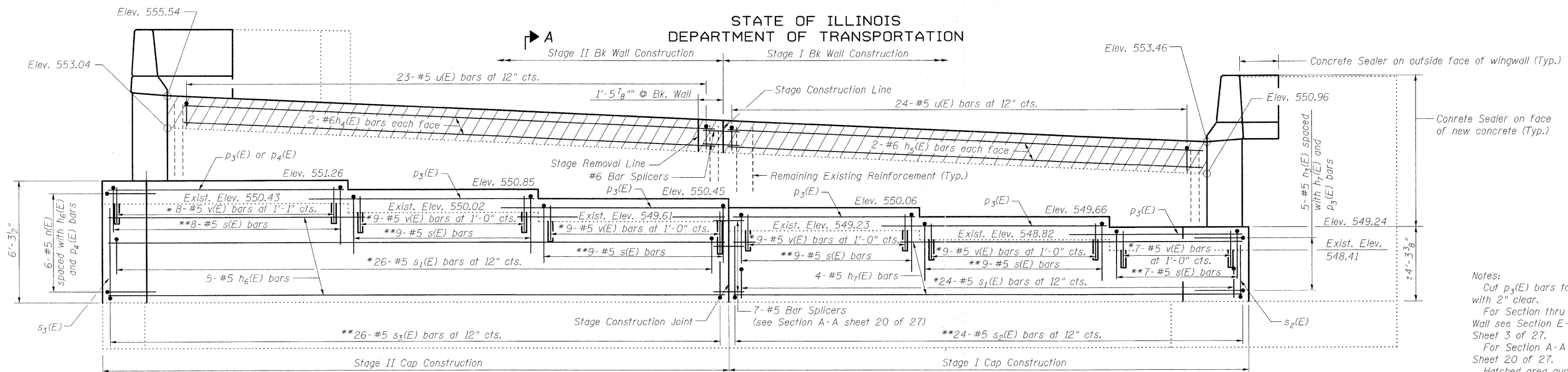


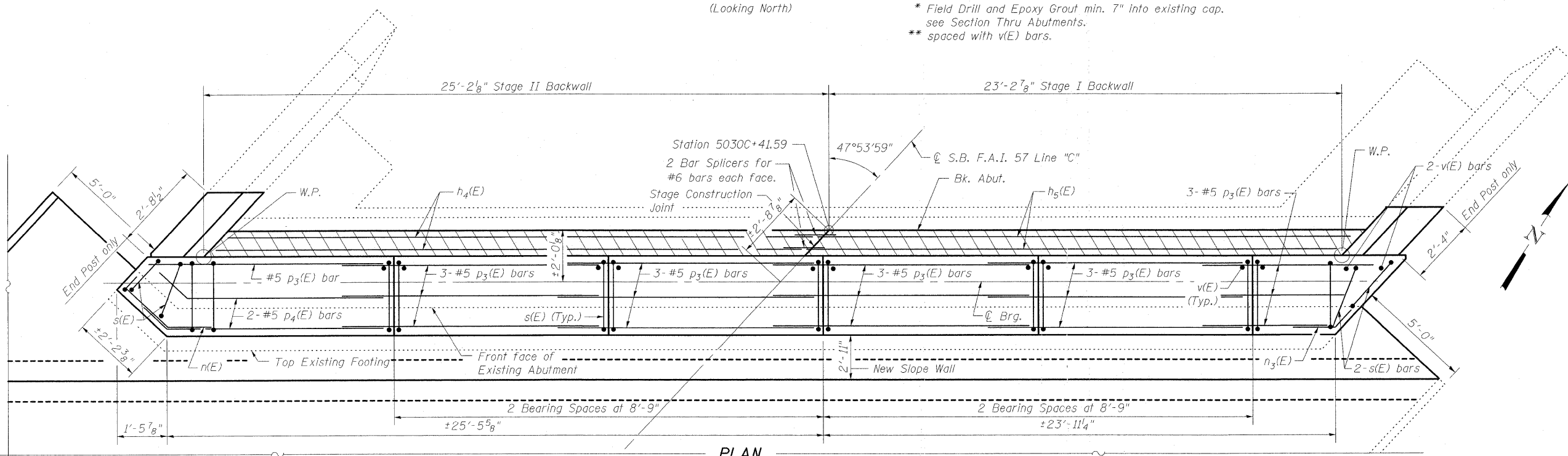
STATE OF ILLINOIS
DEPARTMENT OF TRANSPORTATION



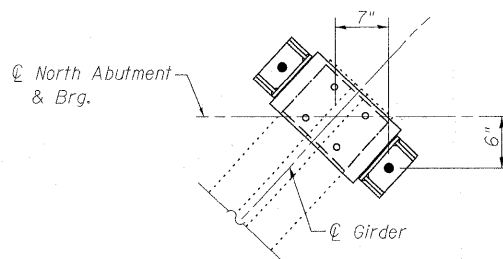
ELEVATION
(Looking North)

* Field Drill and Epoxy Grout min. 7" into existing cap.
see Section Thru Abutments.
** spaced with v(E) bars.

Notes:
Cut p₃(E) bars to fit with 2" clear.
For Section thru Slope Wall see Section E-E Sheet 3 of 27.
For Section A-A see Sheet 20 of 27.
Hatched area quantity of concrete included with Concrete Superstructure.
Space reinforcement to miss anchor bolts.
Bars shall be drilled and grouted according to Section 584 of the Standard Specifications.



PLAN



ANCHOR BOLT DETAIL
NORTH ABUTMENT

MIN. BAR LAP
#5 bar = 1'-8"

NORTH ABUTMENT DETAILS
STRUCTURE NO. 025-0001

DESIGNED	B.B.
CHECKED	C.J.F.
DRAWN	W.J.S.
CHECKED	C.J.F. & B.B.

SHEET NO. 19 27 SHEETS	F.A.I. RTE.	SECTION	COUNTY	TOTAL SHEETS	SHEET NO.
	57	(25-3HBII-2)	EFFINGHAM	1416	1373
SN 025-0001			CONTRACT NO. 74296		
FED. ROAD DIST. NO. 7 ILLINOIS FED. AID PROJECT					



**BERNARDIN
LOCHMUELLER &
ASSOCIATES, INC.**

3 Oak Drive
Maryville, IL 62052-5635
Local: (618) 288-4095
Fax: 618-288-4666