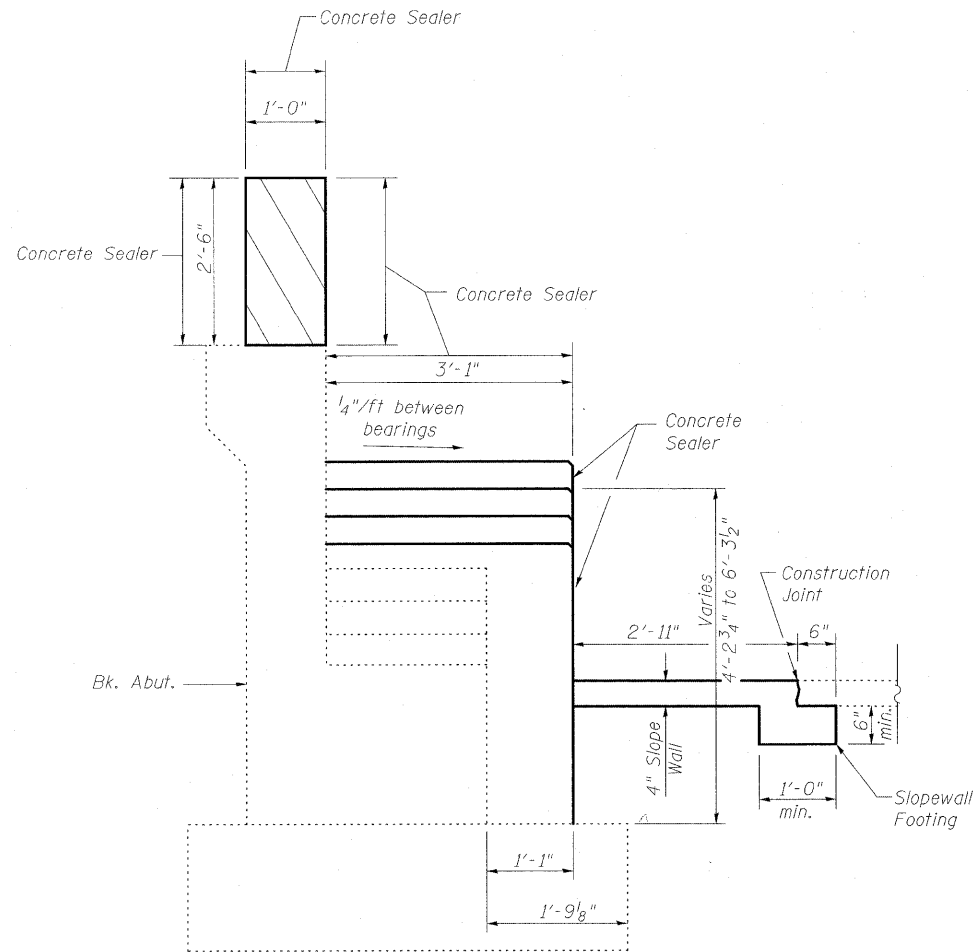
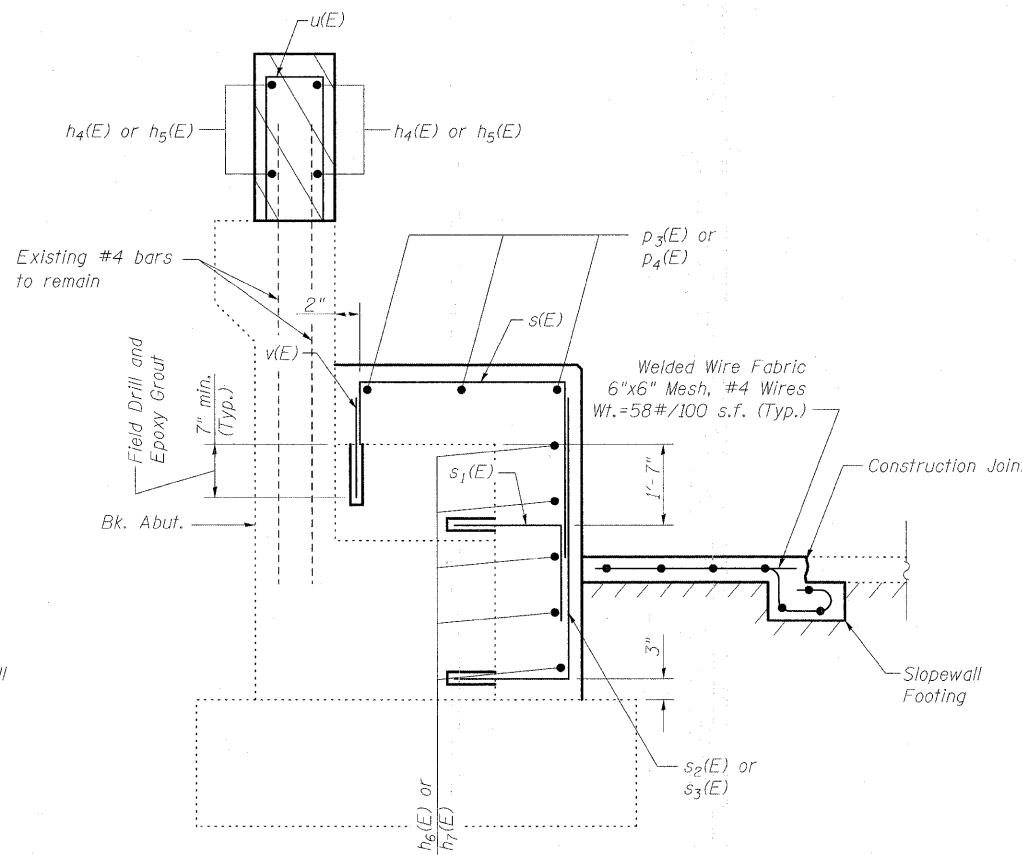


STATE OF ILLINOIS  
DEPARTMENT OF TRANSPORTATION

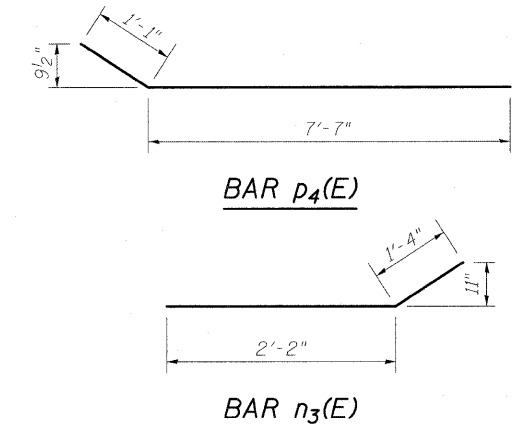


Dimensions at Rt L

**SECTION A-A  
THRU ABUTMENT  
SHOWING OUTLINE**



**SECTION A-A  
THRU ABUTMENT  
SHOWING REINFORCEMENT**



**NORTH ABUTMENT  
BILL OF MATERIAL**

Bar	No.	Size	Length	Shape
$h_4(E)$	4	#6	23'-7"	—
$h_5(E)$	4	#6	23'-11"	—
$h_6(E)$	5	#5	25'-1"	—
$h_7(E)$	4	#5	23'-9"	—
$n(E)$	6	#5	5'-0"	└
$n_3(E)$	5	#5	3'-6"	└
$p_3(E)$	16	#5	10'-3"	—
$p_4(E)$	2	#5	8'-8"	└
$s(E)$	51	#5	7'-2"	└
$s_1(E)$	50	#5	3'-0"	└
$s_2(E)$	24	#5	4'-5"	└
$s_3(E)$	26	#5	5'-9"	└
$u(E)$	47	#5	4'-9"	└
$v(E)$	51	#5	1'-2"	—
Concrete Sealer		Sq. Ft.	765	
Slopewall, 4"		Sq. Yd.	25	
Concrete Structures		Cu. Yd.	14.0	
Reinforcement Bars, Epoxy Coated		Pound	1860	
Structure Excavation		Cu. Yd.	13.0	

Notes:  
For Endpost details see Sheet 7 of 27.  
For additional bar bend details see Sheet 17 of 27.  
Hatched area quantity of concrete included with Concrete Superstructure.  
Bars shall be drilled and grouted according to Section 584 of the Standard Specifications.  
Cost of Slopewall Footing included with Slopewall 4".  
Apply Concrete Sealer to exposed horizontal and vertical faces of abutment extension.

DESIGNED	B.B.
CHECKED	C.J.F.
DRAWN	W.J.S.
CHECKED	C.J.F. & B.B.



**BERNARDIN  
LOCHMUELLER &  
ASSOCIATES, INC.**

3 Oak Drive  
Maryville, IL 62450-5685  
Local: (618) 288-4685  
Fax: 618-288-4686

SHEET NO. 20 27 SHEETS	F.A.I. RTE.	SECTION	COUNTY	TOTAL SHEETS	SHEET NO.
	57	(25-3HB)I-2	EFFINGHAM	1416	1374
SN 025-0001			CONTRACT NO. 74296		
FED. ROAD DIST. NO. 7 ILLINOIS FED. AID PROJECT					

**NORTH ABUTMENT SECTIONS  
STRUCTURE NO. 025-0001**