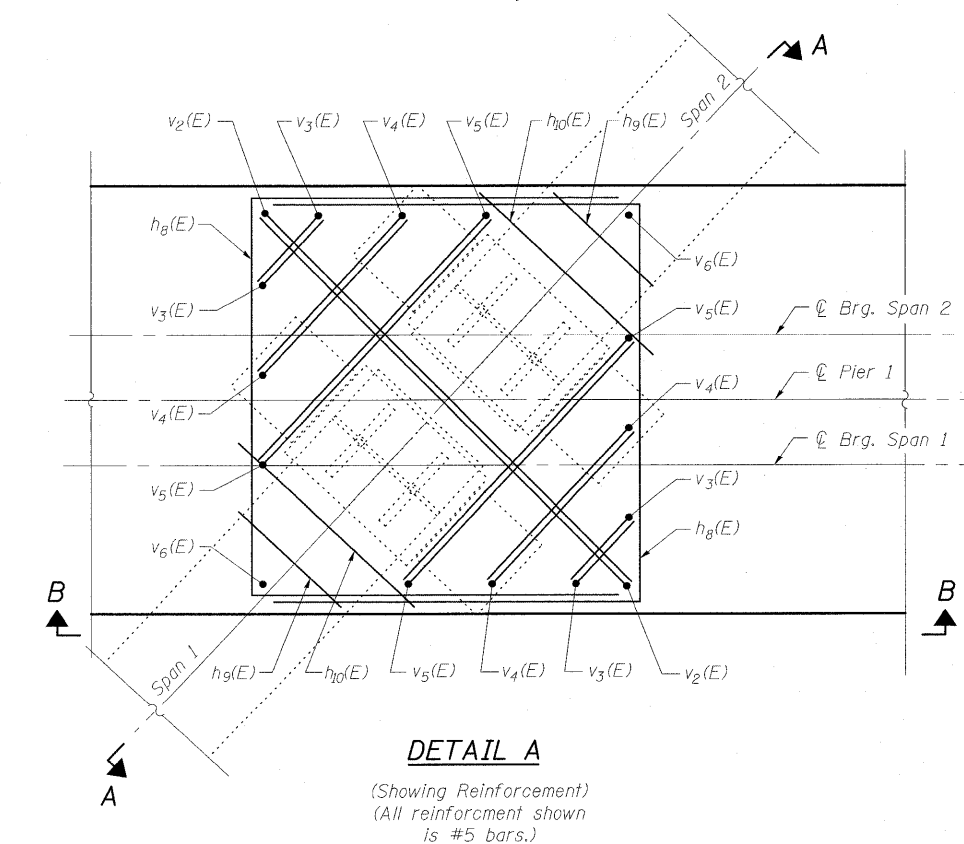
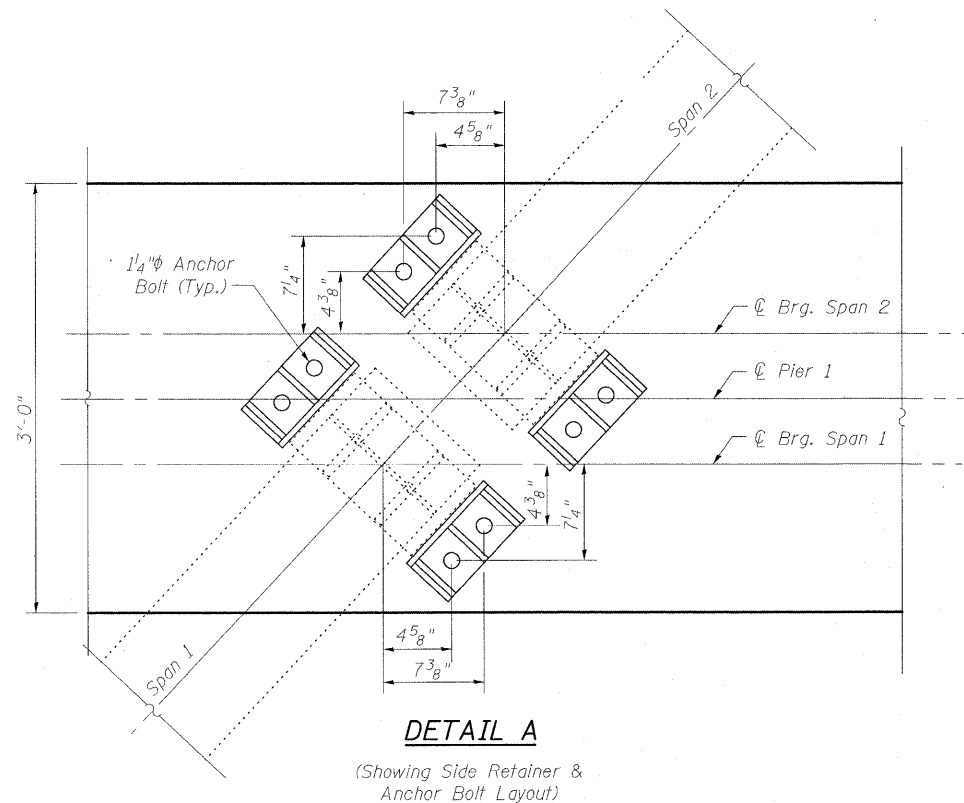
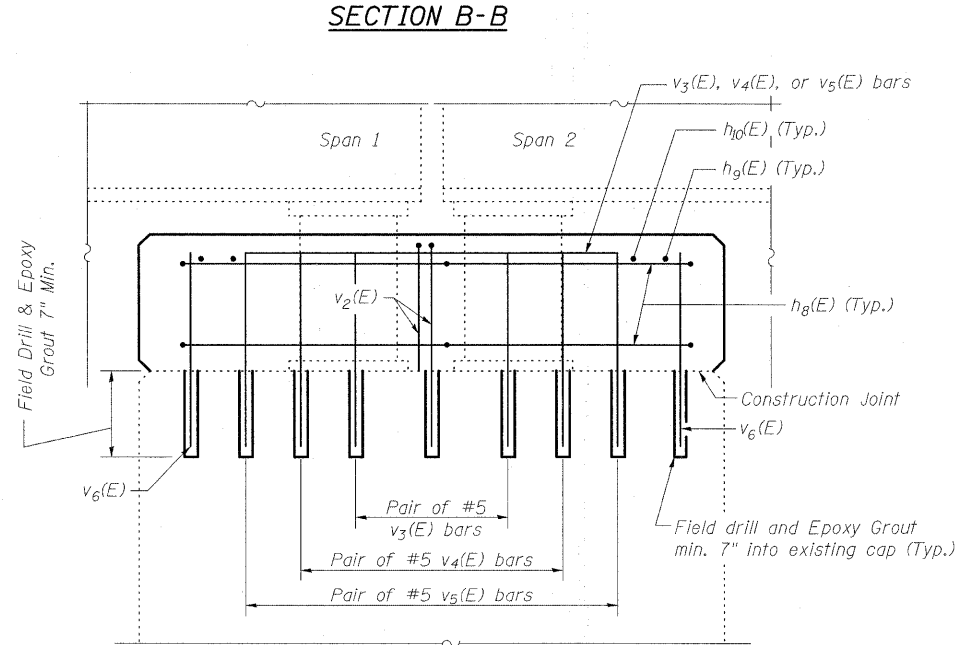
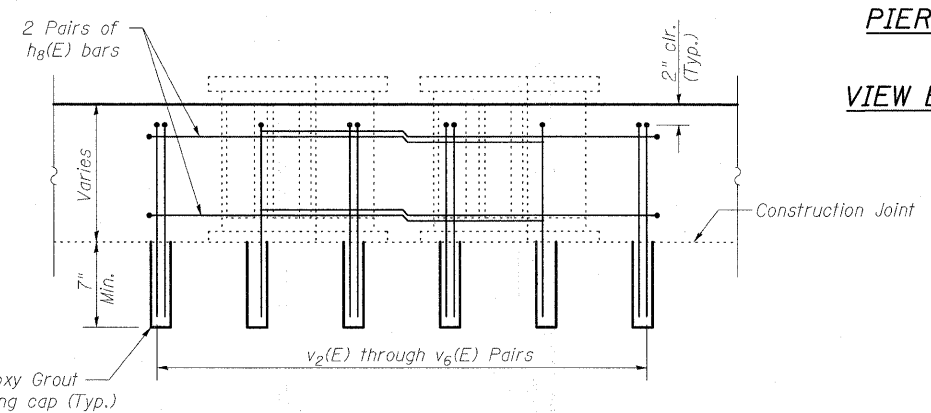
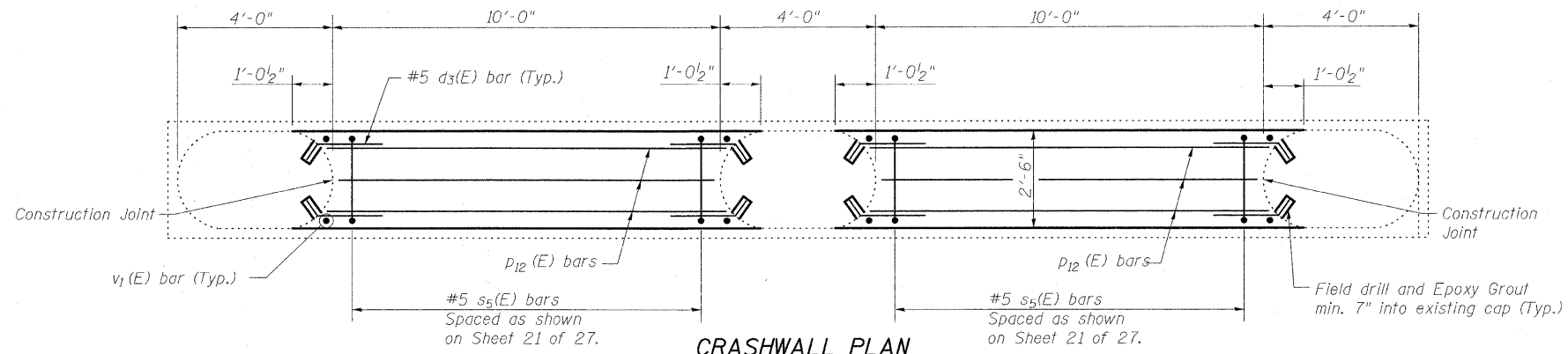


STATE OF ILLINOIS
DEPARTMENT OF TRANSPORTATION

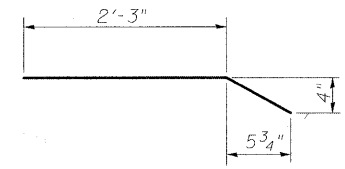


DESIGNED	B.B.
CHECKED	C.J.F.
DRAWN	W.J.S.
CHECKED	C.J.F. & B.B.

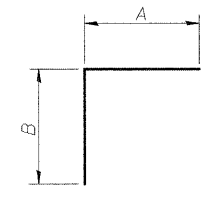
MIN BAR LAP
#5 bar = 1'-8"



SECTION A-A
(All v(E) bars shown are drilled and grouted)
Side Retainers not shown for clarity.



h8(E) & s5(E) BARS



Bar	A	B
s4(E)	2'-8"	1'-4"
v2(E)	3'-11"	1'-4"
v3(E)	9"	1'-4"
v4(E)	1'-8"	1'-4"
v5(E)	2'-8"	1'-4"

Notes:
Bars shall be drilled and grouted according to Section 584 of the Standard Specifications.
Concrete Sealer shall be applied only to exposed surfaces of the new concrete on Pier 1.

**PIER 1
BILL OF MATERIAL**

Bar	No.	Size	Length	Shape
d3(E)	32	#5	2'-10"	—
h8(E)	24	#5	8'-10"	□
h9(E)	12	#5	1'-3"	—
h10(E)	12	#5	2'-0"	—
p5(E)	2	#5	6'-8"	—
p6(E)	4	#5	1'-9"	—
p7(E)	2	#5	2'-10"	—
p8(E)	8	#5	10'-0"	—
p9(E)	8	#5	2'-6"	—
p10(E)	2	#5	8'-6"	—
p11(E)	10	#5	4'-8"	—
p12(E)	18	#5	9'-8"	—
s4(E)	56	#5	4'-1"	┌
s5(E)	20	#5	9'-6"	□
v1(E)	8	#5	3'-8"	—
v2(E)	12	#5	5'-3"	┌
v3(E)	24	#5	2'-1"	┌
v4(E)	24	#5	3'-0"	┌
v5(E)	24	#5	4'-0"	┌
v6(E)	12	#5	1'-4"	—
Concrete Sealer		Sq. Ft.	248	
Concrete Structures		Cu. Yd.	11.2	
Reinforcement Bars, Epoxy Coated		Pound	1510	

**PIER 1 DETAILS
STRUCTURE NO. 025-0001**

SHEET NO. 22 27 SHEETS	F.A.I. RTE. 57	SECTION (25-3HB)I-2	COUNTY EFFINGHAM	TOTAL SHEETS 1416	SHEET NO. 1376
	SN 025-0001		CONTRACT NO. 74296		
FED. ROAD DIST. NO. 7 ILLINOIS FED. AID PROJECT					

BERNARDIN LOCHMUELLER & ASSOCIATES, INC.
3 Oak Drive
Maryville, IL 62452-5655
Local (618) 288-4665
Fax 618-288-4666

10:56:08 AM 3/18/2010 _X0250001-74296.dgn