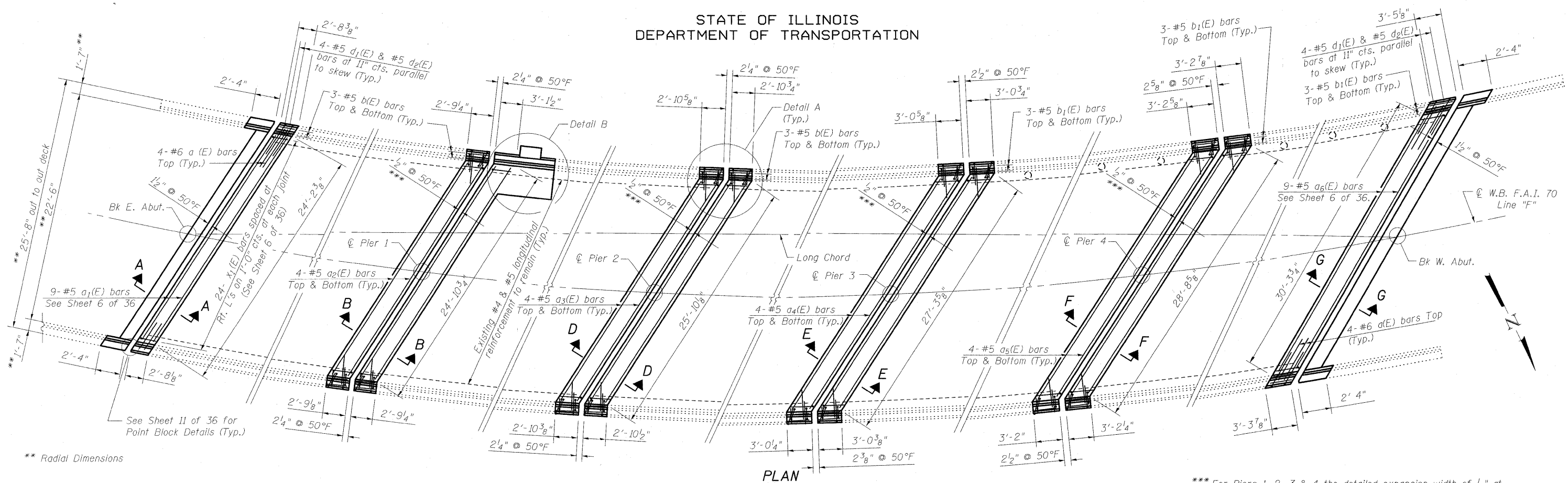
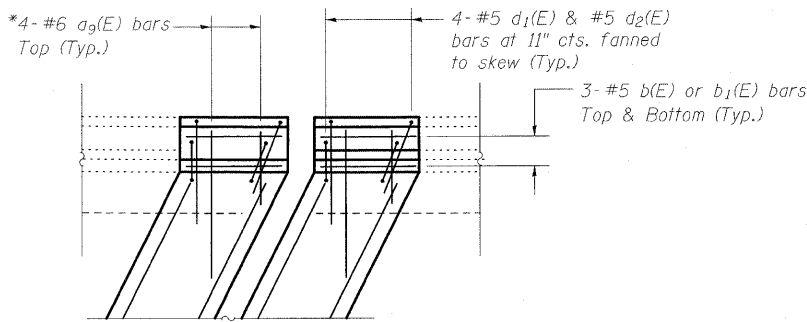


STATE OF ILLINOIS
DEPARTMENT OF TRANSPORTATION



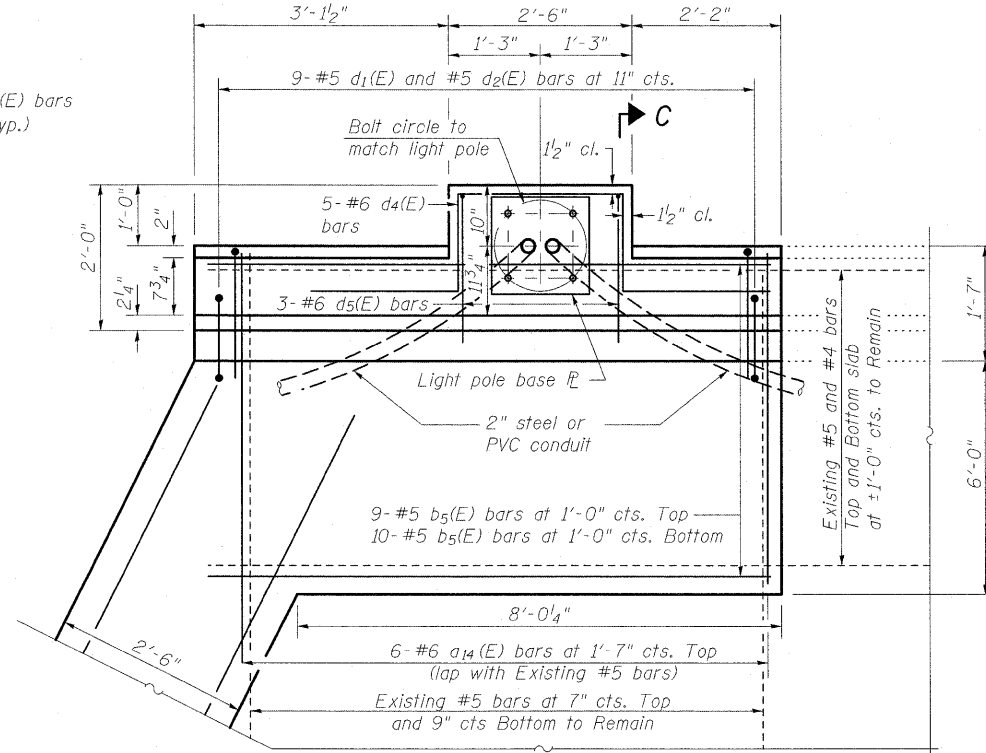
** Radial Dimensions



DETAIL A

(Typical Reinforcement at Parapet Joints, Piers 1, 2, 3 & 4)

* Order a₉(E) bars full length. Cut to fit skew and use remainder of bars on opposite end.



DETAIL B

Note:
Cost of anchor rods and conduit is included with Concrete Superstructure.

*** For Piers 1, 2, 3 & 4 the detailed expansion width of 1/2" at 50°F is not Standard. The existing field conditions may allow for an increase in expansion width. This increase in width shall be approved by the Engineer.

Notes:

Dimensions are based on a Rolled Rail Strip Seal Joint. If the Contractor elects to use the Welded Rail Strip Seal Joint, deck dimensions may require adjustments to satisfy the details on Sheet 11 of 36.

See Sheet 6 of 36 for Sections A-A, B-B, D-D, E-E, F-F and G-G.

See Sheet 7 of 36 for Section C-C.

x(E), a₇(E) and a₈(E) bars between beams at abutments not shown for clarity. See Sheet 6 of 36 for placement.

| | |
|----------|---------------|
| DESIGNED | B.B. |
| CHECKED | C.J.F. |
| DRAWN | W.J.S. |
| CHECKED | C.J.F. & B.B. |



**BERNARDIN
LOCHMUELLER &
ASSOCIATES, INC.**

3 Oak Drive
Maryville, IL 62002-0600
Local (618) 328-4665
Fax 618-288-4666

**SUPERSTRUCTURE
STRUCTURE NO. 025-0018**

| | | | | | |
|---|-------------|-------------|--------------------|--------------|-----------|
| SHEET NO. 5 36 SHEETS | F.A.I. RTE. | SECTION | COUNTY | TOTAL SHEETS | SHEET NO. |
| | 57 | (25-3HB)I-3 | EFFINGHAM | 1416 | 1386 |
| SN 025-0018 | | | CONTRACT NO. 74296 | | |
| FED. ROAD DIST. NO. 7 ILLINOIS FED. AID PROJECT | | | | | |