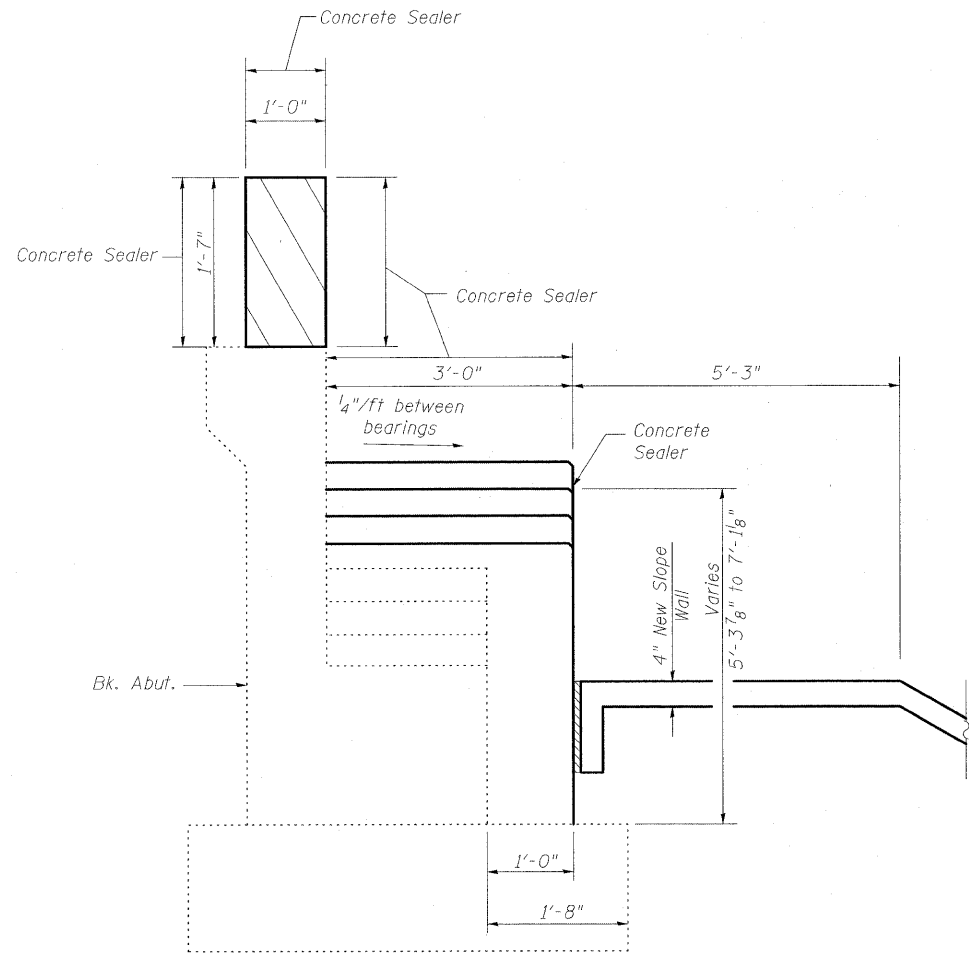
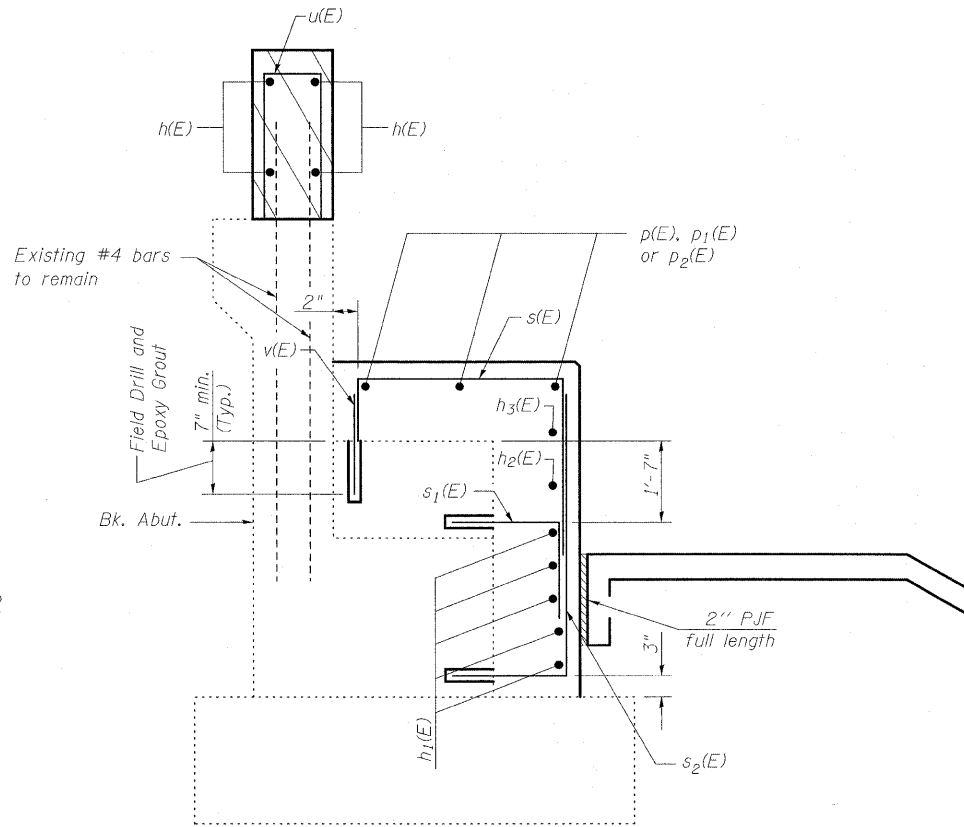


STATE OF ILLINOIS
DEPARTMENT OF TRANSPORTATION

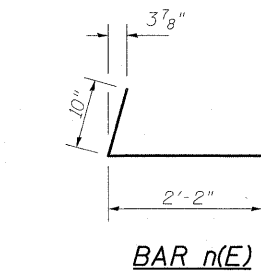


Dimensions at Rt L

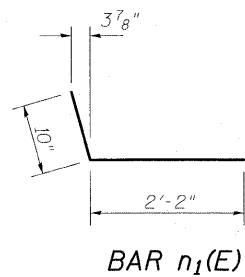
**SECTION A-A
THRU ABUTMENT
SHOWING OUTLINE**



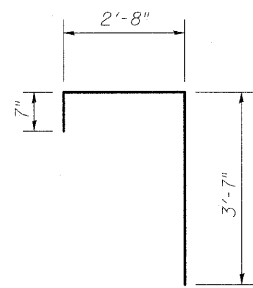
**SECTION A-A
THRU ABUTMENT
SHOWING REINFORCEMENT**



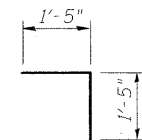
BAR n(E)



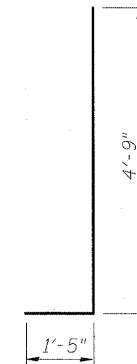
BAR n1(E)



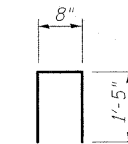
BAR s(E)



BAR s1(E)



BARS s2(E)



BAR u(E)

Notes:
For Endpost details see Sheet 7 of 36.
Hatched area quantity of concrete included with Concrete Superstructure.
Bars shall be drilled and grouted according to Section 584 of the Standard Specifications.
Apply Concrete Sealer to exposed horizontal and vertical faces of abutment extension.

**BILL OF MATERIAL
EAST ABUTMENT**

Bar	No.	Size	Length	Shape
h(E)	4	#6	23'-10"	—
h1(E)	5	#5	26'-10"	—
h2(E)	1	#5	21'-6"	—
h3(E)	1	#5	14'-3"	—
n(E)	6	#5	3'-0"	↘
n1(E)	8	#5	3'-0"	↙
p(E)	3	#5	6'-10"	—
p1(E)	6	#5	6'-11"	—
p2(E)	3	#5	6'-3"	—
s(E)	31	#5	6'-10"	┌
s1(E)	30	#5	2'-10"	└
s2(E)	30	#5	6'-2"	└
u(E)	25	#5	3'-6"	┌
v(E)	31	#5	1'-2"	—
Concrete Sealer			Sq. Ft.	431.0
Concrete Structures			Cu. Yd.	9.3
Reinforcement Bars, Epoxy Coated			Pound	1080

**EAST ABUTMENT SECTIONS
STRUCTURE NO. 025-0018**

DESIGNED	B.B.
CHECKED	C.J.F.
DRAWN	W.J.S.
CHECKED	C.J.F. & B.B.



**BERNARDIN
LOCHMUELLER &
ASSOCIATES, INC.**

8 Oak Drive
Mareville, IL 62662-5635
Local (618) 268-4665
Fax 618-268-4666

SHEET NO. 19 36 SHEETS	F.A.I. RTE.	SECTION	COUNTY	TOTAL SHEETS	SHEET NO.
	57	(25-3HB)I-3	EFFINGHAM	1416	1400
SN 025-0018			CONTRACT NO. 74296		
FED. ROAD DIST. NO. 7 ILLINOIS FED. AID PROJECT					