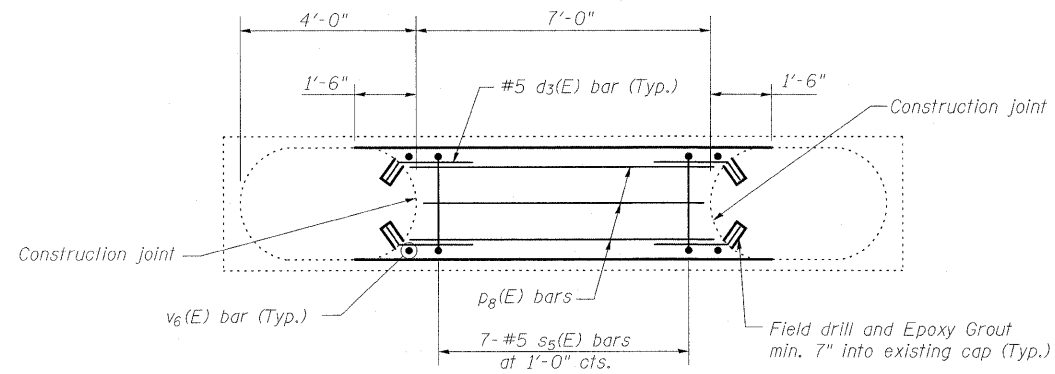
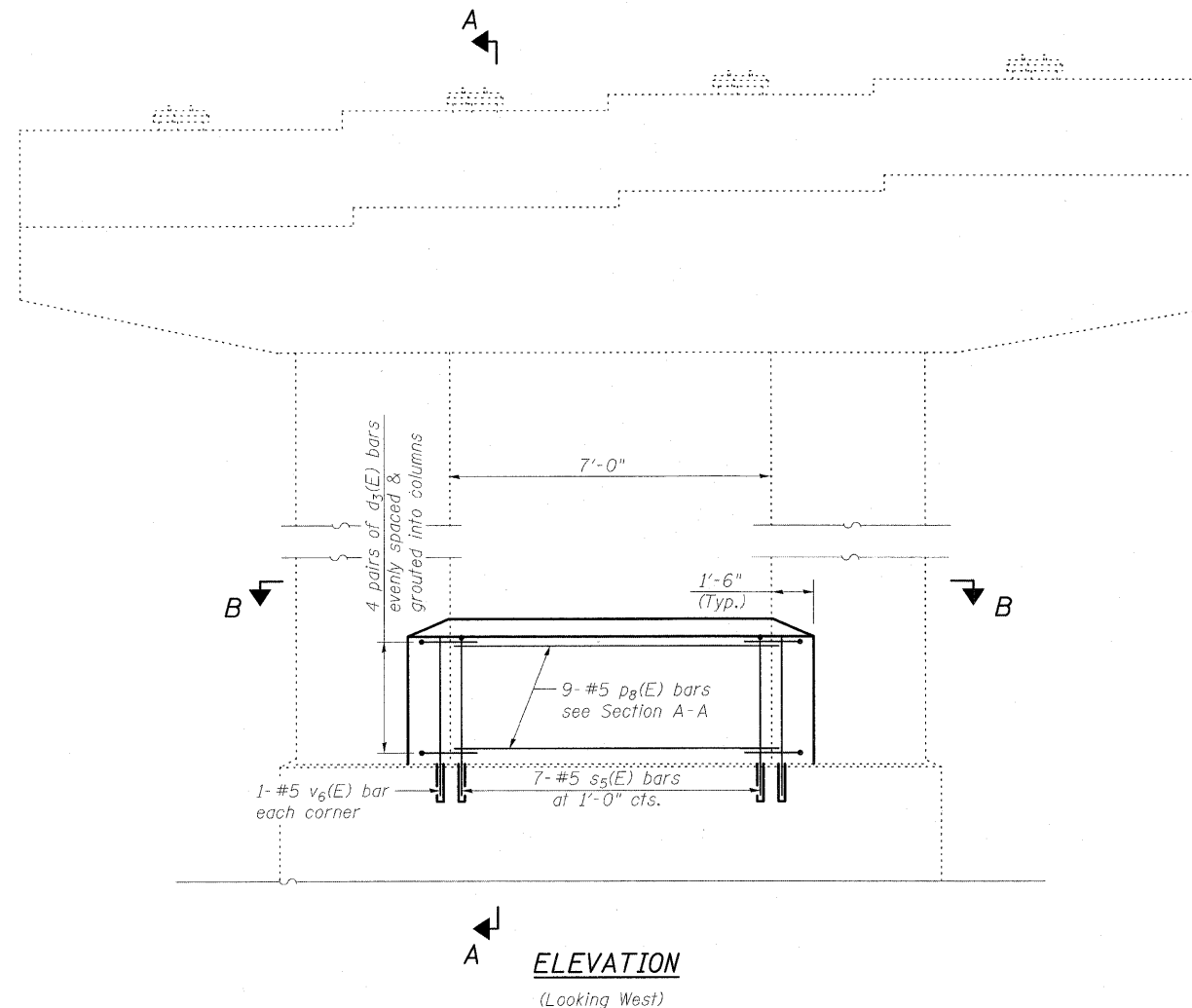


STATE OF ILLINOIS
DEPARTMENT OF TRANSPORTATION

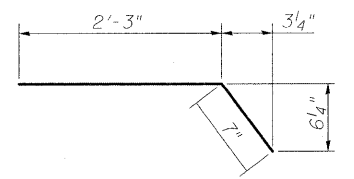


VIEW B-B
CRASHWALL PLAN - PIER 2

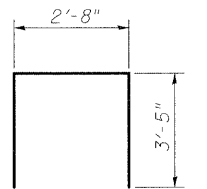


ELEVATION
(Looking West)

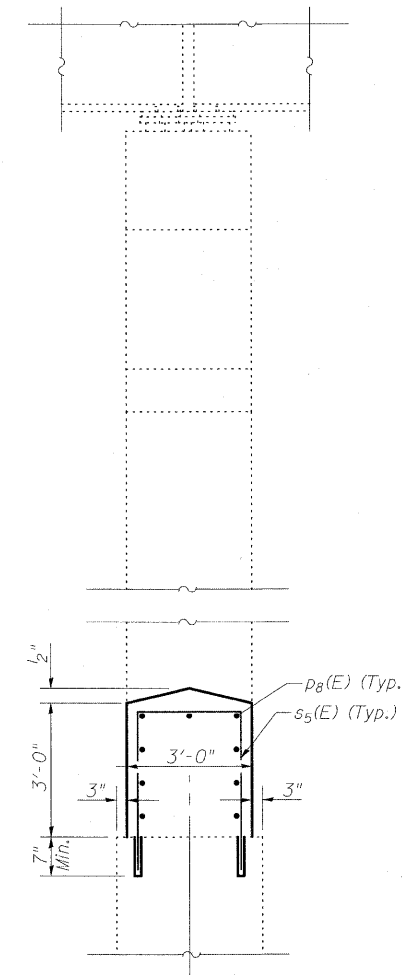
Notes:
Bars shall be drilled and grouted according to Section 584 of the Standard Specifications.
Concrete Sealer shall be applied only to exposed surfaces of the new concrete on Pier 2.



BAR d3(E)



BAR s5(E)



SECTION A-A
(Showing Bearings and Superstructure)

BILL OF MATERIAL
PIER 2

| Bar | No. | Size | Length | Shape |
|----------------------------------|-----|---------|--------|-------|
| d ₃ (E) | 16 | #5 | 2'-10" | ┌ |
| p ₈ (E) | 9 | #5 | 6'-8" | — |
| s ₅ (E) | 7 | #5 | 9'-6" | ┌ |
| v ₆ (E) | 4 | #5 | 3'-5" | — |
| Concrete Sealer | | Sq. Ft. | 83 | |
| Concrete Structures | | Cu. Yd. | 2.5 | |
| Reinforcement Bars, Epoxy Coated | | Pound | 200 | |

PIER 2 GENERAL PLAN
AND DETAILS
STRUCTURE NO. 025-0018

| | |
|----------|---------------|
| DESIGNED | B.B. |
| CHECKED | C.J.F. |
| DRAWN | W.J.S. |
| CHECKED | C.J.F. & B.B. |



BERNARDIN
LOCHMUELLER &
ASSOCIATES, INC.

3 Oak Drive
Maryville, IL 62062-5635
Local (618) 288-4665
Fax 618-288-4666

| | | | | | |
|---|-------------|--------------------|-----------|--------------|-----------|
| SHEET NO. 26 36 SHEETS | F.A.I. RTE. | SECTION | COUNTY | TOTAL SHEETS | SHEET NO. |
| | 57 | (25-3HB)I-3 | EFFINGHAM | 1416 | 1407 |
| SN 025-0018 | | CONTRACT NO. 74296 | | | |
| FED. ROAD DIST. NO. 7 ILLINOIS FED. AID PROJECT | | | | | |