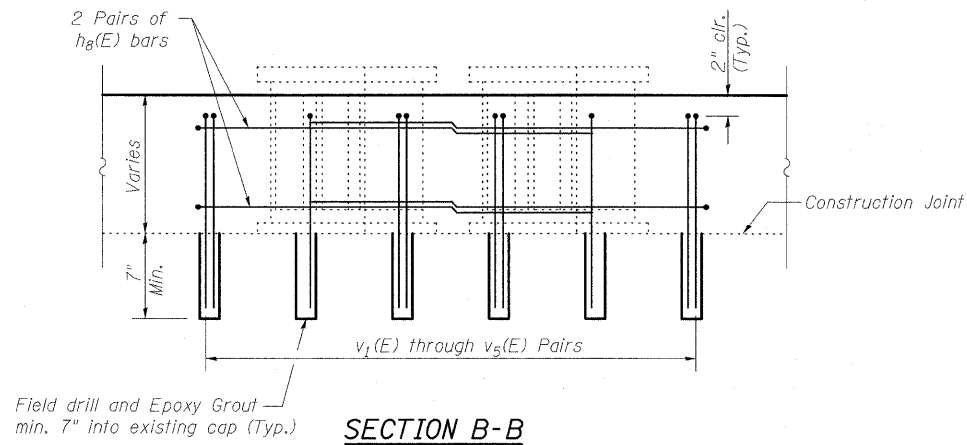
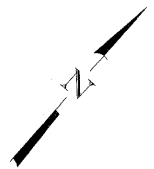
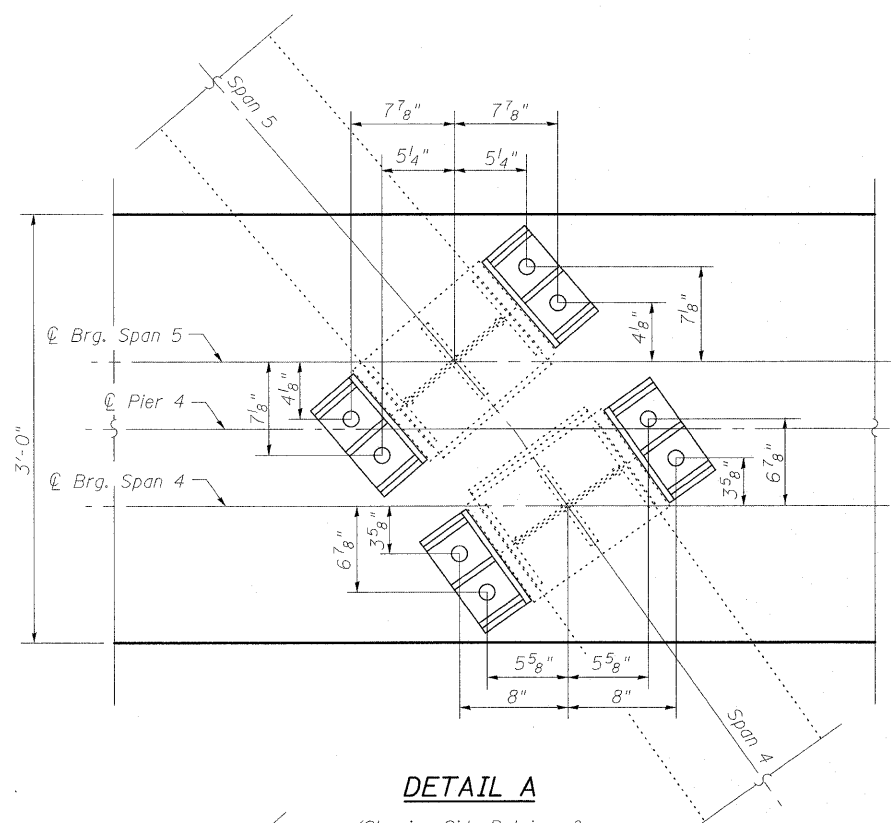
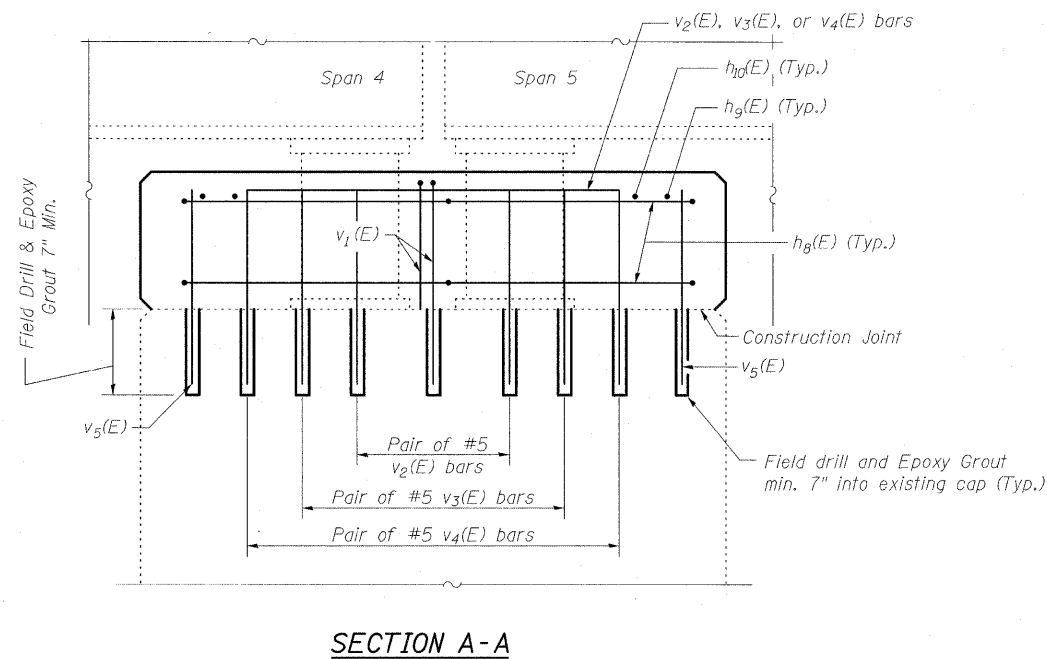
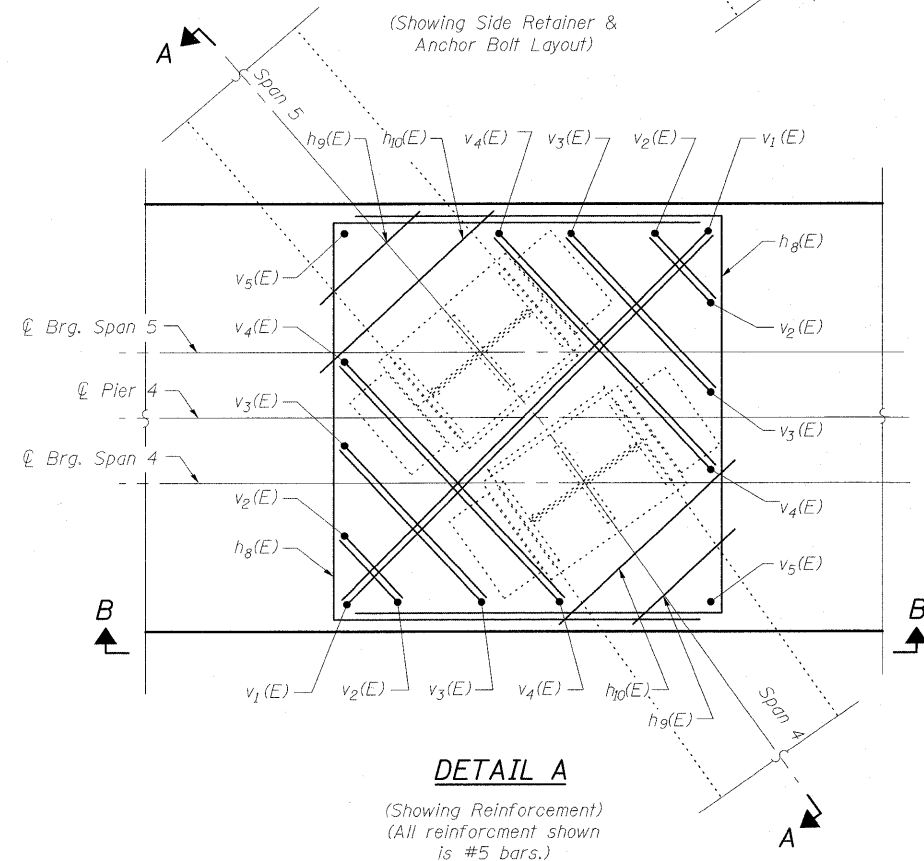


STATE OF ILLINOIS
DEPARTMENT OF TRANSPORTATION



Notes:
See Sheet 24 of 36 for
Bar Bend Details.



(All $v(E)$ bars shown are drilled and grouted)
Side Retainers not shown for clarity.

BILL OF MATERIAL
PIER 4

Bar	No.	Size	Length	Shape
$h_8(E)$	16	#5	8'-10"	□
$h_9(E)$	8	#5	0'-6"	—
$h_{10}(E)$	8	#5	1'-6"	—
$p_4(E)$	4	#5	8'-5"	—
$p_9(E)$	4	#5	6'-2"	—
$p_{10}(E)$	12	#5	2'-7"	—
$s_4(E)$	40	#5	4'-0"	└
$v_1(E)$	8	#5	4'-7"	└
$v_2(E)$	16	#5	2'-0"	└
$v_3(E)$	16	#5	3'-0"	└
$v_4(E)$	16	#5	4'-0"	└
$v_5(E)$	8	#5	1'-4"	—
Concrete Sealer		Sq. Ft.	160	
Concrete Structures		Cu. Yd.	3.1	
Reinforcement Bars, Epoxy Coated		Pound	630	

PIER 4 DETAILS
STRUCTURE NO. 025-0018

DESIGNED	B.B.
CHECKED	C.J.F.
DRAWN	W.J.S.
CHECKED	C.J.F. & B.B.



BERNARDIN
LOCHMUELLER &
ASSOCIATES, INC.

3 Oak Drive
Maryville, IL 62052-9635
Local (618) 288-4665
Fax 618-288-4666

SHEET NO. 31 36 SHEETS	F.A.I. RTE. 57	SECTION (25-3HB)I-3	COUNTY EFFINGHAM	TOTAL SHEETS 1416	SHEET NO. 1412
	SN 025-0018		CONTRACT NO. 74296		
FED. ROAD DIST. NO. 7 ILLINOIS FED. AID PROJECT					