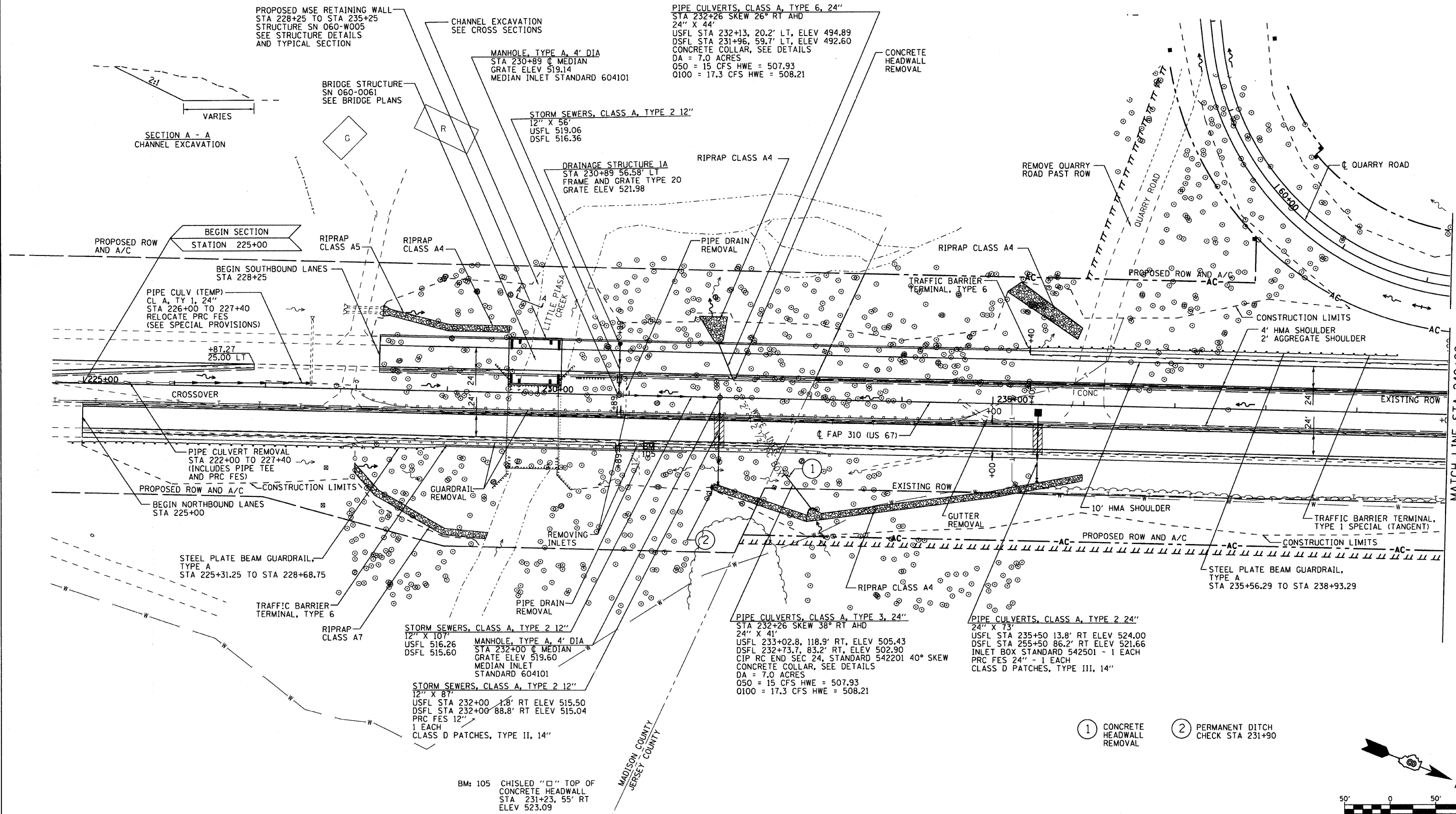
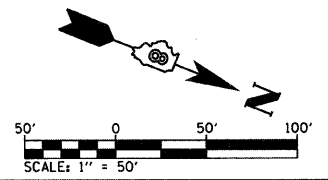


DATE	BY	SURVEYED	ALIGNED	CHECKED	DESIGNED
PLAN		NOTE BOOK			
		NO. _____			
		CADD FILE NAME			



MATCH LINE STA 240+00

- ① CONCRETE HEADWALL REMOVAL
- ② PERMANENT DITCH CHECK STA 231+90



BM: 105 CHISLED "□" TOP OF CONCRETE HEADWALL STA 231+23, 55' RT ELEV 523.09

MADISON COUNTY  
JERSEY COUNTY

ILLINOIS DEPARTMENT OF TRANSPORTATION

**ROADWAY PLAN STA 225+00 TO 240+00**

FAP ROUTE 310  
SECTION 60-16-1&1B,42-1&1B  
MADISON/JERSEY COUNTY

DRAWN BY: EMR                      CHECKED BY: GLF

REVISIONS	
NAME	DATE