

FAP ROUTE	SECTION	COUNTY	TOTAL SHEETS	SHEET NO.
310	60-16-1&1B,42-1&1B	MADISON/JERSEY	481	56
STA.	TO STA.			
EXISTING CONDITIONS:				

CONTRACT NO. 76318

DATE	
BY	
PLAN	
NO. _____	
REVISIONS	
NO.	
DATE	
BY	
PLAN	
NO.	

CIP CONCRETE BOX CULVERT 6' X 7'
 STA 268+54 SKEW 32° LT AHD
 6' X 7' X 136'
 USFL STA 268+70.35, 22.8' LT, ELEV 499.90
 DSFL STA 269+50.20, 133.4' LT, ELEV 498.68
 CONCRETE COLLARS, SEE DETAILS
 BOX CULVERT END SECTIONS CULVERT NO. 2 - 1 EACH
 DA = 162.1 ACRES
 O50 = 239.3 CFS, HWE = 508.16
 O100 = 274.5 CFS, HWE = 508.77

PR CURVE P1.102
 PI STA 271+78.01
 $\Delta = 12^{\circ} 06' 26''$ (LT)
 $D = 0^{\circ} 49' 07''$
 $T = 742.36'$
 $R = 7,000.00'$
 $L = 1,479.19'$
 $E = 39.25'$
 $e = .03$
 $TR IN = 45'$
 $SE RUN IN = 262+93.48$ TO $265+06.74$
 $SE RUN OUT = 278+43.76$ TO $281+57.01$
 $TR OUT = 45'$
 $PC STA 264+35.65$
 $PT STA 279+14.84$

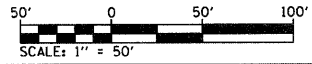
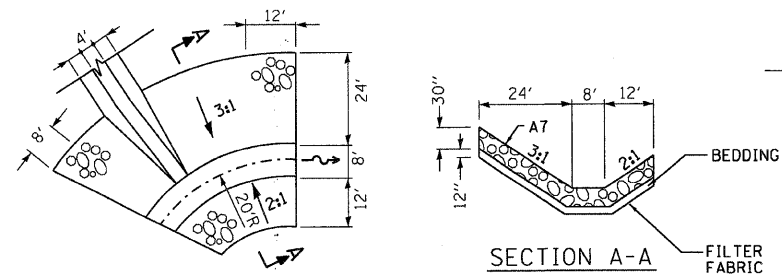
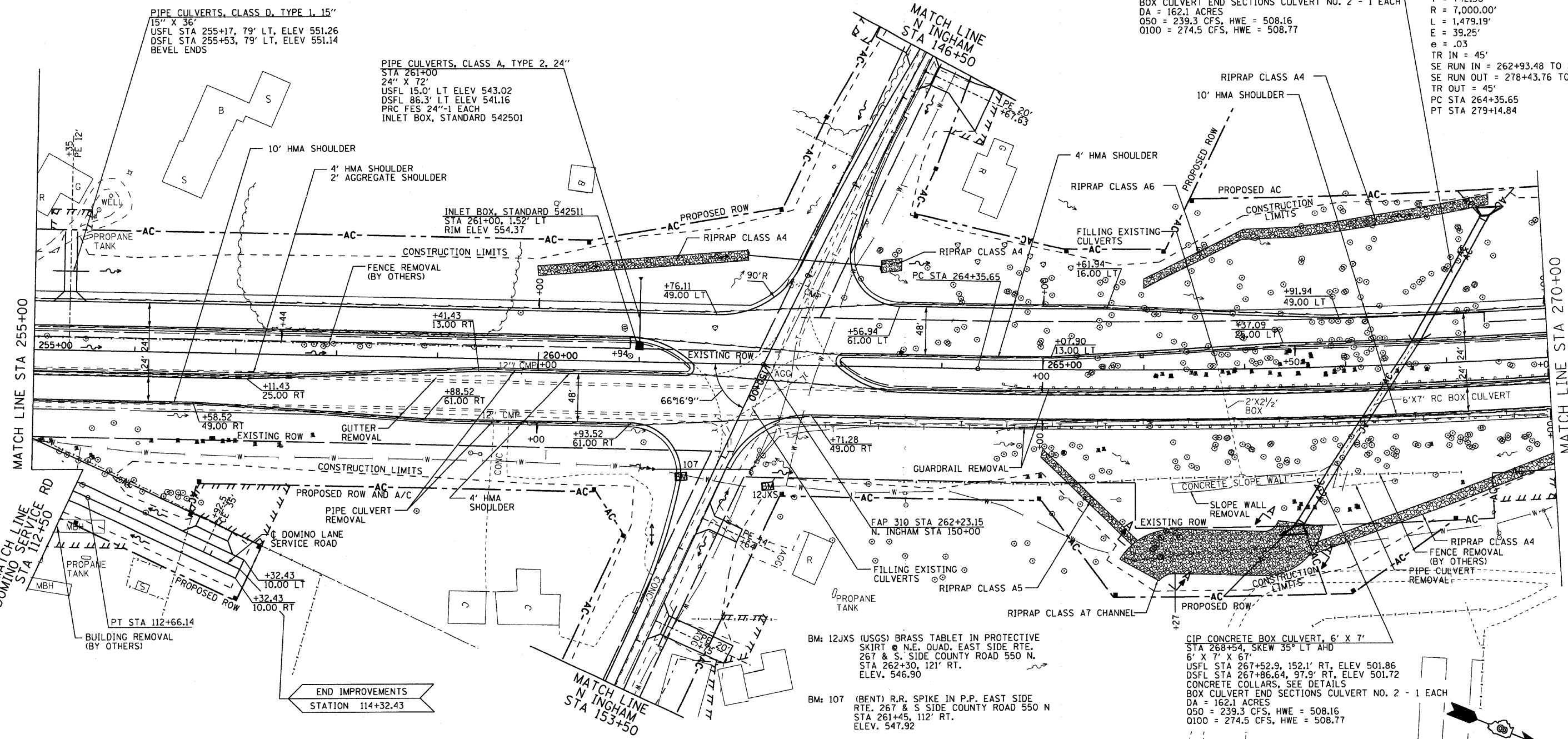
PIPE CULVERTS, CLASS D, TYPE 1, 15"
 15" X 36"
 USFL STA 255+17, 79' LT, ELEV 551.26
 DSFL STA 255+53, 79' LT, ELEV 551.14
 BEVEL ENDS

PIPE CULVERTS, CLASS A, TYPE 2, 24"
 STA 261+00
 24" X 72"
 USFL 15.0' LT ELEV 543.02
 DSFL 86.3' LT ELEV 541.16
 PRC FES 24"-1 EACH
 INLET BOX, STANDARD 542501

INLET BOX, STANDARD 542511
 STA 261+00, 1.52' LT
 RIM ELEV 554.37

BM: 12JXS (USGS) BRASS TABLET IN PROTECTIVE SKIRT @ N.E. QUAD, EAST SIDE RTE. 267 & S. SIDE COUNTY ROAD 550 N. STA 262+30, 121' RT. ELEV. 546.90
 BM: 107 (BENT) R.R. SPIKE IN P.P. EAST SIDE RTE. 267 & S. SIDE COUNTY ROAD 550 N. STA 261+45, 112' RT. ELEV. 547.92

CIP CONCRETE BOX CULVERT, 6' X 7'
 STA 268+54, SKEW 35° LT AHD
 6' X 7' X 67'
 USFL STA 267+52.9, 152.1' RT, ELEV 501.86
 DSFL STA 267+86.64, 97.9' RT, ELEV 501.72
 CONCRETE COLLARS, SEE DETAILS
 BOX CULVERT END SECTIONS CULVERT NO. 2 - 1 EACH
 DA = 162.1 ACRES
 O50 = 239.3 CFS, HWE = 508.16
 O100 = 274.5 CFS, HWE = 508.77



ILLINOIS DEPARTMENT OF TRANSPORTATION
ROADWAY PLAN STA 255+00 TO 270+00
 FAP ROUTE 310
 SECTION 60-16-1&1B,42-1&1B
 MADISON/JERSEY COUNTY
 DRAWN BY: EMR
 CHECKED BY: GLF

REVISIONS	
NAME	DATE