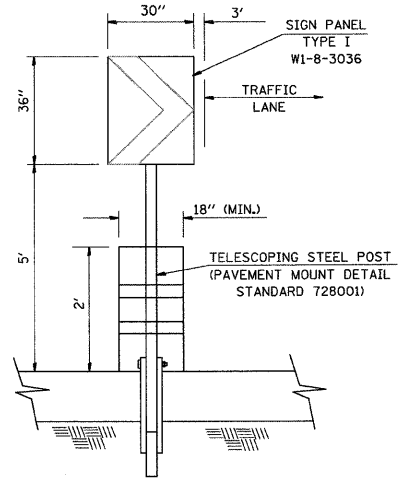
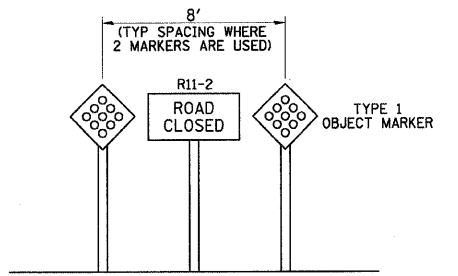
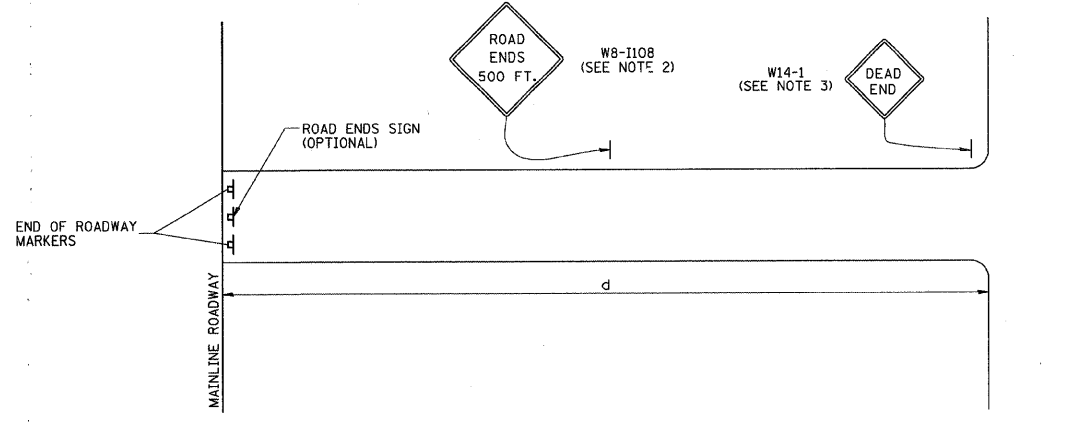


CONTRACT NO. 76318



DRUM AND CHEVRON SIGN DETAIL



LOW-VOLUME ROAD CLOSURE

NOTES:

1. THE MARKERS FOR THE END OF THE ROADWAY SHALL CONFORM WITH SECTION 3C-4 OF THE MUTCD. THE MARKERS AND SIGN SHOULD BE PLACED AT A MOUNTING HEIGHT OF 4 FT MIN.
2. THE "ROAD ENDS 500 FT" SIGN (W8-I108) SHOULD BE USED WHERE "d" EXCEEDS 1500 FT OR WHERE SIGHT DISTANCE TO THE CLOSURE IS LESS THAN 500 FT.
3. THE "DEAD END" SIGN (W14-1) SHOULD BE USED IN ALL CASES EXCEPT WHERE THE CLOSURE POINT IS VISIBLE FROM THE CROSSROAD.

Hutchison Engineering Inc.
 Since 1945
 Jacksonville * Shorewood

REVISIONS	
NAME	DATE

ILLINOIS DEPARTMENT OF TRANSPORTATION
 TRAFFIC CONTROL DETAILS
 FAP ROUTE 310
 SECTION 60-16-1&1B, 42-1&1B
 MADISON AND JERSEY COUNTIES

SCALE: VERT. DRAWN BY TJD
 HORIZ. CHECKED BY
 DATE FEBRUARY 25, 2010