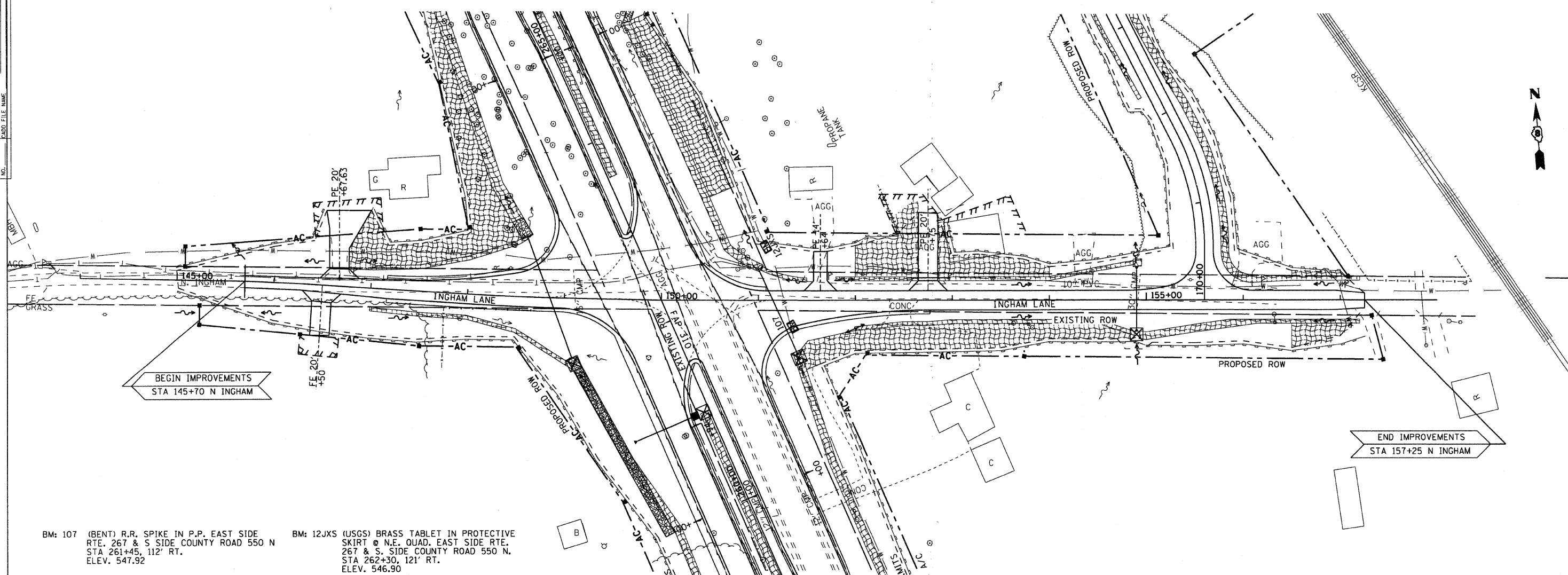


FAP ROUTE	SECTION	COUNTY	TOTAL SHEETS	SHEET NO.
310	60-16-1&1B,42-1&1B	MADISON AND JERSEY	481	96
STA. 138+00 TO STA. 150+00		EXISTING CONDITIONS:		

CONTRACT NO. 76318

PLAN	DATE
SURVEYED	
BY	
NOTE BOOK	
NO.	
NO. OF PAGES	
NO. OF SHEETS	
NO. OF FIGURES	
NO. OF PLANS	
NO. OF SECTIONS	
NO. OF DETAILS	
NO. OF ELEVATIONS	
NO. OF PROFILES	
NO. OF CROSS SECTIONS	
NO. OF LONG SECTIONS	
NO. OF SHORT SECTIONS	
NO. OF VERTICAL CURVES	
NO. OF GRADES	
NO. OF SLOPES	
NO. OF EROSION CONTROL	
NO. OF SEDIMENT CONTROL	
NO. OF PERIMETER BARRIERS	
NO. OF EROSION CONTROL BLANKETS	
NO. OF FLOW LINES	
NO. OF INLET AND PIPE PROTECTION	
NO. OF PERMANENT EARTH BERM DITCH CHECKS	
NO. OF RIPRAP	



BEGIN IMPROVEMENTS  
STA 145+70 N INGHAM

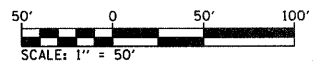
END IMPROVEMENTS  
STA 157+25 N INGHAM

BM: 107 (BENT) R.R. SPIKE IN P.P. EAST SIDE  
RTE. 267 & S SIDE COUNTY ROAD 550 N  
STA 261+45, 112' RT.  
ELEV. 547.92

BM: 12JXS (USGS) BRASS TABLET IN PROTECTIVE  
SKIRT @ N.E. QUAD. EAST SIDE RTE.  
267 & S. SIDE COUNTY ROAD 550 N.  
STA 262+30, 121' RT.  
ELEV. 546.90

**EROSION AND SEDIMENT CONTROL  
STANDARD SYMBOLS**

- PERIMETER EROSION BARRIER - SILT FILTER FENCE OR OTHER AS APPROVED BY THE ENGINEER
- EROSION CONTROL BLANKET
- FLOW LINES
- INLET AND PIPE PROTECTION - STRAW BALES, FILTER FABRIC, AGGREGATES
- PERMANENT EARTH BERM DITCH CHECK
- RIPRAP



REVISIONS	
NAME	DATE

ILLINOIS DEPARTMENT OF TRANSPORTATION  
**EROSION CONTROL PLAN  
NORTH INGHAM**  
FAP ROUTE 310  
SECTION 60-16-1&1B,42-1&1B  
MADISON/JERSEY COUNTY  
DRAWN BY: EMR  
CHECKED BY: GLF