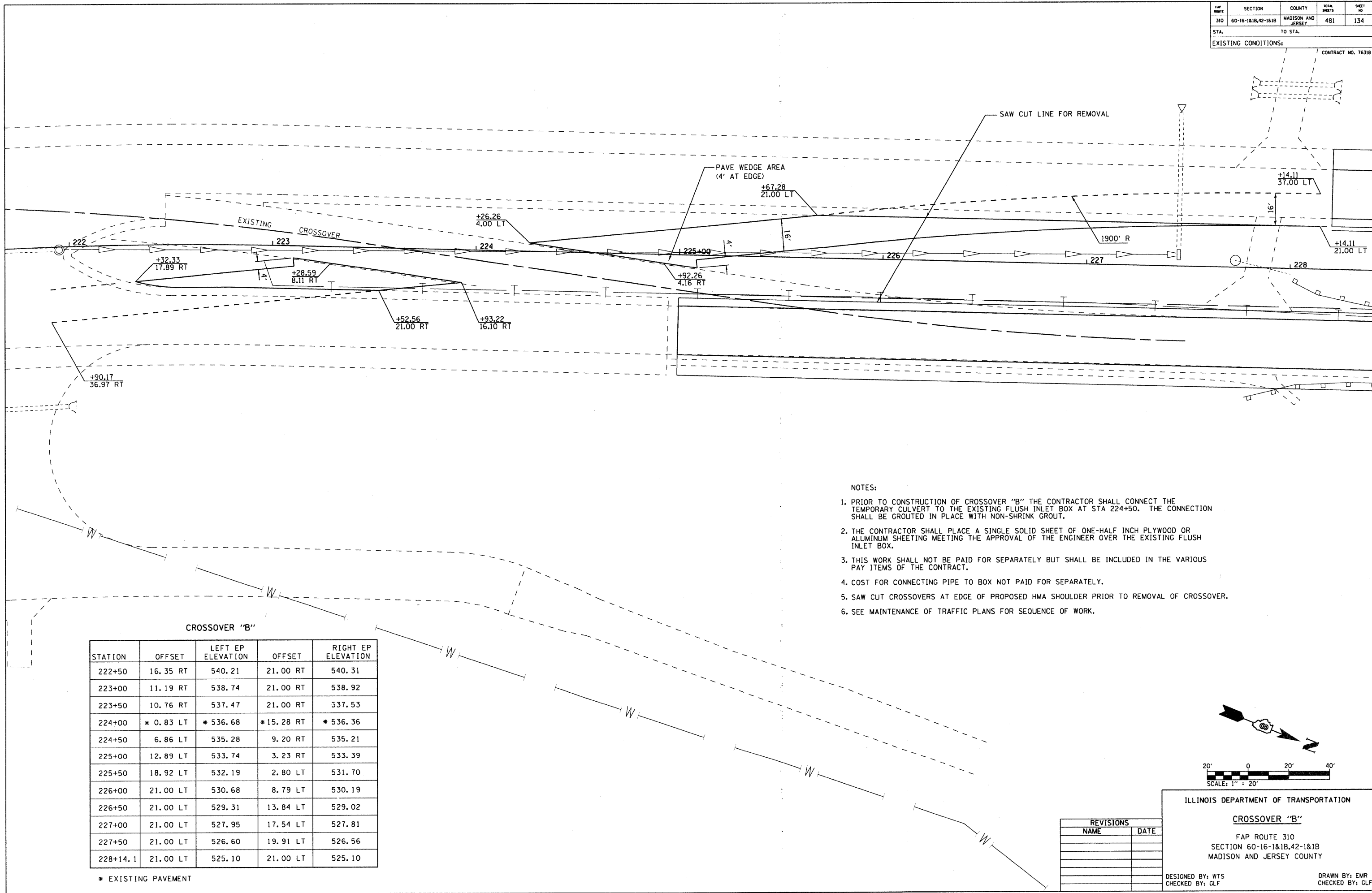


FAP ROUTE	SECTION	COUNTY	TOTAL SHEETS	SHEET NO.
310	60-16-1&1B,42-1&1B	MADISON AND JERSEY	481	134
STA. TO STA.		EXISTING CONDITIONS:		

CONTRACT NO. 76318

PLAN	SUBMITTED	DATE
NOTE BOOK NO.	PLOTTED	
	CHECKED	
	BY	
	FILE NAME	

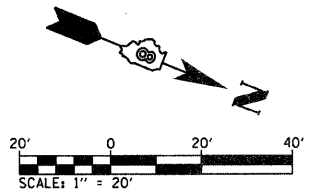


- NOTES:
1. PRIOR TO CONSTRUCTION OF CROSSOVER "B" THE CONTRACTOR SHALL CONNECT THE TEMPORARY CULVERT TO THE EXISTING FLUSH INLET BOX AT STA 224+50. THE CONNECTION SHALL BE GROUTED IN PLACE WITH NON-SHRINK GROUT.
 2. THE CONTRACTOR SHALL PLACE A SINGLE SOLID SHEET OF ONE-HALF INCH PLYWOOD OR ALUMINUM SHEETING MEETING THE APPROVAL OF THE ENGINEER OVER THE EXISTING FLUSH INLET BOX.
 3. THIS WORK SHALL NOT BE PAID FOR SEPARATELY BUT SHALL BE INCLUDED IN THE VARIOUS PAY ITEMS OF THE CONTRACT.
 4. COST FOR CONNECTING PIPE TO BOX NOT PAID FOR SEPARATELY.
 5. SAW CUT CROSSOVERS AT EDGE OF PROPOSED HMA SHOULDER PRIOR TO REMOVAL OF CROSSOVER.
 6. SEE MAINTENANCE OF TRAFFIC PLANS FOR SEQUENCE OF WORK.

CROSSOVER "B"

STATION	OFFSET	LEFT EP ELEVATION	OFFSET	RIGHT EP ELEVATION
222+50	16.35 RT	540.21	21.00 RT	540.31
223+00	11.19 RT	538.74	21.00 RT	538.92
223+50	10.76 RT	537.47	21.00 RT	537.53
224+00	* 0.83 LT	* 536.68	* 15.28 RT	* 536.36
224+50	6.86 LT	535.28	9.20 RT	535.21
225+00	12.89 LT	533.74	3.23 RT	533.39
225+50	18.92 LT	532.19	2.80 LT	531.70
226+00	21.00 LT	530.68	8.79 LT	530.19
226+50	21.00 LT	529.31	13.84 LT	529.02
227+00	21.00 LT	527.95	17.54 LT	527.81
227+50	21.00 LT	526.60	19.91 LT	526.56
228+14.1	21.00 LT	525.10	21.00 LT	525.10

* EXISTING PAVEMENT



REVISIONS	
NAME	DATE

ILLINOIS DEPARTMENT OF TRANSPORTATION
CROSSOVER "B"
 FAP ROUTE 310
 SECTION 60-16-1&1B,42-1&1B
 MADISON AND JERSEY COUNTY
 DESIGNED BY: WTS
 CHECKED BY: GLF
 DRAWN BY: EMR
 CHECKED BY: GLF