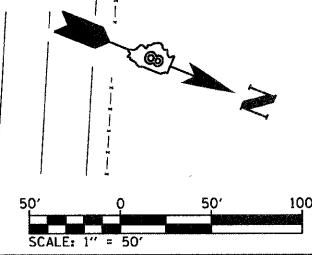
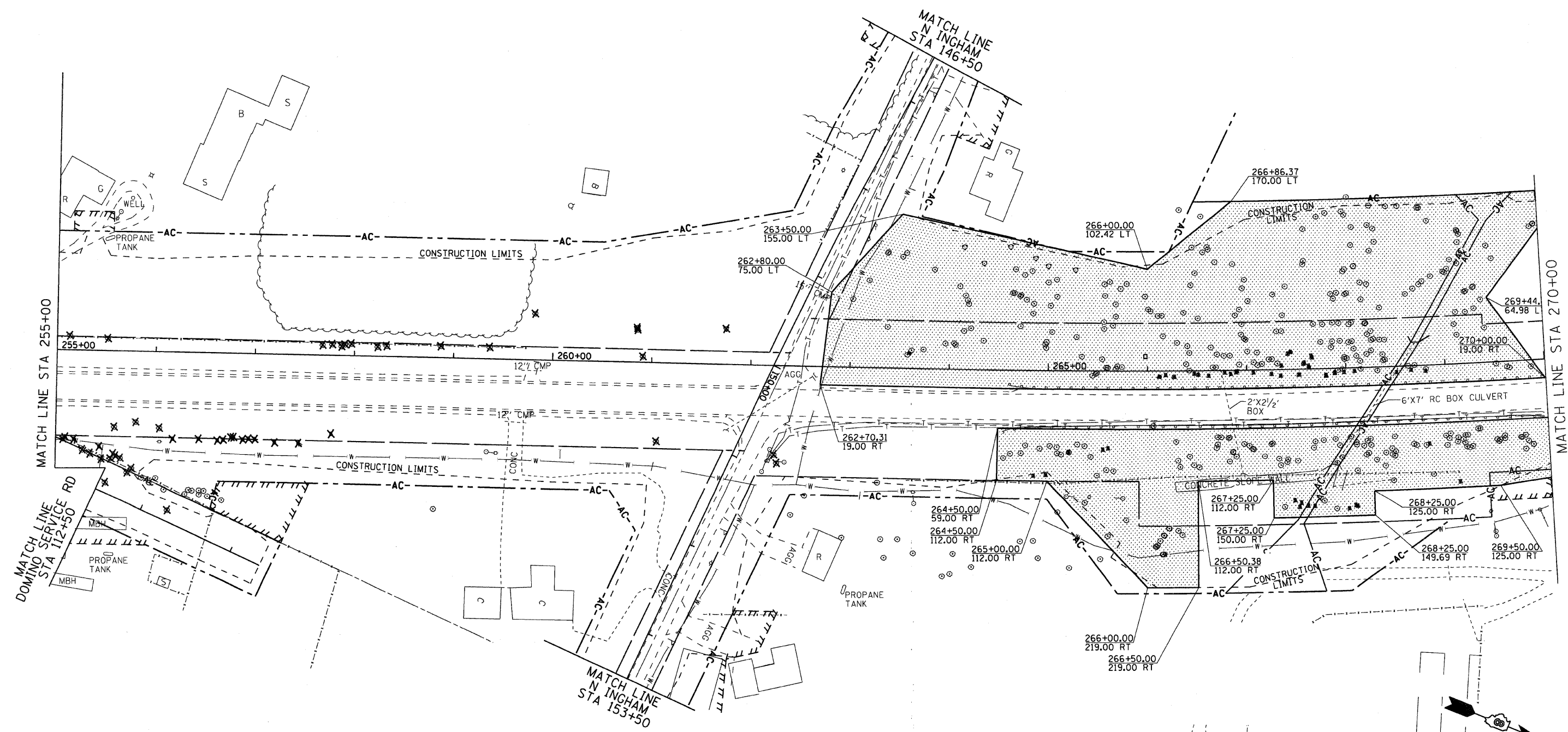


FAP ROUTE	SECTION	COUNTY	TOTAL SHEETS	SHEET NO.
310	60-16-1&1B,42-1&1B	MADISON/JERSEY	481	144
STA.	TO STA.			
EXISTING CONDITIONS:				

CONTRACT NO. 76318

PLAN	DATE
SURVEYED	
ALIGNED	
CHECKED	
BY	
NO.	



- TREE REMOVAL, ACRES
- X TREE REMOVAL (EACH)

REVISIONS	
NAME	DATE

ILLINOIS DEPARTMENT OF TRANSPORTATION
TREE REMOVAL STA 255+00 TO 270+00
 FAP ROUTE 310
 SECTION 60-16-1&1B,42-1&1B
 MADISON/JERSEY COUNTY
 DRAWN BY: EMR CHECKED BY: GLF