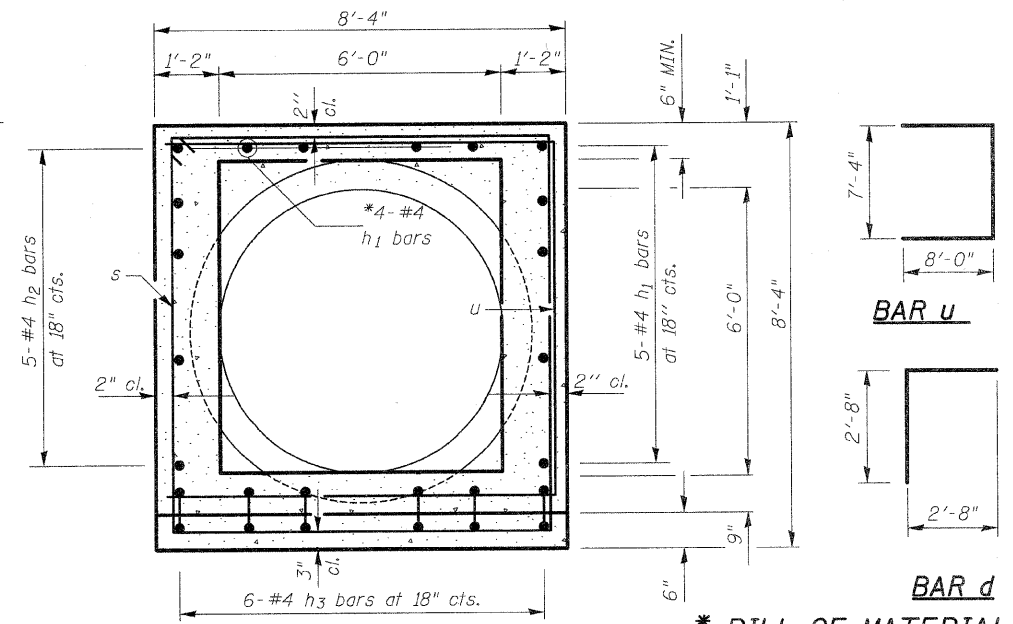


\*\* Order b<sub>1</sub> bars full length. Cut in field and use remainder of bars at other end section.



SECTION A-A

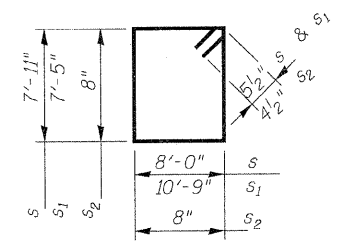
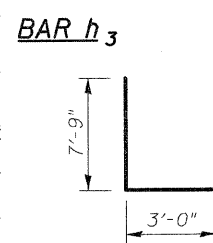
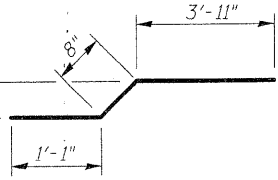
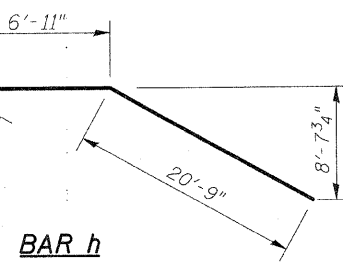
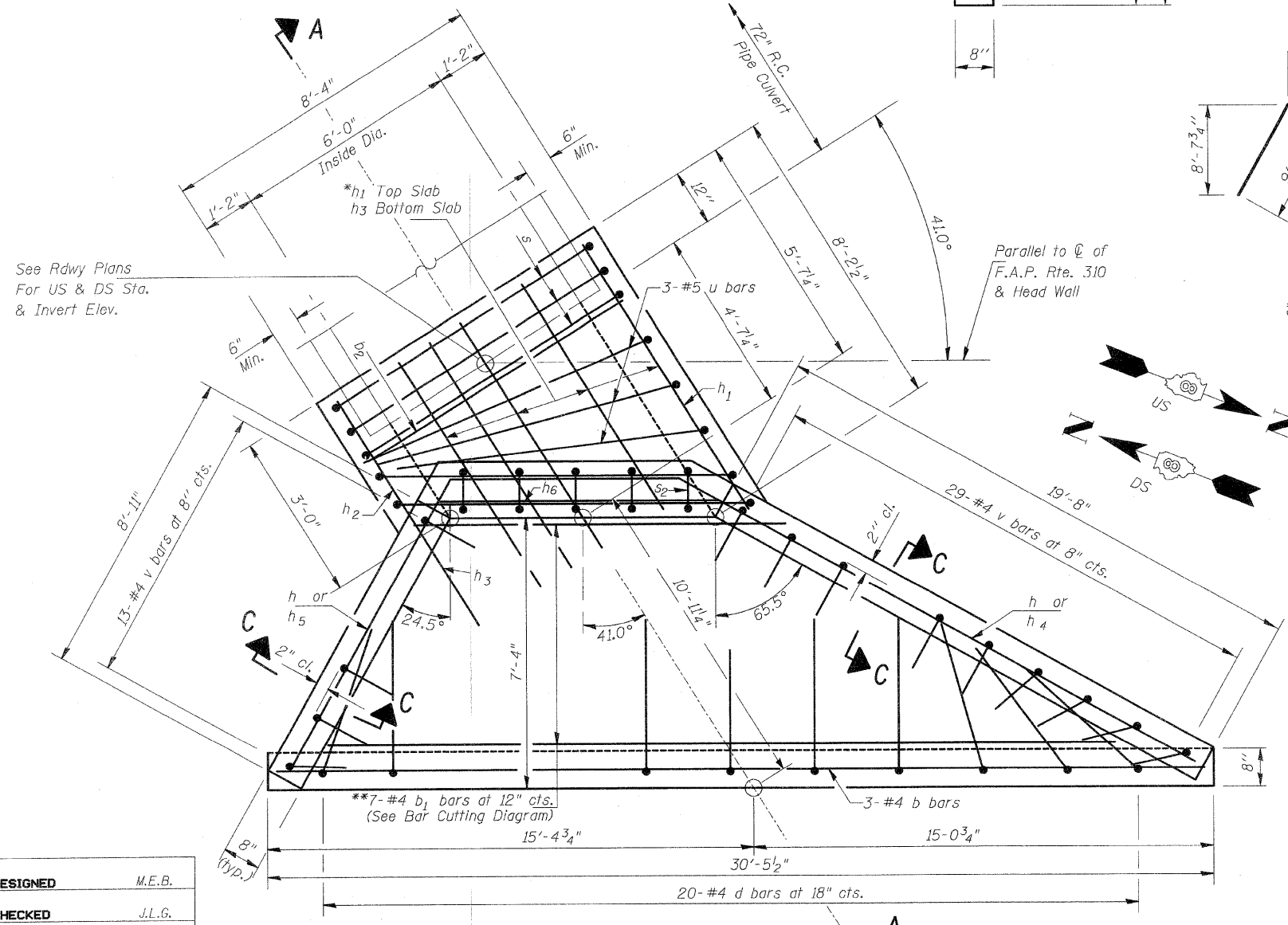
SECTION C-C

SECTION B-B

\* BILL OF MATERIAL

Bar	No.	Size	Length	Shape
b	6	#4	30'-1"	—
b <sub>1</sub>	7	#4	40'-2"	—
b <sub>2</sub>	2	#5	7'-10"	—
d	40	#4	5'-4"	└
h	2	#6	37'-2"	—
h <sub>1</sub>	18	#4	9'-0"	—
h <sub>2</sub>	10	#4	2'-7"	—
h <sub>3</sub>	12	#4	5'-8"	—
h <sub>4</sub>	6	#4	19'-4"	—
h <sub>5</sub>	6	#4	8'-7"	—
h <sub>6</sub>	2	#6	7'-11"	—
s	6	#5	31'-10"	□
s <sub>1</sub>	4	#5	36'-4"	□
s <sub>2</sub>	16	#4	3'-5"	□
u	6	#5	23'-4"	□
v	84	#4	10'-9"	└

See Rdwy Plans  
For US & DS Sta.  
& Invert Elev.



**DESIGN SPECIFICATIONS**  
2007 AASHTO LRFD Bridge Design  
Specifications with 2008 & 2009 Interims

**LOADING HL-93**

Allow 50#/sq. ft. for future wearing surface.

**DESIGN STRESSES**

**FIELD UNITS**

f'c = 3,500 psi  
fy = 60,000 psi (Reinf.)

**GENERAL NOTES**

Reinforcement bars shall conform to the requirements of ASTM A 706 Grade 60. All exposed edges shall be chamfered 3/4".

All construction joints shall be bonded.

Plan dimensions and details relative to existing structures have been taken from existing plans and are subject to nominal construction variations. It shall be the Contractor's responsibility to verify such dimensions and details in the field and make necessary approved adjustments prior to ordering materials. Such variations shall not be cause for additional compensation for a change in the scope of the work, however, the Contractor will be paid for the quantity actually furnished at the unit price bid for the work.

**72" R.C. PIPE CULVERT  
CAST IN PLACE END SECTIONS  
F.A.P. RTE. 310 (U.S. RTE. 67)  
SECTION 60-16-1 & 1B, 42-1 & 1B  
MADISON/JERSEY COUNTY  
STATION 326+68.00**

DESIGNED	M.E.B.
CHECKED	J.L.G.
DRAWN	M.E.B.
CHECKED	J.L.G.

CONTRACT NO. 76568

PLAN

**HR**  
HURST-ROSCHKE  
ENGINEERS, INC.  
601 NORTH BRUNS LANE  
SPRINGFIELD, IL 62702  
(217)-787-1199  
FAX (217)-793-1199