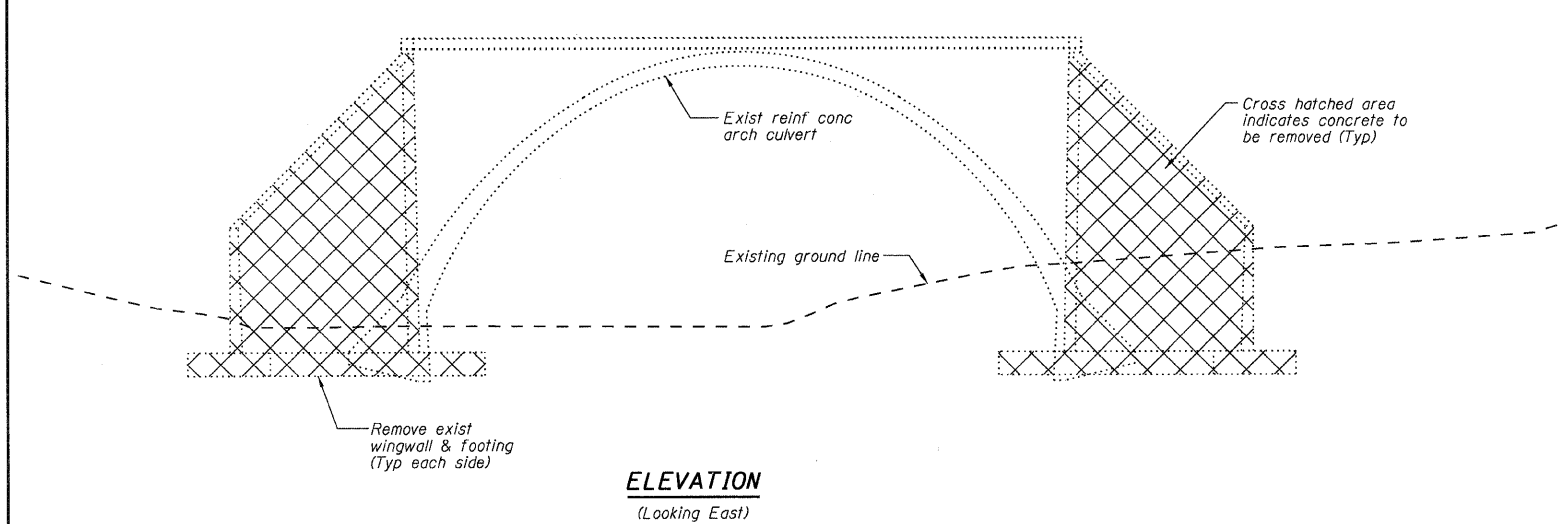
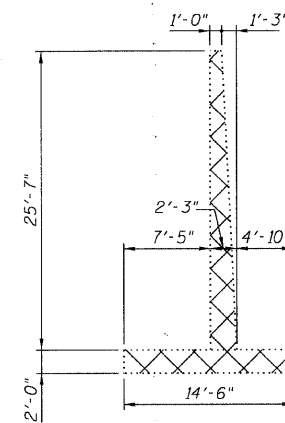


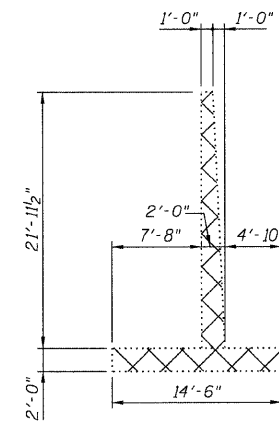
STATE OF ILLINOIS
DEPARTMENT OF TRANSPORTATION



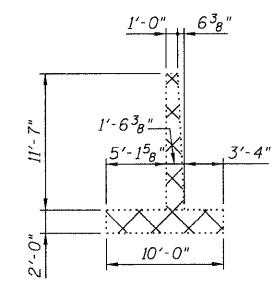
ELEVATION
(Looking East)



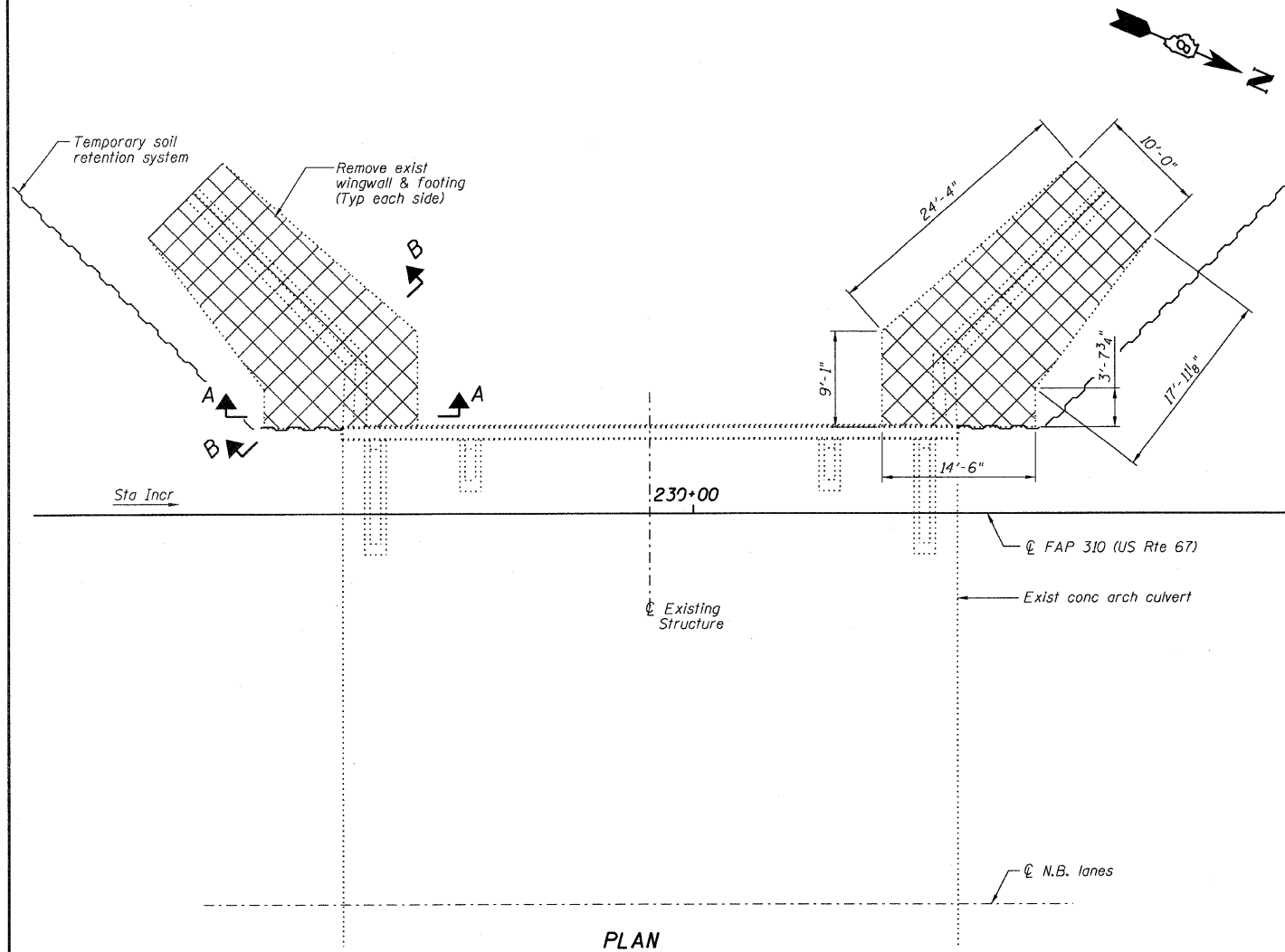
SECTION A-A



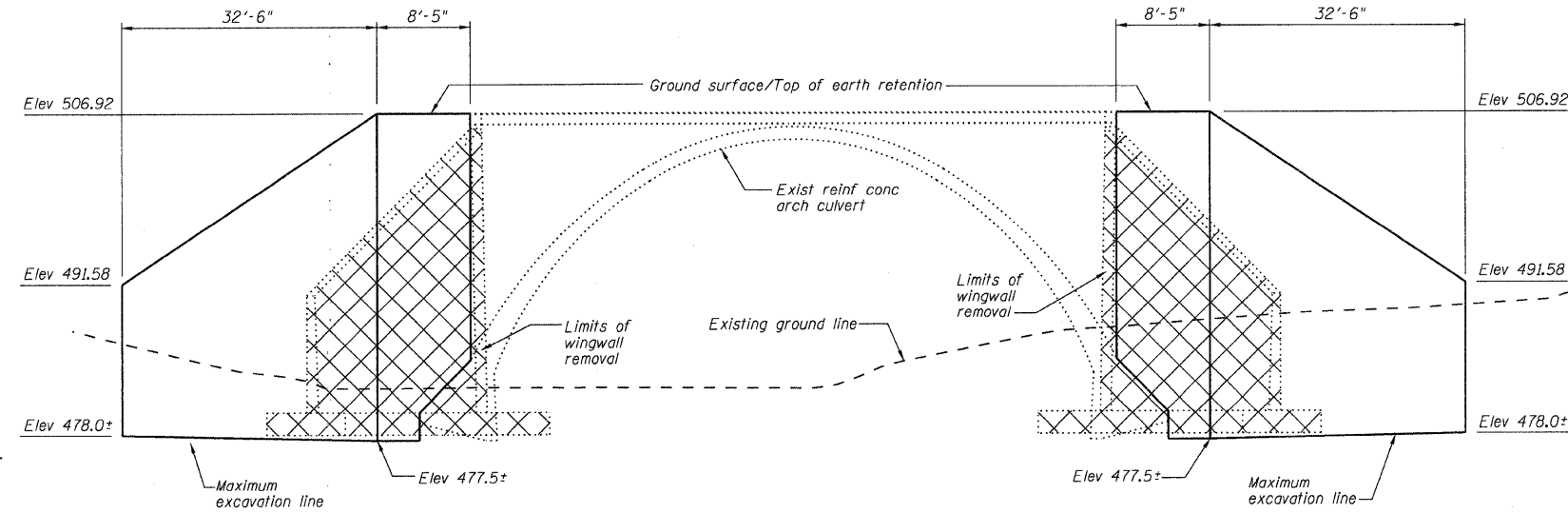
SECTION B-B



END VIEW OF WING



PLAN



A cantilevered sheet piling design does not appear feasible and additional members or other retention systems may be necessary. The Contractor shall submit a temporary soil retention system design including plan details and calculations for review and acceptance by the Engineer.

TEMPORARY SOIL RETENTION SYSTEM
(Looking East)

ARCH CONCRETE REMOVAL DETAILS
FAP ROUTE 310 (US 67)
OVER LITTLE PIASA CREEK
SECTION 60-16-1-1B
MADISON COUNTY
STATION 229+95.92
STRUCTURE NUMBER 060-0061

DESIGNED -	BWP
CHECKED -	CWC
DRAWN -	R KING
CHECKED -	CWC

HOMER L. CHASTAIN & ASSOCIATES, LLP
CONSULTING ENGINEERS
DECATUR (217) 422-8544
CHICAGO (773) 714-0050
ROCKFORD (815) 489-0050
184-001397

SHEET NO. 2 OF 12 SHEETS	F.A.P. RTE.	SECTION	COUNTY	TOTAL SHEETS	SHEET NO.
	310	60-16-1-1B	MADISON	481	166
FAP ROUTE 310 (US 67)			CONTRACT NO. 76318		
FED. ROAD DIST. NO. ILLINOIS FED. AID PROJECT					