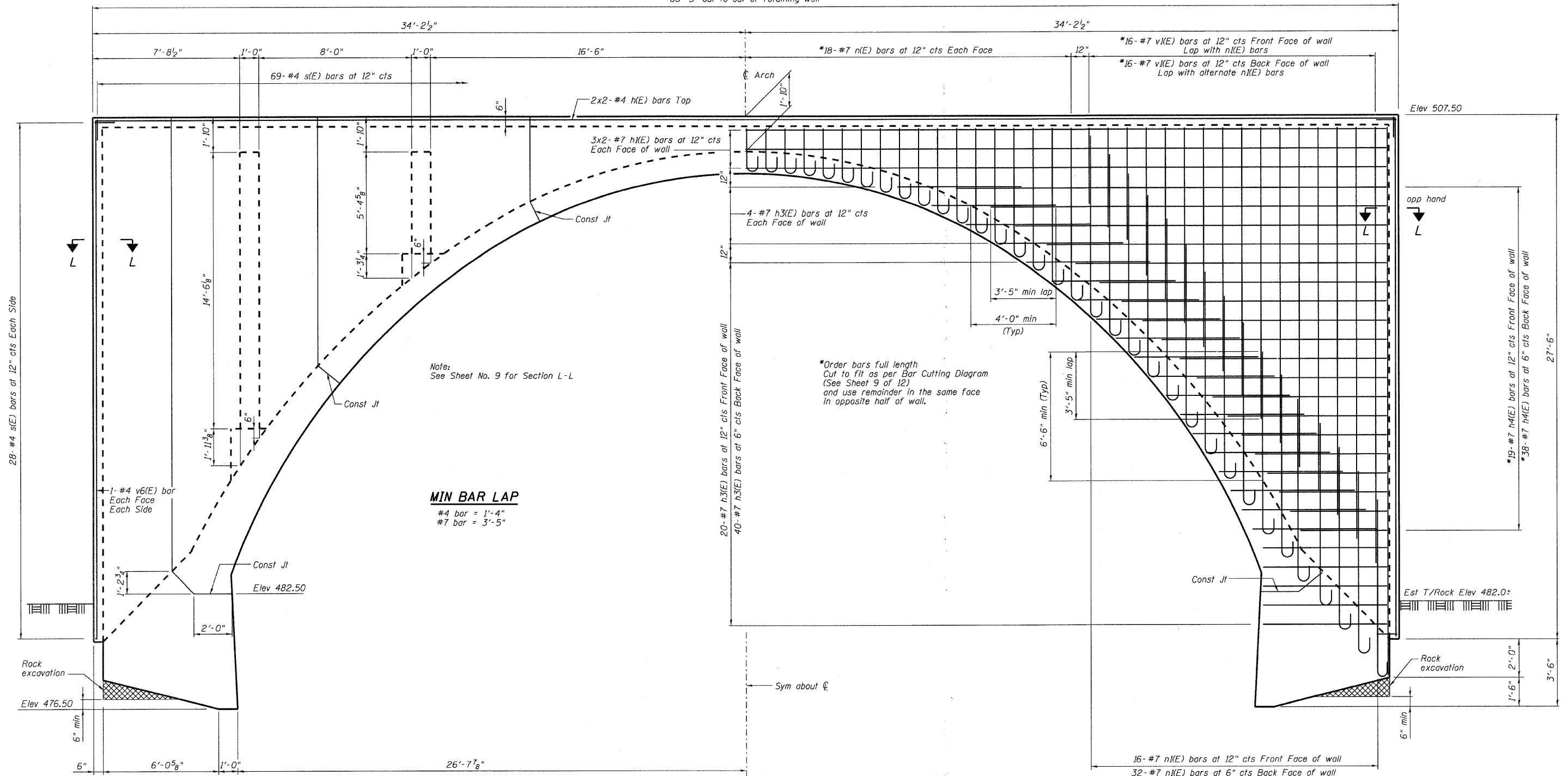


STATE OF ILLINOIS
DEPARTMENT OF TRANSPORTATION
68'-5" out to out of retaining wall



HALF ELEVATION LOOKING WEST

HALF ELEVATION LOOKING WEST

SECTION A-A

CONCRETE ARCH DETAILS
FAP ROUTE 310 (US 67)
OVER LITTLE PIASA CREEK
SECTION 60-16-1-1B
MADISON COUNTY
STATION 229+95.92
STRUCTURE NUMBER 060-0061

DESIGNED	BWP
CHECKED	CWC
DRAWN	R KING
CHECKED	CWC

HOMER L. CHASTAIN & ASSOCIATES, LLP
CONSULTING ENGINEERS
DECATUR (217) 422-8544
CHICAGO (773) 714-0050
ROCKFORD (815) 489-0050
184-001397

SHEET NO. 6 OF 12 SHEETS	F.A.P. RTE. 310	SECTION 60-16-1-1B	COUNTY MADISON	TOTAL SHEETS 481	SHEET NO. 170
	FAP ROUTE 310 (US 67)		CONTRACT NO. 76318		
FED. ROAD DIST. NO.		ILLINOIS FED. AID PROJECT			